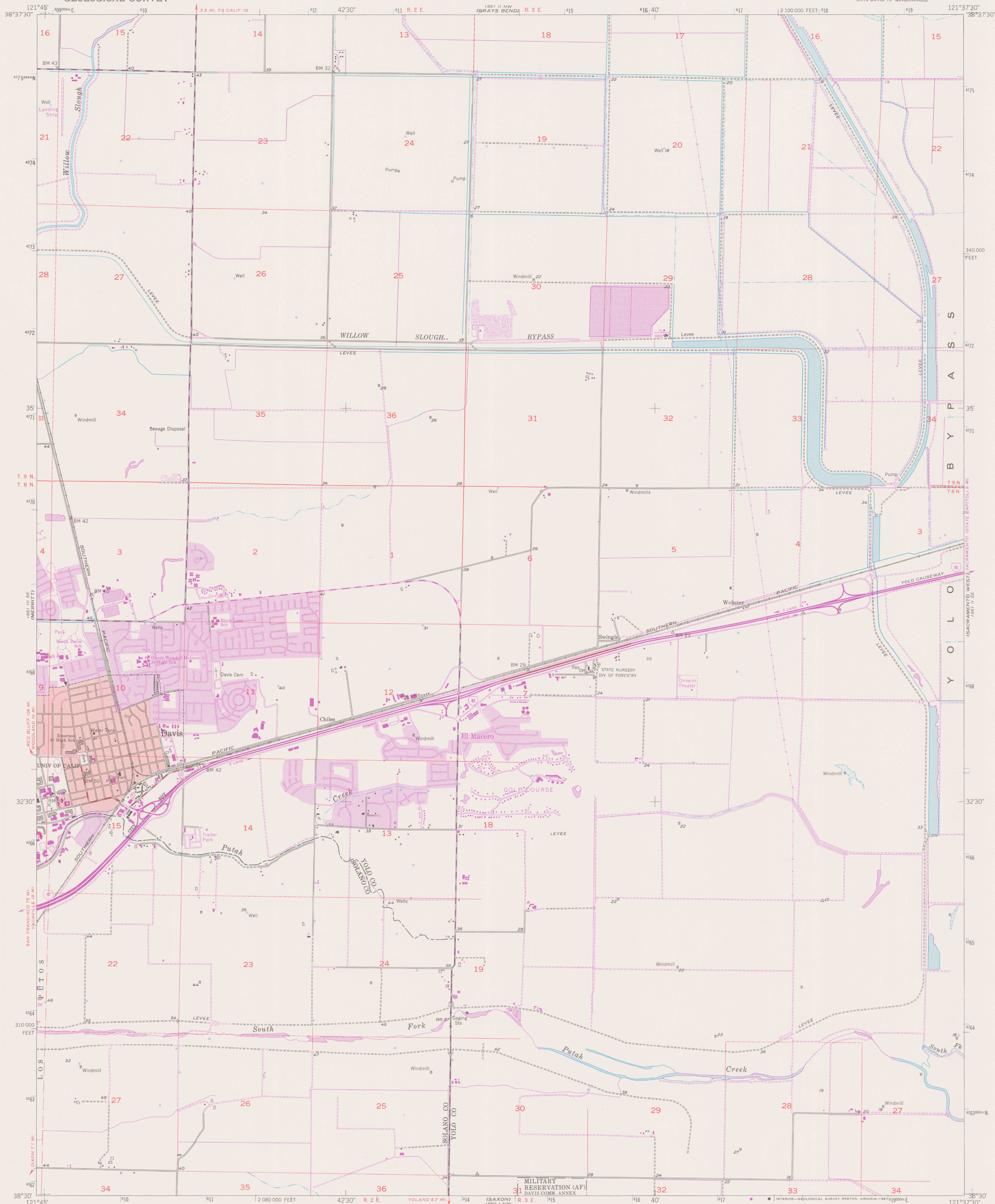


1661 II NE
WOODLAND

UNITED STATES
DEPARTMENT OF THE INTERIOR
GEOLOGICAL SURVEY

DAVIS QUADRANGLE
CALIFORNIA
7.5 MINUTE SERIES (TOPOGRAPHIC)
SW/4 DAVIS 15' QUADRANGLE

1661 II NE
TAYLOR MONUMENT



Mapped, edited, and published by the Geological Survey

Control by USGS and NOS/NOAA

Mapped 1905; remapped 1952

Culture and drainage from photo-mosaic by USBR

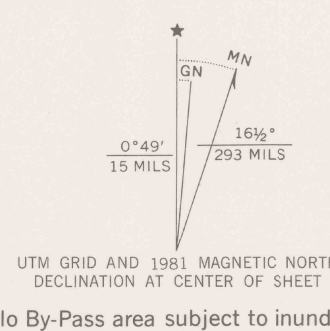
Aerial photographs taken 1949

Topography from planetable surveys by USGS 1952

Polyconic projection. 10,000-foot grid ticks based on California coordinate system, zone 2. 1000-meter Universal Transverse Mercator grid ticks, zone 10, shown in blue. 1927 North American Datum. To place on the predicted North American Datum 1983 move the projection lines 15 meters north and 93 meters east as shown by dashed corner ticks.

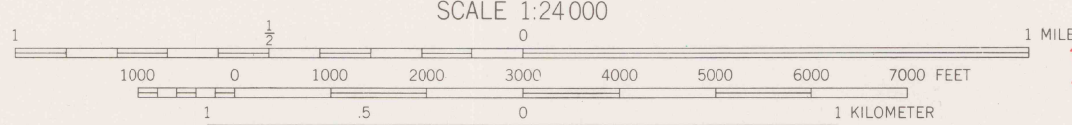
Red tint indicates areas in which only landmark buildings are shown

Dashed land lines indicate approximate locations



Yolo By-Pass area subject to inundation during periods of high water

Purple tint indicates extension of urban areas



CONTOUR INTERVAL 5 FEET
CONTOURS INCOMPLETE ALONG EMBANKMENTS AND DITCHES
NATIONAL GEODETIC VERTICAL DATUM OF 1929

THIS MAP COMPLIES WITH NATIONAL MAP ACCURACY STANDARDS
FOR SALE BY U. S. GEOLOGICAL SURVEY, DENVER, COLORADO 80225, OR RESTON, VIRGINIA 22092
A FOLDER DESCRIBING TOPOGRAPHIC MAPS AND SYMBOLS IS AVAILABLE ON REQUEST

DO NOT CIRCULATE

FOR EARLIEST
EDITION OF
THIS MAP SEE
3052.C4831.U5:
Swingle



QUADRANGLE LOCATION

There may be private inholdings within the boundaries of the National or State reservations shown on this map

Revisions shown in purple and woodland compiled from aerial photographs taken 1978 and other source data
This information not field checked. Map edited 1981

ROAD CLASSIFICATION	
Primary highway, all weather, hard surface	Light-duty road, all weather, improved surface
Secondary highway, all weather, hard surface	Unimproved road, fair or dry weather
Interstate Route	U. S. Route
	State Route

REFERENCE

DAVIS, CALIF.
SW/4 DAVIS 15' QUADRANGLE
N3830—W12137.5/7.5

1952
PHOTOREVISED 1981
DMA 1661 II SW-SERIES V805

REB
3700m
Van
U5
7.5
-d. 19 81 PP