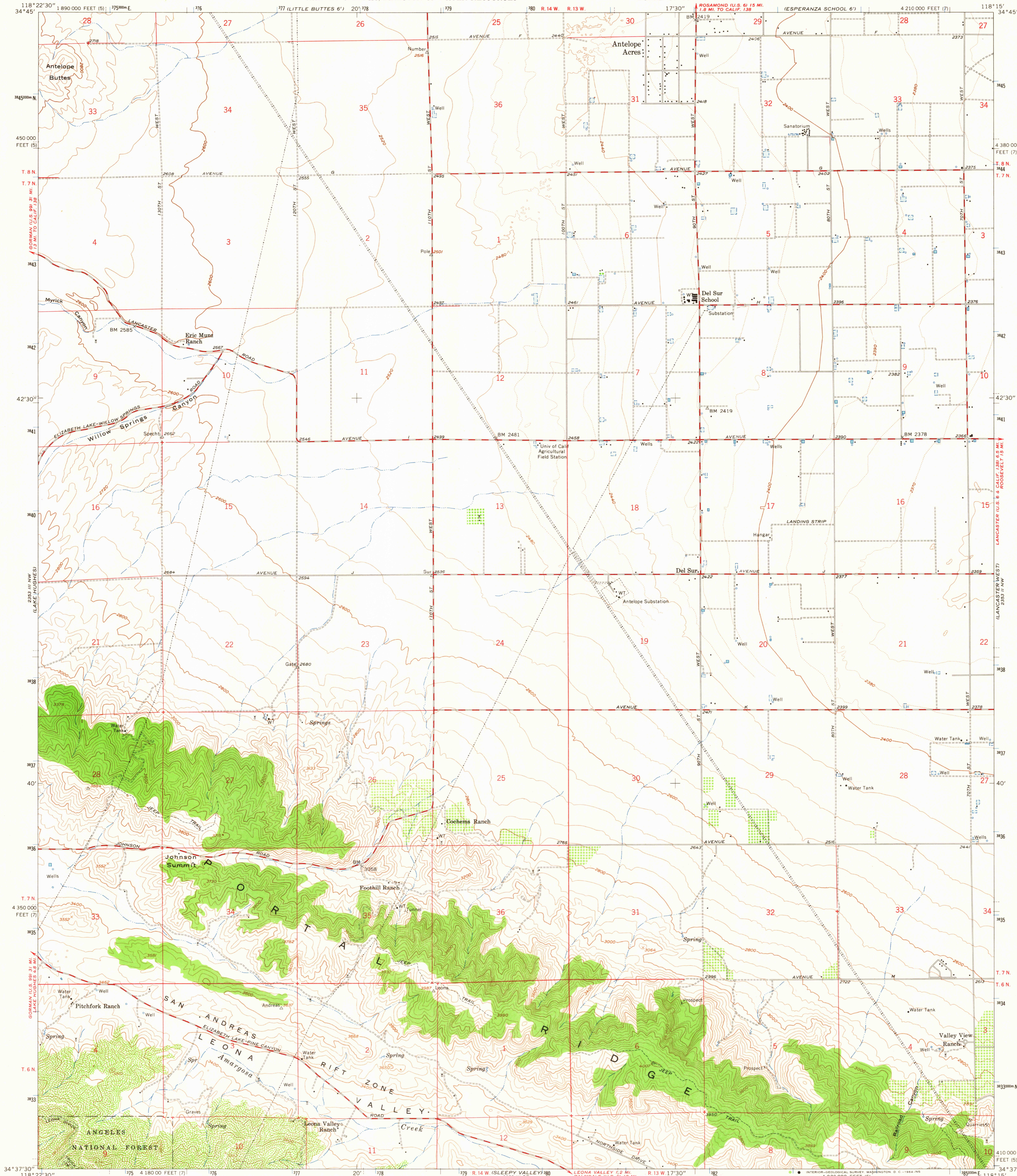


UNITED STATES  
DEPARTMENT OF THE INTERIOR  
GEOLOGICAL SURVEY

STATE OF CALIFORNIA  
EDMUND G. BROWN, GOVERNOR  
HARVEY O. BANKS, DIRECTOR OF WATER RESOURCES

LOS ANGELES COUNTY  
BOARD OF SUPERVISORS

DEL SUR QUADRANGLE  
CALIFORNIA-LOS ANGELES CO.  
7.5 MINUTE SERIES (TOPOGRAPHIC)  
NE 1/4 BOUQUET RESERVOIR 15 QUADRANGLE



Mapped, edited, and published by the Geological Survey  
Control by USGS and USC&GS  
Topography from planetable surveys 1931  
and by ER-55 plotter from aerial photographs  
taken 1956. Field check 1958  
Polyconic projection. 1927 North American datum.  
10,000-foot grids based on California coordinate system, zones 5 and 7.  
1000-meter Universal Transverse Mercator grid ticks,  
zone 11, shown in blue  
Unchecked elevations are shown in brown

UTM GRID AND 1958 MAGNETIC NORTH  
DECLINATION AT CENTER OF SHEET

SCALE 1:24,000  
1 0 1000 2000 3000 4000 5000 6000 7000 FEET  
1 0 1 2 3 4 5 6 7 8 9 10 KILOMETER  
CONTOUR INTERVAL 40 FEET  
DOTTED LINES REPRESENT 10-FOOT CONTOURS  
DATUM IS MEAN SEA LEVEL

USGS  
Historical File  
Topographic Division



QUADRANGLE LOCATION

ROAD CLASSIFICATION  
Medium-duty ——— Light-duty ———  
Unimproved dirt - - - - -

U.S.G.S.  
DEL SUR, CALIF.  
NE 1/4 BOUQUET RESERVOIR 15 QUADRANGLE  
M3437.5-W11815/7.5

1958  
AMS 2353 III NE-SERIES V895

THIS MAP COMPLIES WITH NATIONAL MAP ACCURACY STANDARDS  
FOR SALE BY U. S. GEOLOGICAL SURVEY, DENVER 25, COLORADO OR WASHINGTON 25, D. C.  
A FOLDER DESCRIBING TOPOGRAPHIC MAPS SYMBOLS IS AVAILABLE ON REQUEST

DEC 1 4 1964