

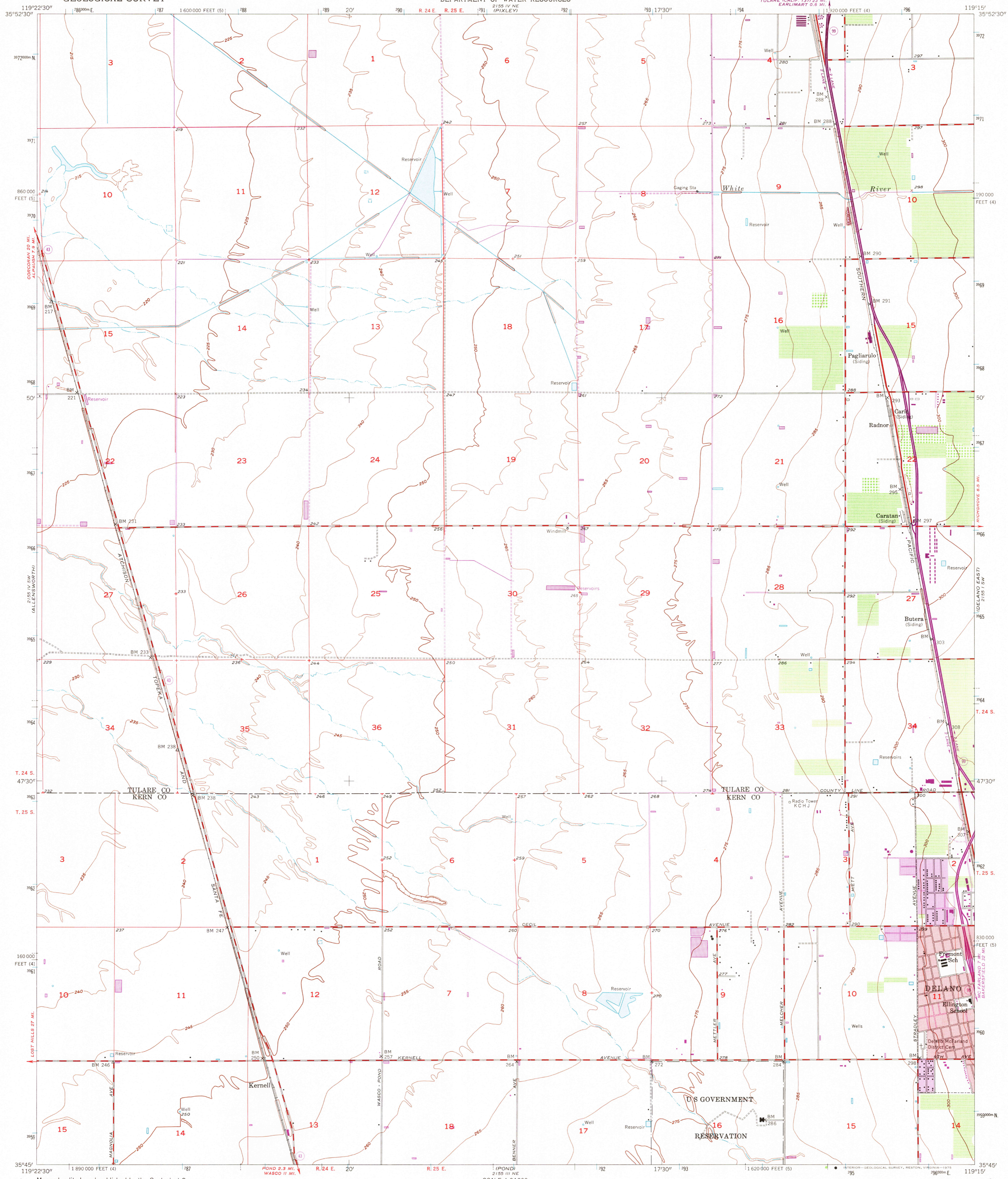
2155 IV NW  
2155 III NW

2155 IV NW  
2155 III NW  
(SALASAITO SCHOOL)

UNITED STATES  
DEPARTMENT OF THE INTERIOR  
GEOLOGICAL SURVEY

STATE OF CALIFORNIA  
DEPARTMENT OF WATER RESOURCES

DELANO WEST QUADRANGLE  
CALIFORNIA  
7.5 MINUTE SERIES (TOPOGRAPHIC)



Mapped, edited, and published by the Geological Survey

Control by USGS and USC&GS

Culture and drainage compiled from aerial photographs taken 1946. Topography by plane-table methods 1954

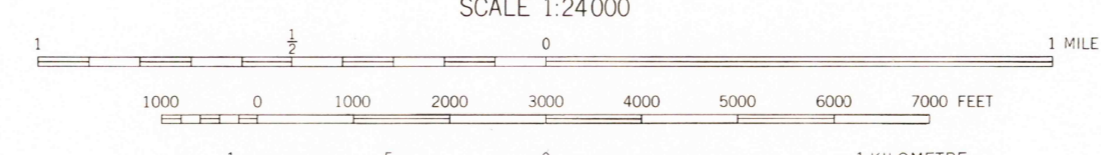
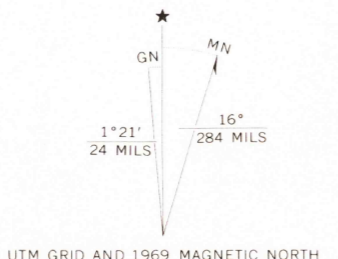
Polyconic projection. 1927 North American datum 10,000-foot grid based on California coordinate system, zones 4 and 5 1000-metre Universal Transverse Mercator grid ticks, zone 11, shown in blue

Red tint indicates areas in which only landmark buildings are shown

This map lies within a subsidence area

Purple tint indicates extension of urban areas

Revisions shown in purple compiled in cooperation with California Department of Water Resources from aerial photographs taken 1969. This information not field checked



CONTOUR INTERVAL 5 FEET  
NATIONAL GEODETIC VERTICAL DATUM OF 1929

THIS MAP COMPLIES WITH NATIONAL MAP ACCURACY STANDARDS  
FOR SALE BY U. S. GEOLOGICAL SURVEY, DENVER, COLORADO 80225, OR RESTON, VIRGINIA 22092  
A FOLDER DESCRIBING TOPOGRAPHIC MAPS AND SYMBOLS IS AVAILABLE ON REQUEST



QUADRANGLE LOCATION

USGS  
HISTORICAL FILE  
TOPOGRAPHIC DIVISION

ROAD CLASSIFICATION

Heavy-duty	Light-duty
Medium-duty	Unimproved dirt
State Route	

DELANO WEST, CALIF.

N 3545—W 11915/7.5  
PHOTOREVISED 1969  
1954

AMS 2155 IV SE—SERIES V895

WASCO NW  
2155 III NW

WASCO NW  
2155 III NW

5350