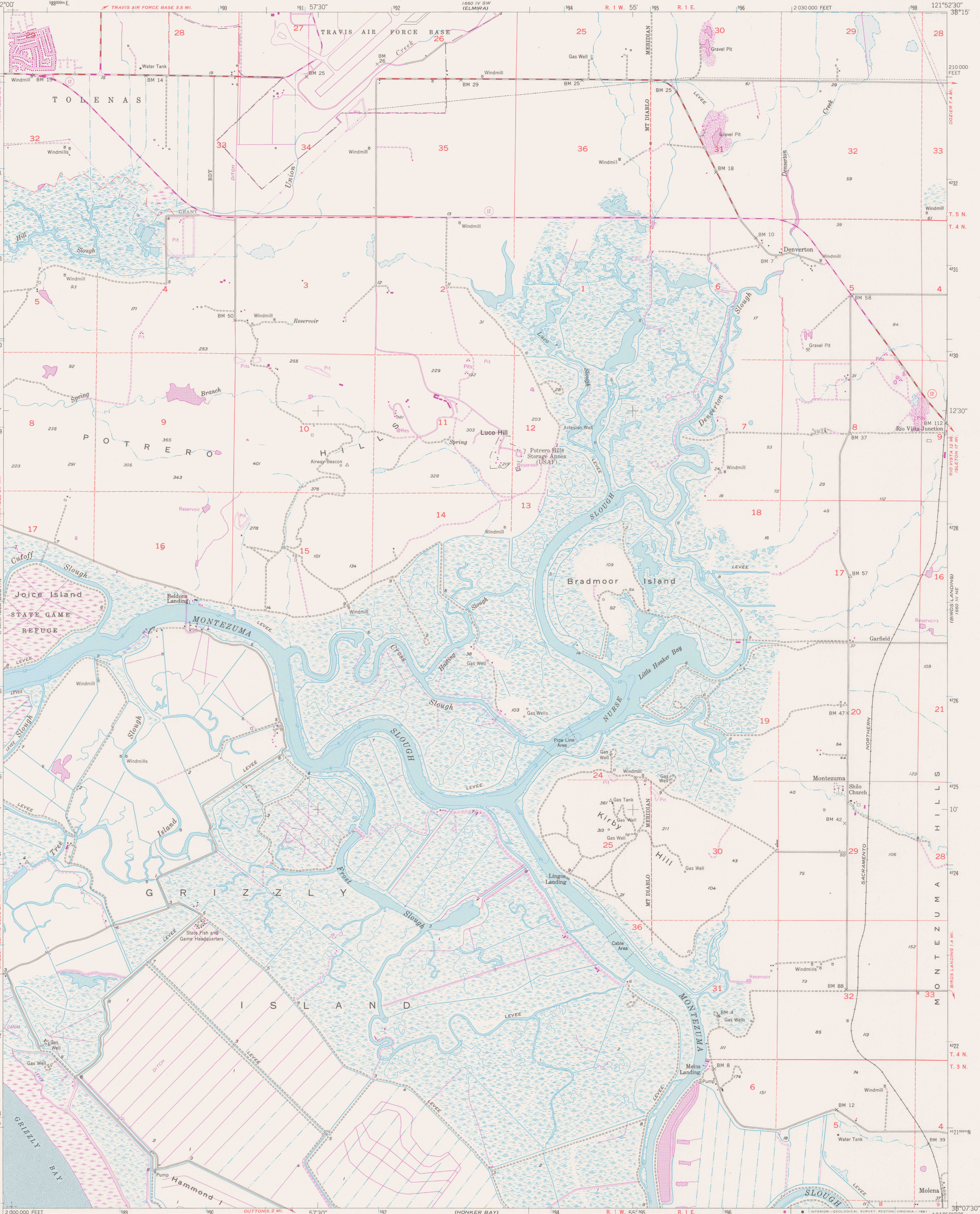


UNITED STATES  
DEPARTMENT OF THE INTERIOR  
GEOLOGICAL SURVEY

STATE OF CALIFORNIA  
DEPARTMENT OF WATER RESOURCES

DENVERTON QUADRANGLE  
CALIFORNIA-SOLANO CO.  
7.5 MINUTE SERIES (TOPOGRAPHIC)  
NW/4 PITTSBURG 15' QUADRANGLE



Mapped, edited, and published by the Geological Survey

Control by USGS and USC&GS

Culture and drainage in part by USC&GS from aerial photographs taken 1941  
Topography by plane-table surveys 1906-07 and by Kesh plotter methods from  
aerial photographs taken 1949. Contour revision and field check 1953

Hydrography compiled from USC&GS chart 5534

Polyconic projection

10,000-foot grid based on California coordinate system, zone 2

1000-meter Universal Transverse Mercator grid ticks, zone 10 shown in blue. 1927 North American Datum

To place on the predicted North American Datum 1983

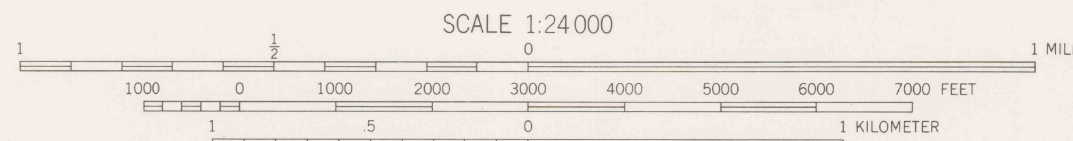
move the projection lines 1.4 meters north and 94 meters east as shown by dashed corner ticks

Dashed land lines indicate approximate locations

There may be private inholdings within the boundaries

of the National or State reservations shown on this map

Revisions shown in purple and woodland compiled from  
aerial photographs taken 1978 and other source data  
This information not field checked. Map edited 1980



CONTOUR INTERVAL 10 FEET

DOTTED LINES REPRESENT HALF-INTERVAL CONTOURS

CONTOURS INCOMPLETE ALONG EMBANKMENTS AND DITCHES

NATIONAL GEODETIC VERTICAL DATUM OF 1929

DEPTH CURVES IN FEET-DATUM IS MEAN LOWER LOW WATER

THE RELATIONSHIP BETWEEN THE TWO DATUMS IS VARIABLE

SHORELINE SHOWN REPRESENTS THE APPROXIMATE LINE OF MEAN HIGH WATER

THE MEAN RANGE OF TIDE IS APPROXIMATELY 4 FEET

THIS MAP COMPLIES WITH NATIONAL MAP ACCURACY STANDARDS  
FOR SALE BY U. S. GEOLOGICAL SURVEY, DENVER, COLORADO 80225, OR RESTON, VIRGINIA 22092  
A FOLDER DESCRIBING TOPOGRAPHIC MAPS AND SYMBOLS IS AVAILABLE ON REQUEST

DO NOT CIRCULATE



FOR EARLIER EDITION OF THIS MAP SEE ALSO:

3852 C4S 31 US

UNDER SAME QUAD NAME

ROAD CLASSIFICATION  
Heavy-duty \_\_\_\_\_ Light-duty \_\_\_\_\_  
Medium-duty \_\_\_\_\_ Unimproved dirt \_\_\_\_\_  
State Route \_\_\_\_\_

REFERENCE

DENVERTON, CALIF.

NW/4 PITTSBURG 15' QUADRANGLE

N3807.5—W12152.5/7.5

1953

PHOTOREVISED 1980

DMA 1660 III NW—SERIES V895

REB

3700

Van

U5

1. 19 20

rep. 1981 pp