

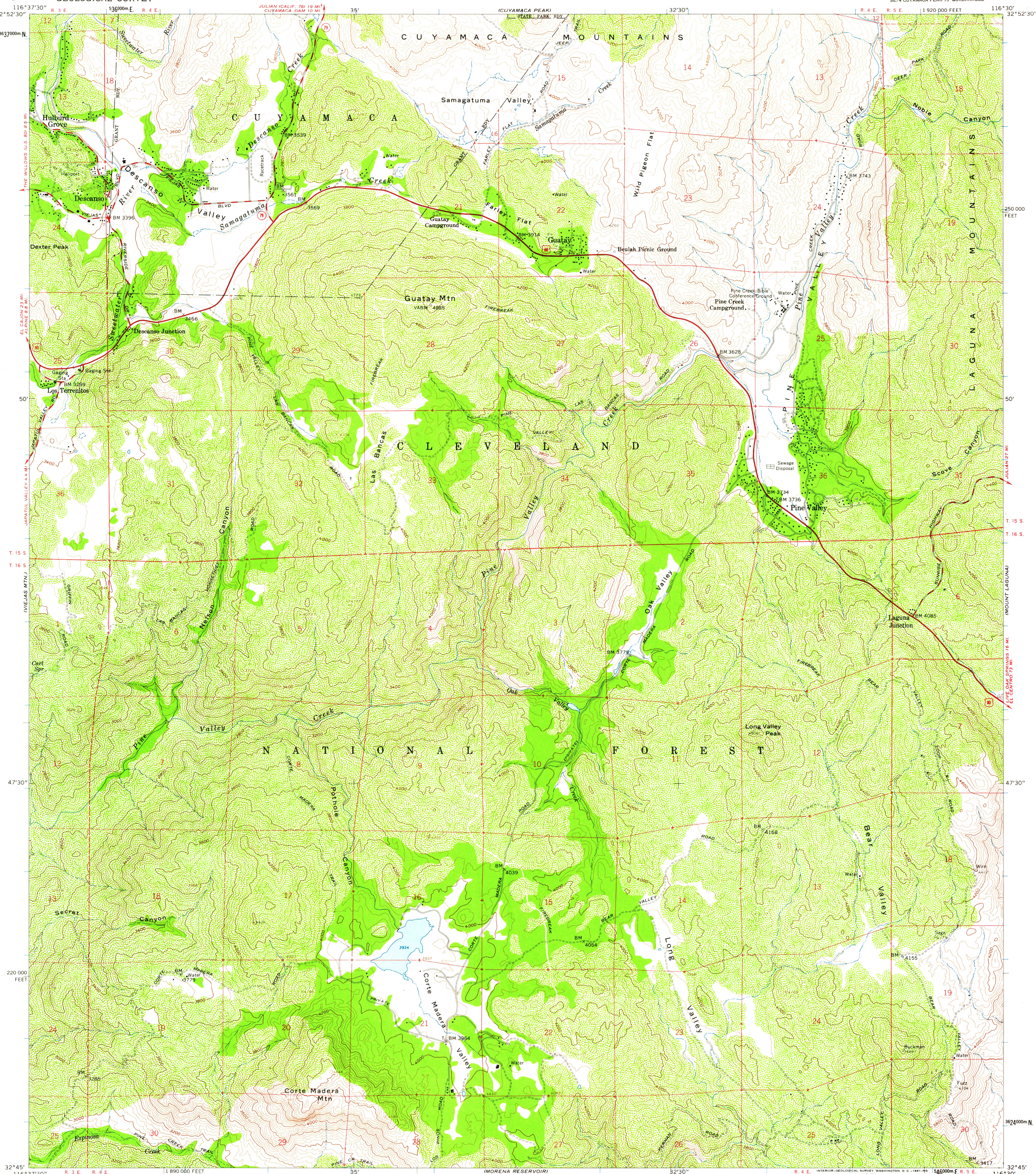
(TULE SPRINGS)

UNITED STATES  
DEPARTMENT OF THE INTERIOR  
GEOLOGICAL SURVEY

STATE OF CALIFORNIA  
DEPARTMENT OF WATER RESOURCES

DESCANSO QUADRANGLE  
CALIFORNIA—SAN DIEGO CO.  
7.5 MINUTE SERIES (TOPOGRAPHIC)  
SE/4 CUYAMACA PEAK 15' QUADRANGLE

(MONUMENT PEAK)



Mapped, edited, and published by the Geological Survey  
Control by USGS and USC&GS  
Topography from aerial photographs by photogrammetric methods  
Aerial photographs taken 1954. Field check 1960  
Polyconic projection. 1927 North American datum  
10,000-foot grids based on California coordinate system, zone 6  
1000-meter Universal Transverse Mercator grid ticks,  
zone 11, shown in blue  
Dashed land lines indicate approximate locations

TRUE NORTH  
MAGNETIC NORTH  
APPROXIMATE MEAN  
DECLINATION, 1960

SCALE 1:24,000  
1000 0 1000 2000 3000 4000 5000 6000 7000 FEET  
1 KILOMETER  
CONTOUR INTERVAL 40 FEET  
DATUM IS MEAN SEA LEVEL

THIS MAP COMPLIES WITH NATIONAL MAP ACCURACY STANDARDS  
FOR SALE BY U.S. GEOLOGICAL SURVEY, DENVER 25, COLORADO OR WASHINGTON 25, D.C.  
A FOLDER DESCRIBING TOPOGRAPHIC MAPS AND SYMBOLS IS AVAILABLE ON REQUEST

USGS  
Historical File  
Topographic Division



ROAD CLASSIFICATION  
Heavy-duty ——— Light-duty ———  
Medium-duty ——— Unimproved dirt ———  
U.S. Route ——— State Route ———

USGS  
TILE COPY  
GEOLOGICAL SURVEY

DESCANSO, CALIF.  
SE/4 CUYAMACA PEAK 15' QUADRANGLE  
N3245—W11630/7.5

1960

JUL 14 1961

2945