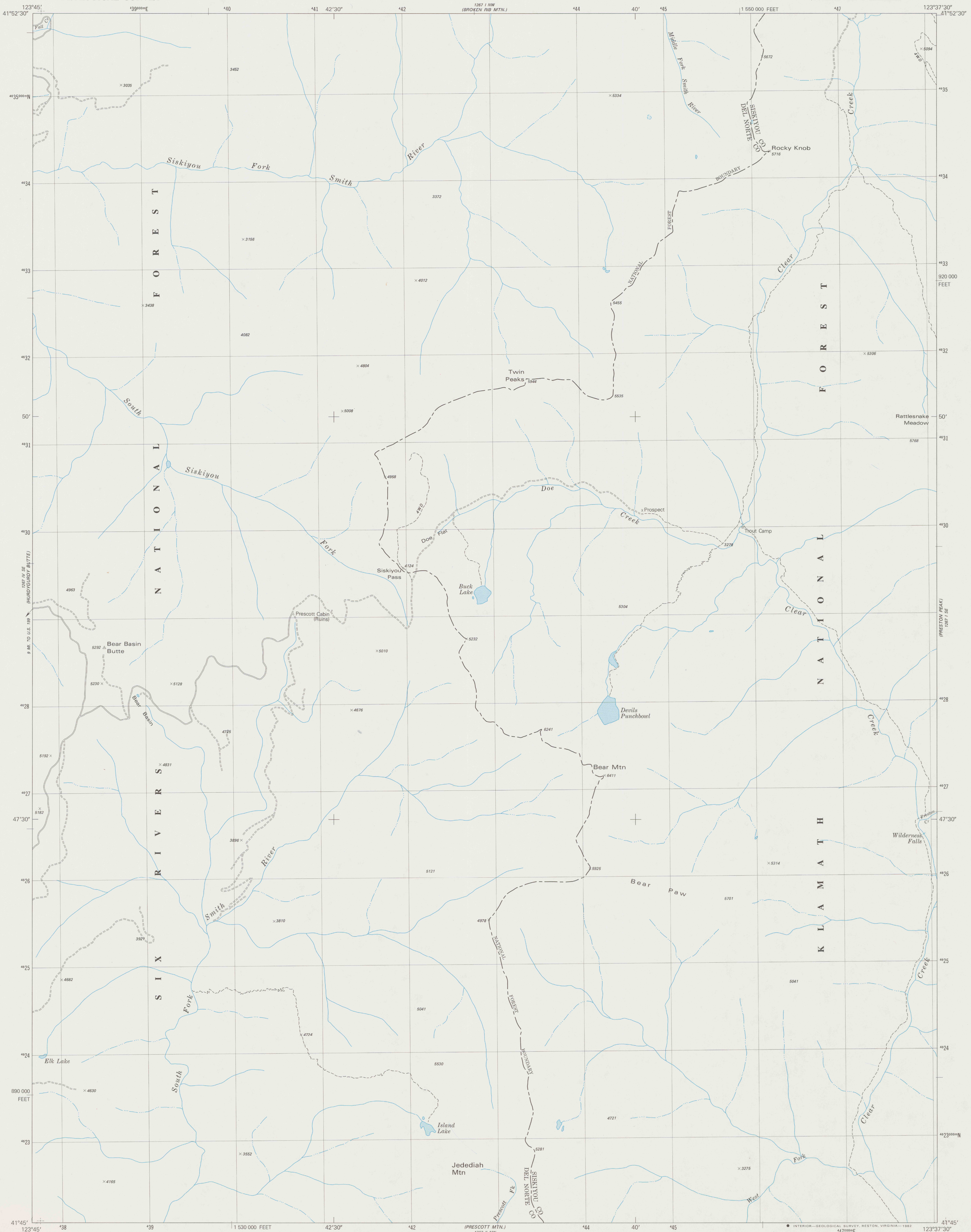
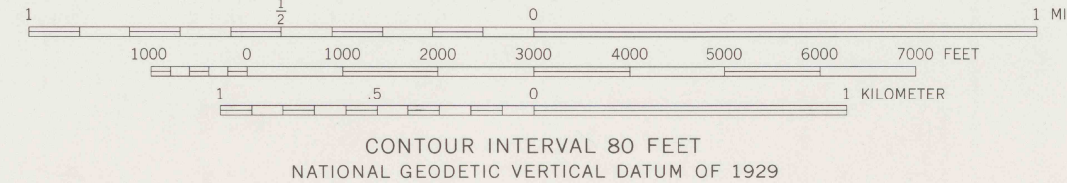
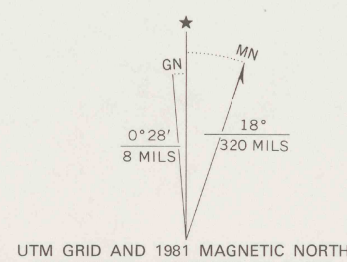


UNITED STATES  
DEPARTMENT OF THE INTERIOR  
GEOLOGICAL SURVEY

DEVILS PUNCHBOWL QUADRANGLE  
CALIFORNIA  
7.5 MINUTE SERIES (TOPOGRAPHIC)  
SW/4 PRESTON PEAK 15' QUADRANGLE



Mapped, edited, and published by the Geological Survey  
Control by USGS and NOS/NOAA  
Topography by photogrammetric methods from aerial photographs  
taken 1975. Field checked 1977. Map edited 1981  
Projection and 10,000-foot grid ticks: California coordinate  
system, zone 1 (Lambert conformal conic)  
1000-meter Universal Transverse Mercator grid, zone 10  
1927 North American Datum  
To place on the predicted North American Datum 1983  
move the projection lines 21 meters north and  
96 meters east as shown by dashed corner ticks  
Land lines are omitted because of insufficient data  
There may be private inholdings within the boundaries of  
the National or State reservations shown on this map



ROAD CLASSIFICATION  
Light-duty road, all weather, improved surface  
Unimproved road, fair or dry weather

DEVILS PUNCHBOWL, CALIF.  
SW/4 PRESTON PEAK 15' QUADRANGLE  
N4145-W12337.5/7.5

1981  
DMA 1267 I SW-SERIES V895

REFERENCE  
REF 3700s  
Var U5  
ed. 1981  
rep 1982 pp

DO NOT CIRCULATE