

(WALNUT CREEK)

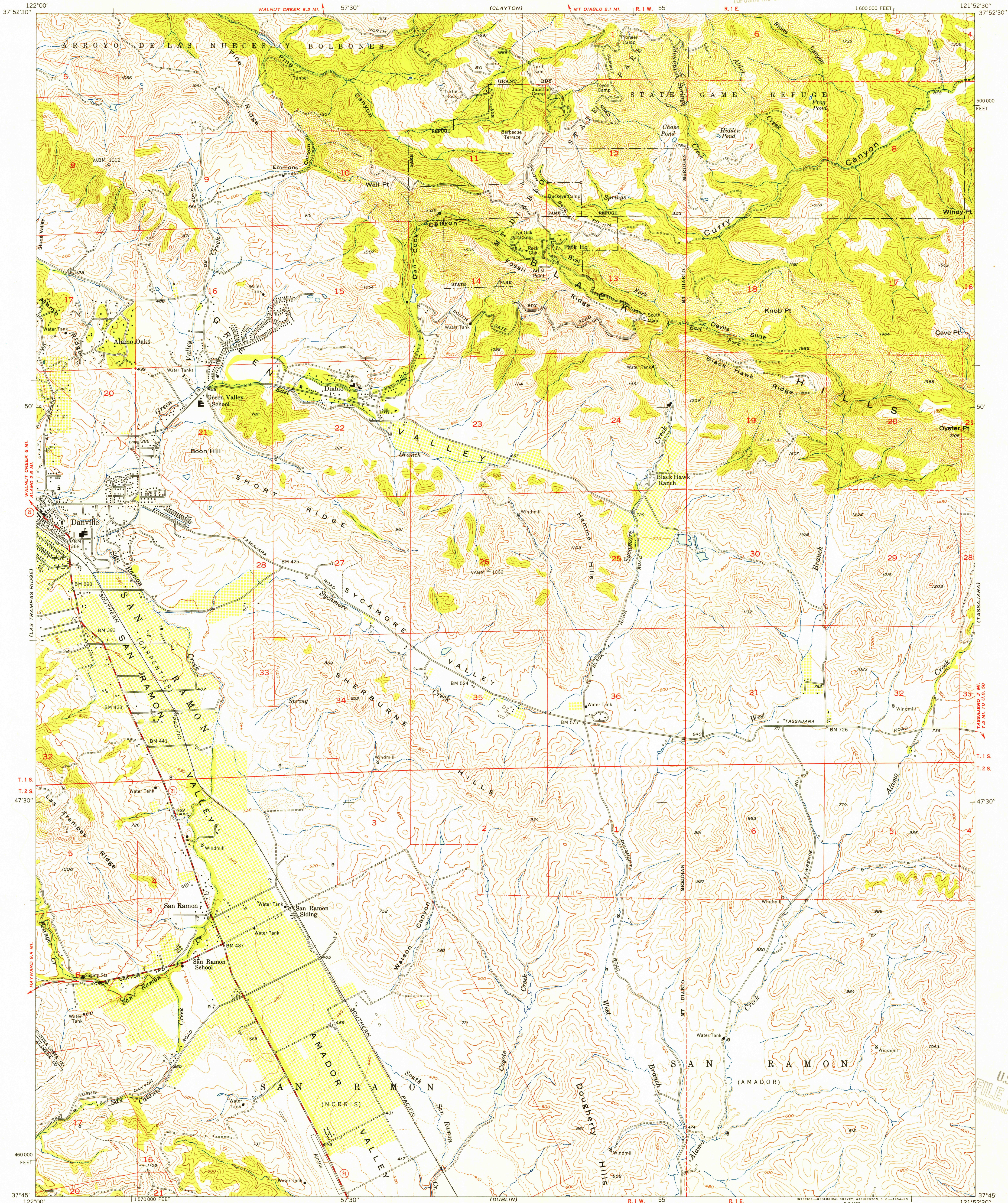
UNITED STATES
DEPARTMENT OF THE INTERIOR
GEOLOGICAL SURVEY

STATE OF CALIFORNIA
GOODWIN J. KNIGHT, GOVERNOR
FRANK B. DURKEE, DIRECTOR OF PUBLIC WORKS
A. D. EDMONSTON, STATE ENGINEER

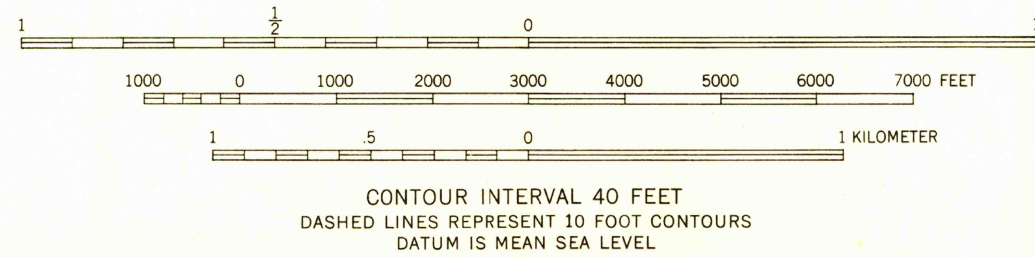
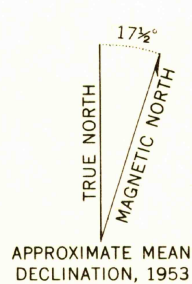
U.S.G.S.
FILE COPY
TOPOGRAPHIC DIVISION

DIABLO QUADRANGLE
CALIFORNIA
7.5 MINUTE SERIES (TOPOGRAPHIC)
SW/4 MT. DIABLO 15' QUADRANGLE

(ANTIOCH SOUTH)



Mapped, edited, and published by the Geological Survey
Control by USGS, USC&GS, and USCE
Topography from aerial photographs by photogrammetric methods
Aerial photographs taken 1949. Field check 1953
Polyconic projection. 1927 North American datum
10,000-foot grid based on California coordinate system, zone 3
Dashed land lines indicate approximate locations



USGS
Historical File
Topographic Division

ROAD CLASSIFICATION
Heavy-duty ——— 4 LANE 1 LANE Light-duty ———
Medium-duty ——— 4 LANE 1 LANE Unimproved dirt ———
U.S. Route ——— State Route ———



DIABLO, CALIF.
SW/4 MT. DIABLO 15' QUADRANGLE
N 3745—W 12152.5/7.5

1953

THIS MAP COMPLIES WITH NATIONAL MAP ACCURACY STANDARDS
FOR SALE BY U. S. GEOLOGICAL SURVEY, FEDERAL CENTER, DENVER, COLORADO OR WASHINGTON 25, D. C.
A FOLDER DESCRIBING TOPOGRAPHIC MAPS AND SYMBOLS IS AVAILABLE ON REQUEST

U.S.G.S.
FILE COPY
TOPOGRAPHIC DIVISION

NOV 19 1954
3675