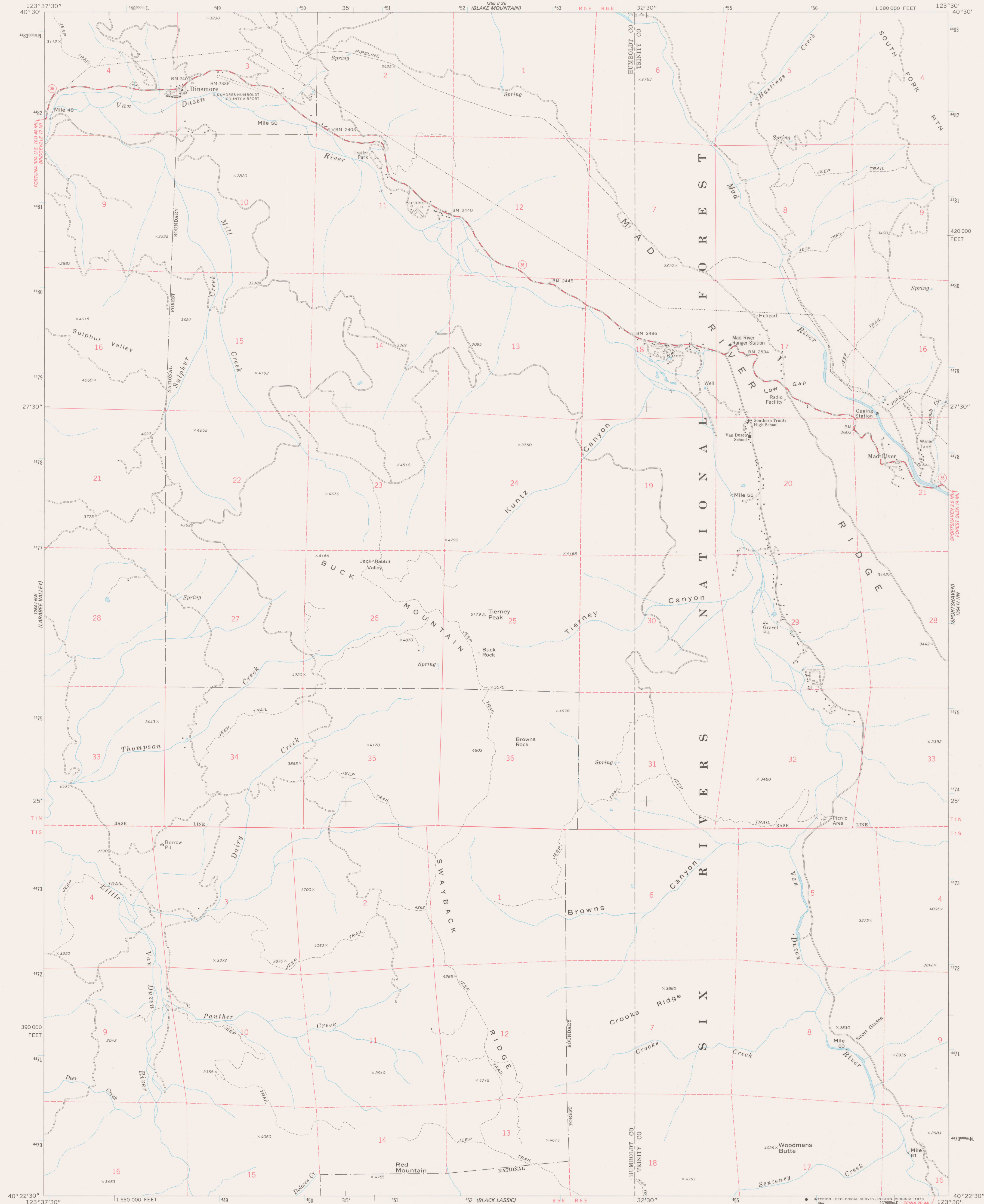
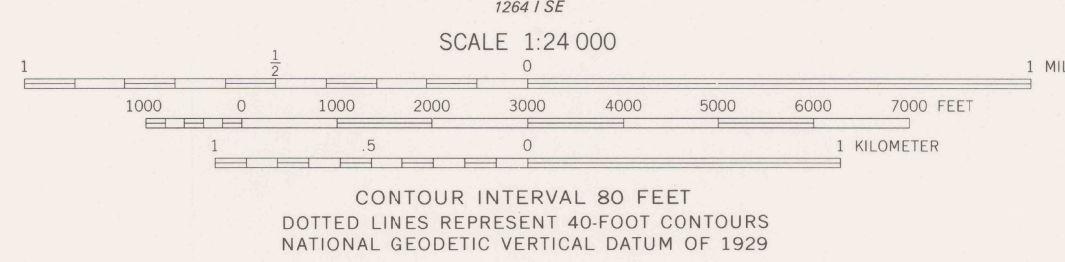
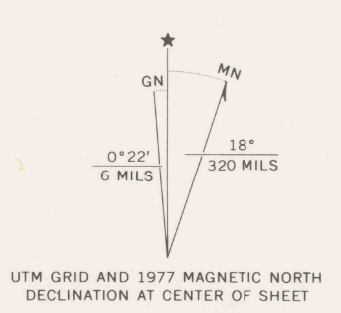


UNITED STATES  
DEPARTMENT OF THE INTERIOR  
GEOLOGICAL SURVEY

DINSMORE QUADRANGLE  
CALIFORNIA  
7.5 MINUTE SERIES (TOPOGRAPHIC)  
NE/4 BLOCKSBURG 15' QUADRANGLE  
1:580,000 FEET



Mapped, edited, and published by the Geological Survey  
Control by USGS and NOS/NOAA  
Topography by photogrammetric methods from aerial  
photographs taken 1968 and 1972. Field checked 1973  
Map edited 1977  
Projection and 10,000 foot grid ticks: California coordinate  
system, zone 1 (Lambert conformal conic)  
1000-meter Universal Transverse Mercator grid ticks,  
zone 10, shown in blue. 1927 North American datum  
Where omitted, land lines have not been established



ROAD CLASSIFICATION

Primary highway, hard surface	Light-duty road, hard or improved surface
Secondary highway, hard surface	Unimproved road
Interstate Route	U.S. Route
	State Route



DINSMORE, CALIF.  
NE/4 BLOCKSBURG 15' QUADRANGLE  
N4022.5-W12330/7.5  
1977  
AMS 1264 I NE-SERIES V895

REFERENCE

REF  
3700  
Var  
U5  
7.5  
ed. 1977  
rep. 1978 pp

FOR SALE BY U. S. GEOLOGICAL SURVEY, DENVER, COLORADO 80225, OR RESTON, VIRGINIA 22092  
A FOLDER DESCRIBING TOPOGRAPHIC MAPS AND SYMBOLS IS AVAILABLE ON REQUEST

DO NOT CIRCULATE