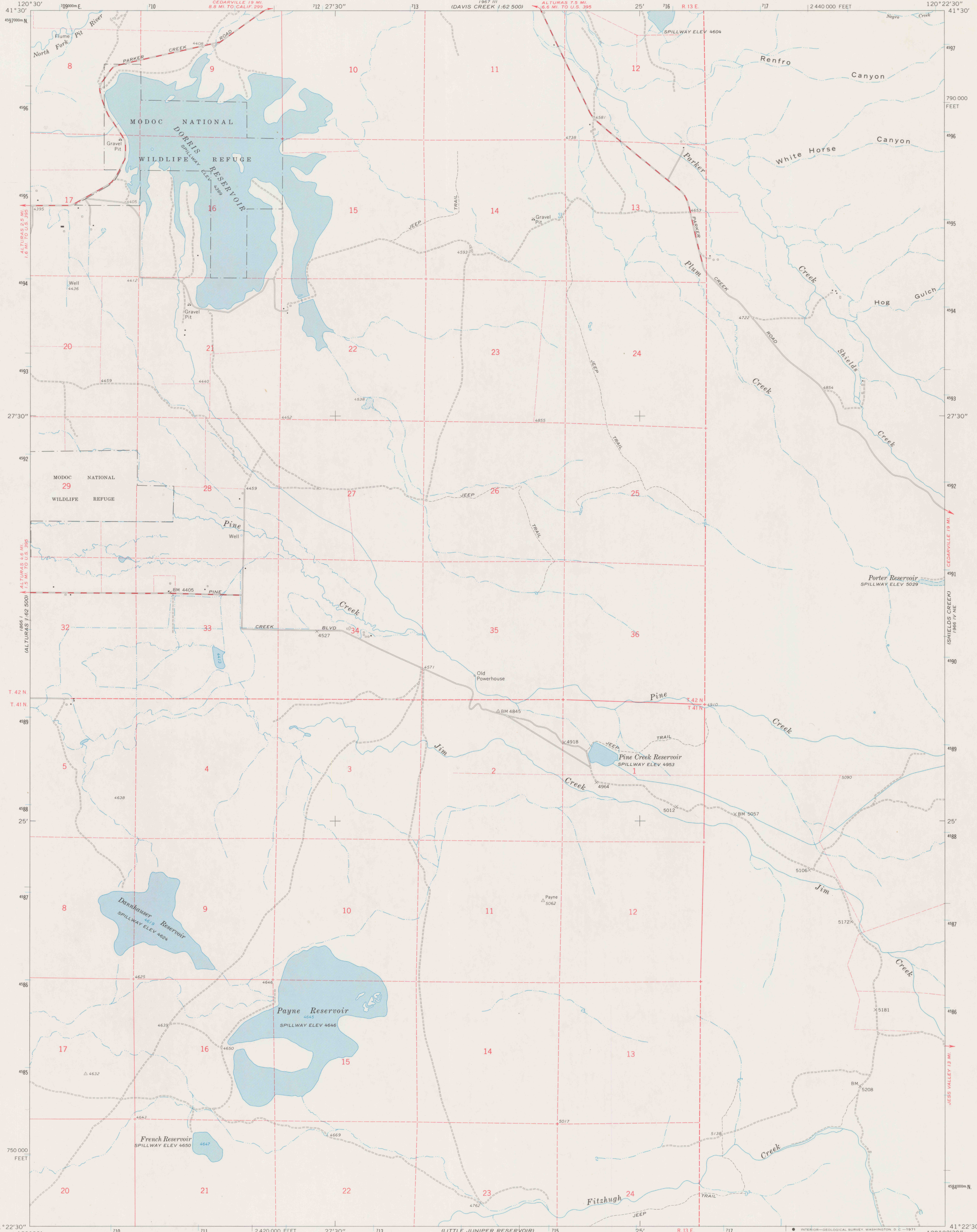
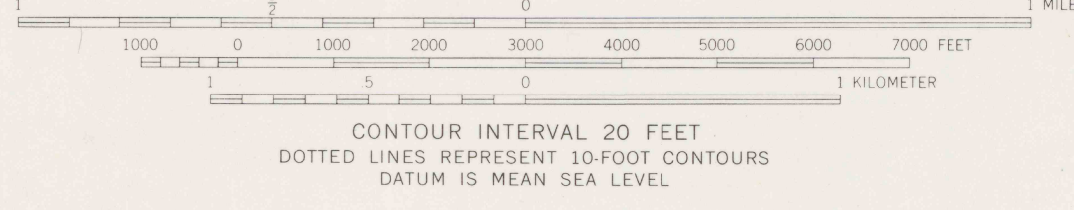
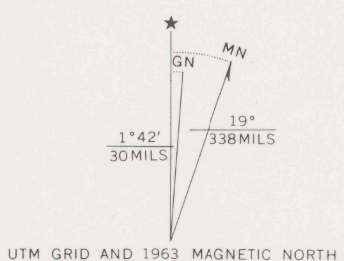


UNITED STATES
DEPARTMENT OF THE INTERIOR
GEOLOGICAL SURVEY

DORRIS RESERVOIR QUADRANGLE
CALIFORNIA—MODOC CO.
7.5 MINUTE SERIES (TOPOGRAPHIC)



Mapped, edited, and published by the Geological Survey
Control by USGS and USC&GS
Topography by photogrammetric methods from aerial
photographs taken 1959. Field checked 1963
Polyconic projection. 1927 North American datum
10,000-foot grid based on California coordinate system, zone 1
1000-meter Universal Transverse Mercator grid ticks,
zone 10, shown in blue
Fine red dashed lines indicate selected fence lines
Certain land lines are omitted because of insufficient data



| ROAD CLASSIFICATION | |
|---------------------|------------|
| Medium-duty | Light-duty |
| Unimproved dirt | |

REFERENCE

REF
3700
Var
U5
7.5

THIS MAP COMPLIES WITH NATIONAL MAP ACCURACY STANDARDS
FOR SALE BY U.S. GEOLOGICAL SURVEY, DENVER, COLORADO 80225, OR WASHINGTON, D.C. 20242
A FOLDER DESCRIBING TOPOGRAPHIC MAPS AND SYMBOLS IS AVAILABLE ON REQUEST

DO NOT CIRCULATE

DORRIS RESERVOIR, CALIF.
N4122.5—W12022.5/7.5

1963

AMS 1966 IV NW—SERIES V895

SPECIAL PRINTING
Contours and woodland symbols omitted

1866 I
ALTURAS 1.62 5000

1866 III
DAVIS CREEK 1.62 5000

1866 I
ALTURAS 1.62 5000

1866 III
DAVIS CREEK 1.62 5000