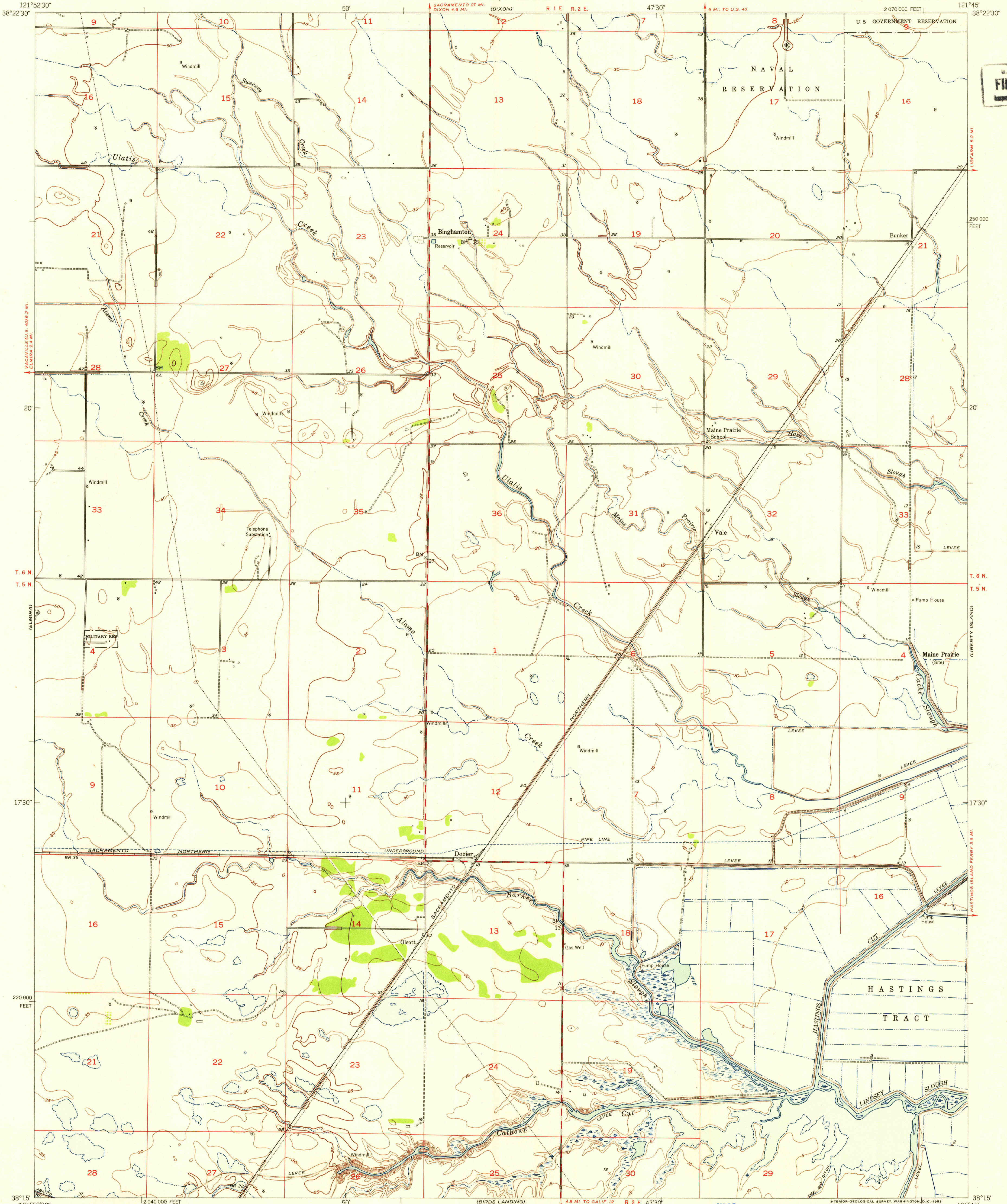
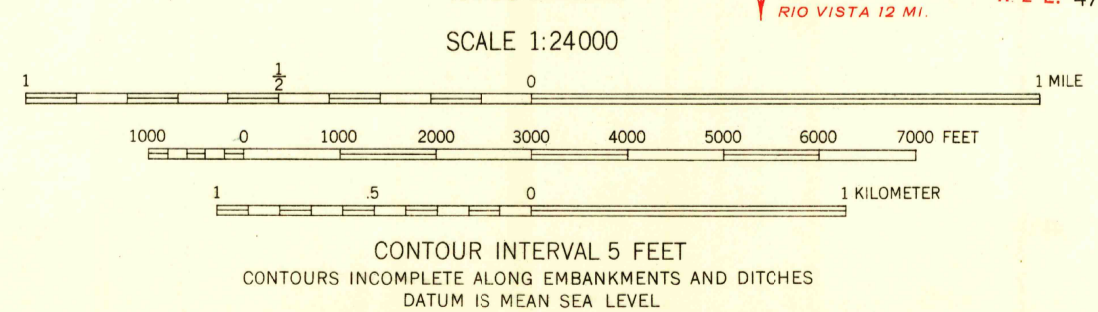


FILE COPY
Inspection and Editing



Mapped, edited, and published by the Geological Survey
Control by USGS and USC&GS
Mapped 1906, remapped 1952
Culture and drainage by USC&GS and USGS from
aerial photographs taken 1931 and 1949
Topography by USGS from plane-table surveys 1906 and 1952
Polyconic projection. 1927 North American datum
10,000-foot grid based on California coordinate system, zone 2



USGS
Historical File
Topographic Division

ROAD CLASSIFICATION
Heavy-duty 4 LANE 6 LANE Light-duty
Medium-duty 4 LANE 6 LANE Unimproved dirt
U. S. Route State Route

QUADRANGLE LOCATION

DOZIER, CALIF.
SE/4 VACAVILLE 15' QUADRANGLE
N3815-W12145/7.5

1952
FORMERLY MAINE PRAIRIE
(1:31630)
JUL 23 1953
2690

THIS MAP COMPLIES WITH NATIONAL MAP ACCURACY STANDARDS
FOR SALE BY U. S. GEOLOGICAL SURVEY, FEDERAL CENTER, DENVER, COLORADO OR WASHINGTON 25, D. C.
A FOLDER DESCRIBING TOPOGRAPHIC MAPS AND SYMBOLS IS AVAILABLE ON REQUEST