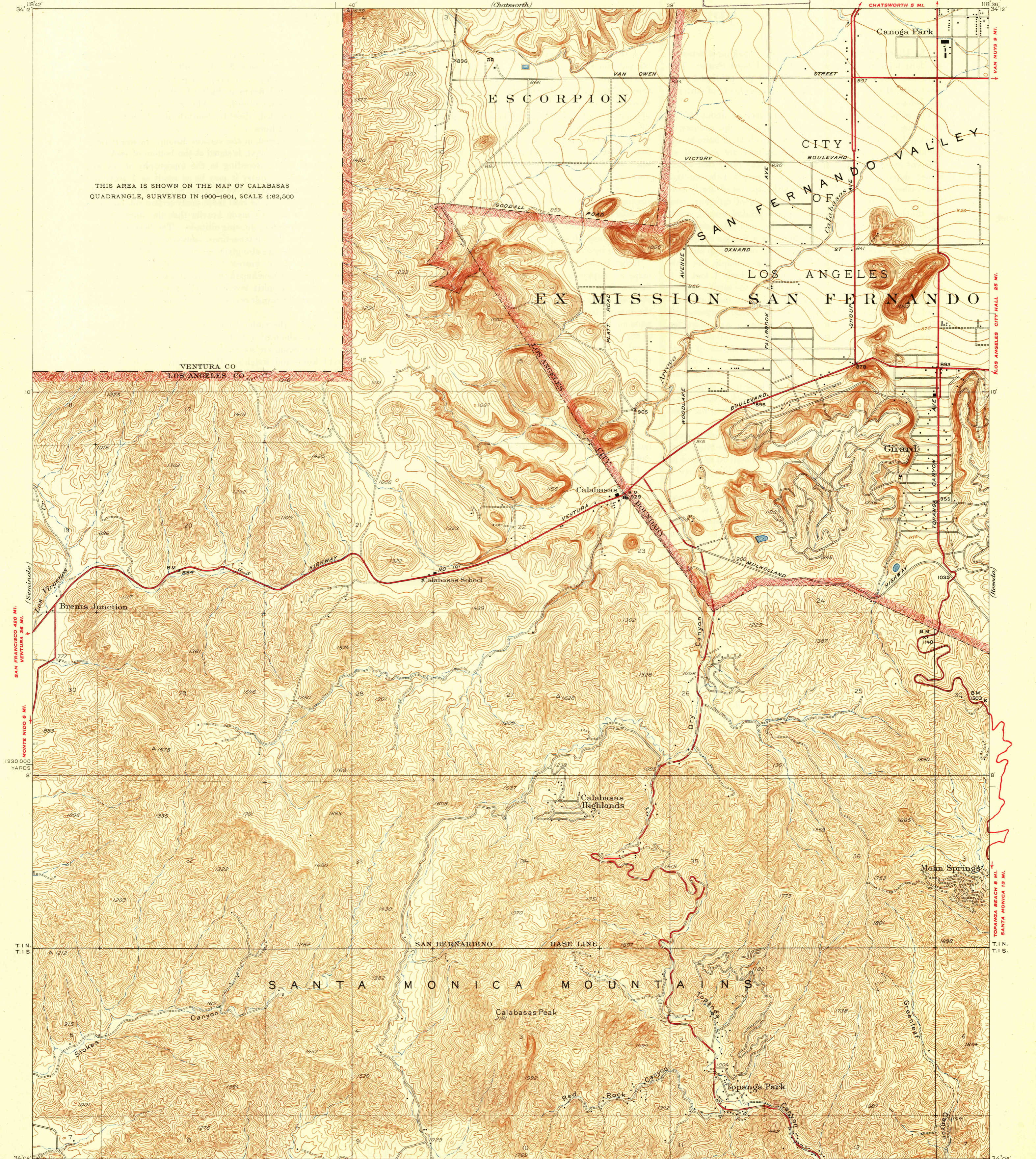
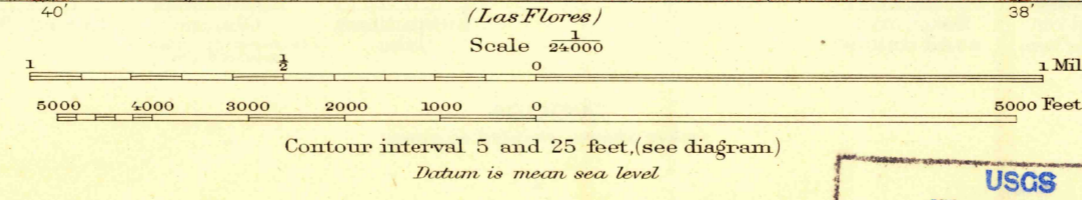
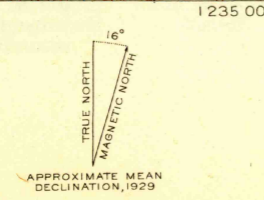


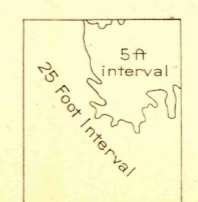
THIS AREA IS SHOWN ON THE MAP OF CALABASAS  
QUADRANGLE, SURVEYED IN 1900-1901, SCALE 1:62,500



Topography by R.M. Wilson and L.O. Newsome  
Control by U.S. Geological Survey  
and U.S. Coast and Geodetic Survey  
Surveyed in 1925 and 1929



USGS  
Historical File  
Topographic Division  
Invasion and Editing.



Polyconic projection. North American datum  
5000 yard grid based upon U.S. zone system, G

DRY CANYON, CALIF.  
Edition of 1932