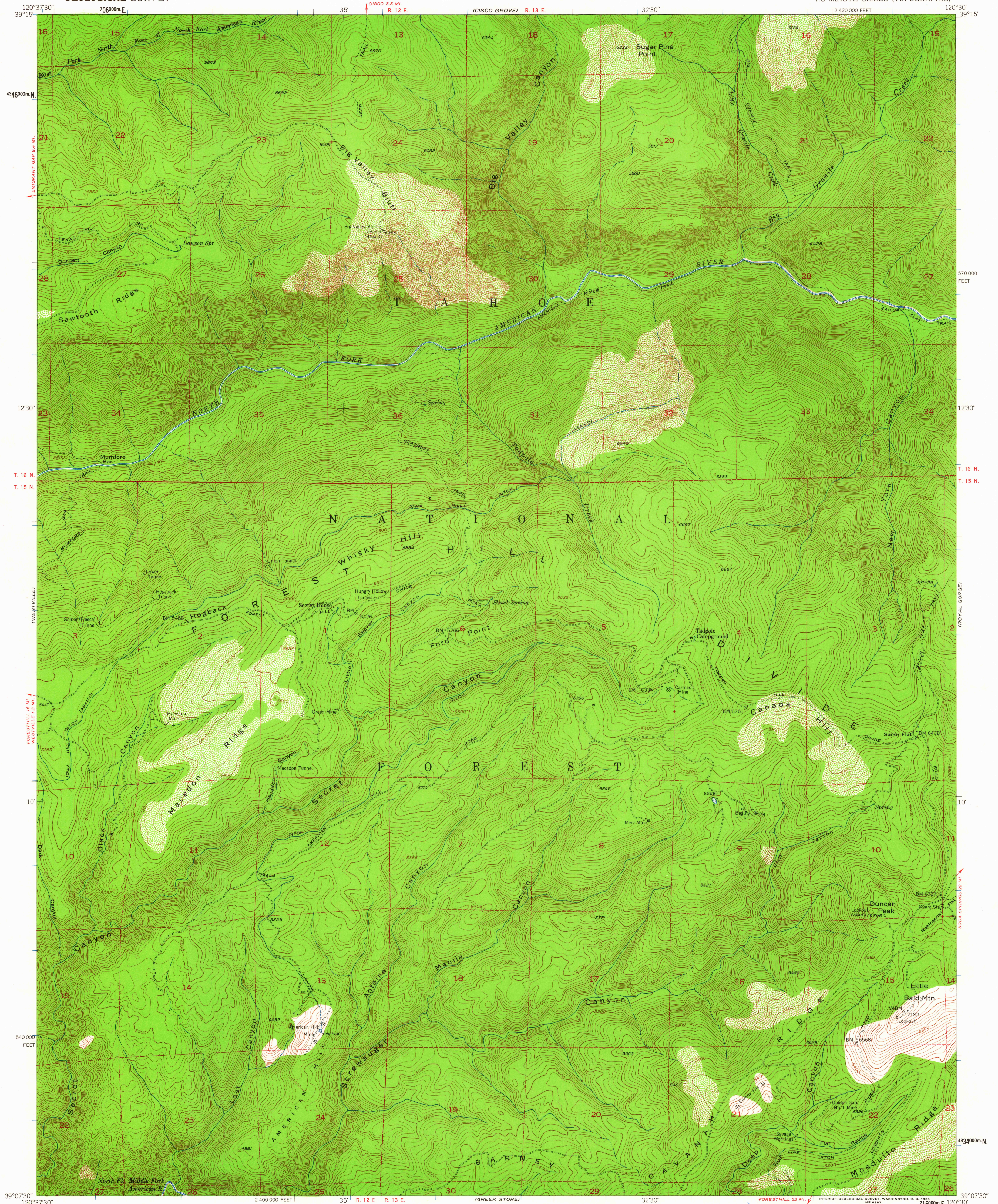


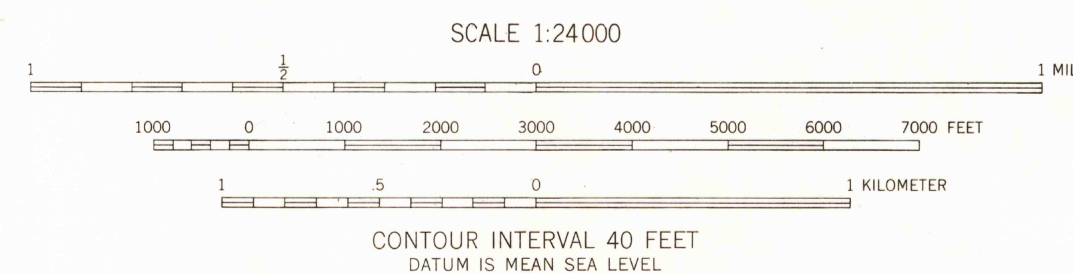
UNITED STATES
DEPARTMENT OF THE INTERIOR
GEOLOGICAL SURVEY

DUNCAN PEAK QUADRANGLE
CALIFORNIA-PLACER CO.
7.5 MINUTE SERIES (TOPOGRAPHIC)



Mapped, edited, and published by the Geological Survey
Control by USGS and USC&GS
Topography from aerial photographs by multiplex methods
Aerial photographs taken 1948. Field check 1952
Polyconic projection. 1927 North American datum
10,000-foot grid based on California coordinate system, zone 2
Dashed land lines indicate approximate locations
Unchecked elevations are shown in brown
1000-meter Universal Transverse Mercator grid ticks,
zone 10, shown in blue

TRUE NORTH
MAGNETIC NORTH
APPROXIMATE MEAN
DECLINATION, 1952



THIS MAP COMPLIES WITH NATIONAL MAP ACCURACY STANDARDS
FOR SALE BY U. S. GEOLOGICAL SURVEY, DENVER 25, COLORADO OR WASHINGTON 25, D. C.
A FOLDER DESCRIBING TOPOGRAPHIC MAPS SYMBOLS IS AVAILABLE ON REQUEST

USGS
Historical File
Topographic Division



ROAD CLASSIFICATION
1953
Light-duty ————— Unimproved dirt —————

U.S.G.S.
FILE COPY
TOPOGRAPHIC DIVISION

DUNCAN PEAK, CALIF.
N3907.5-W12030/7.5
1952

JUL 23 1953

3125