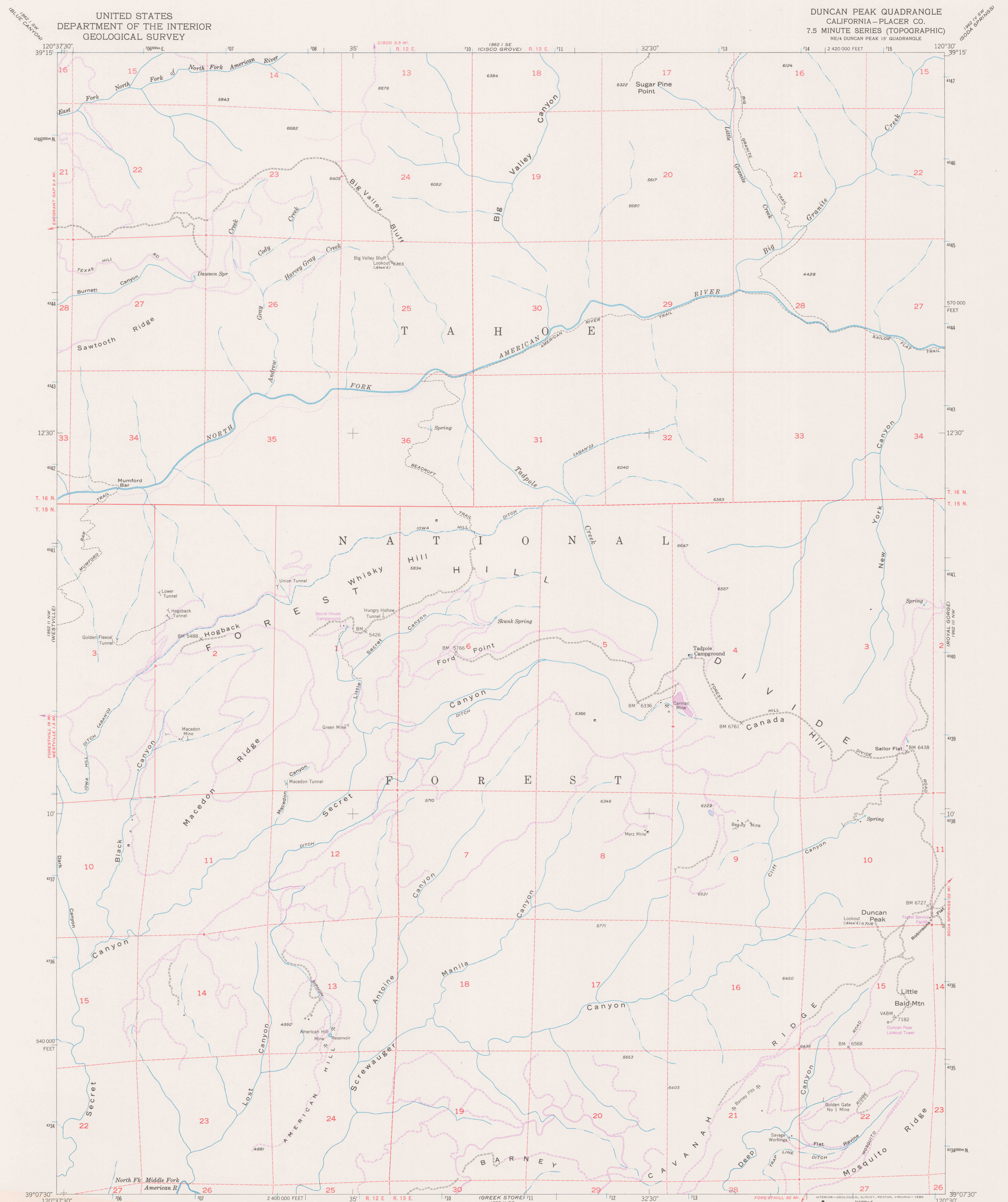


UNITED STATES
DEPARTMENT OF THE INTERIOR
GEOLOGICAL SURVEY

DUNCAN PEAK QUADRANGLE
CALIFORNIA—PLACER CO.
7.5 MINUTE SERIES (TOPOGRAPHIC)
NE/4 DUNCAN PEAK 15' QUADRANGLE



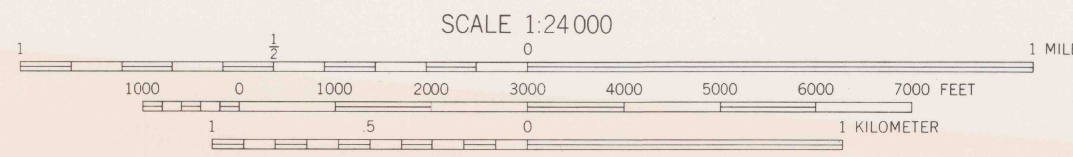
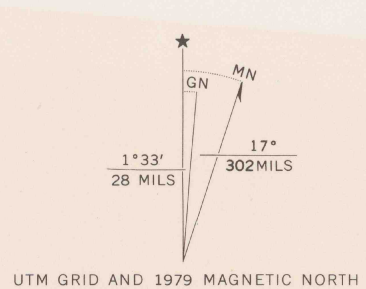
Mapped, edited, and published by the Geological Survey
Control by USGS and NOS/NOAA

Topography from aerial photographs by multiplex methods
Aerial photographs taken 1948. Field check 1952

Polyconic projection. 1927 North American datum
10,000-foot grid based on California coordinate system, zone 2
1000-meter Universal Transverse Mercator grid ticks,
zone 10, shown in blue

To place on the predicted North American Datum 1983
move the projection lines 14 meters north and
89 meters east as shown by dashed corner ticks

Dashed land lines indicate approximate locations
There may be private inholdings within the boundaries of
the National or State reservations shown on this map



CONTOUR INTERVAL 40 FEET
NATIONAL GEODETIC VERTICAL DATUM OF 1929

THIS MAP COMPLIES WITH NATIONAL MAP ACCURACY STANDARDS
FOR SALE BY U.S. GEOLOGICAL SURVEY, DENVER, COLORADO 80225, OR RESTON, VIRGINIA 22092
A FOLDER DESCRIBING TOPOGRAPHIC MAPS AND SYMBOLS IS AVAILABLE ON REQUEST

ROAD CLASSIFICATION
Light-duty ————— Unimproved dirt —————

DO NOT CIRCULATE

DUNCAN PEAK, CALIF.
NE/4 DUNCAN PEAK 15' QUADRANGLE
N3845—W12030/7.5

1952
PHOTOREVISED 1979
DMA 1862 II NE—SERIES V855



Revisions shown in purple compiled by the U.S. Forest Service
from aerial photographs taken 1976 and other source data
This information not field checked. Map edited by the
Geological Survey 1979

REB
3700a
Var
U5
7.5
ed. 1979
rep. 1980 pp