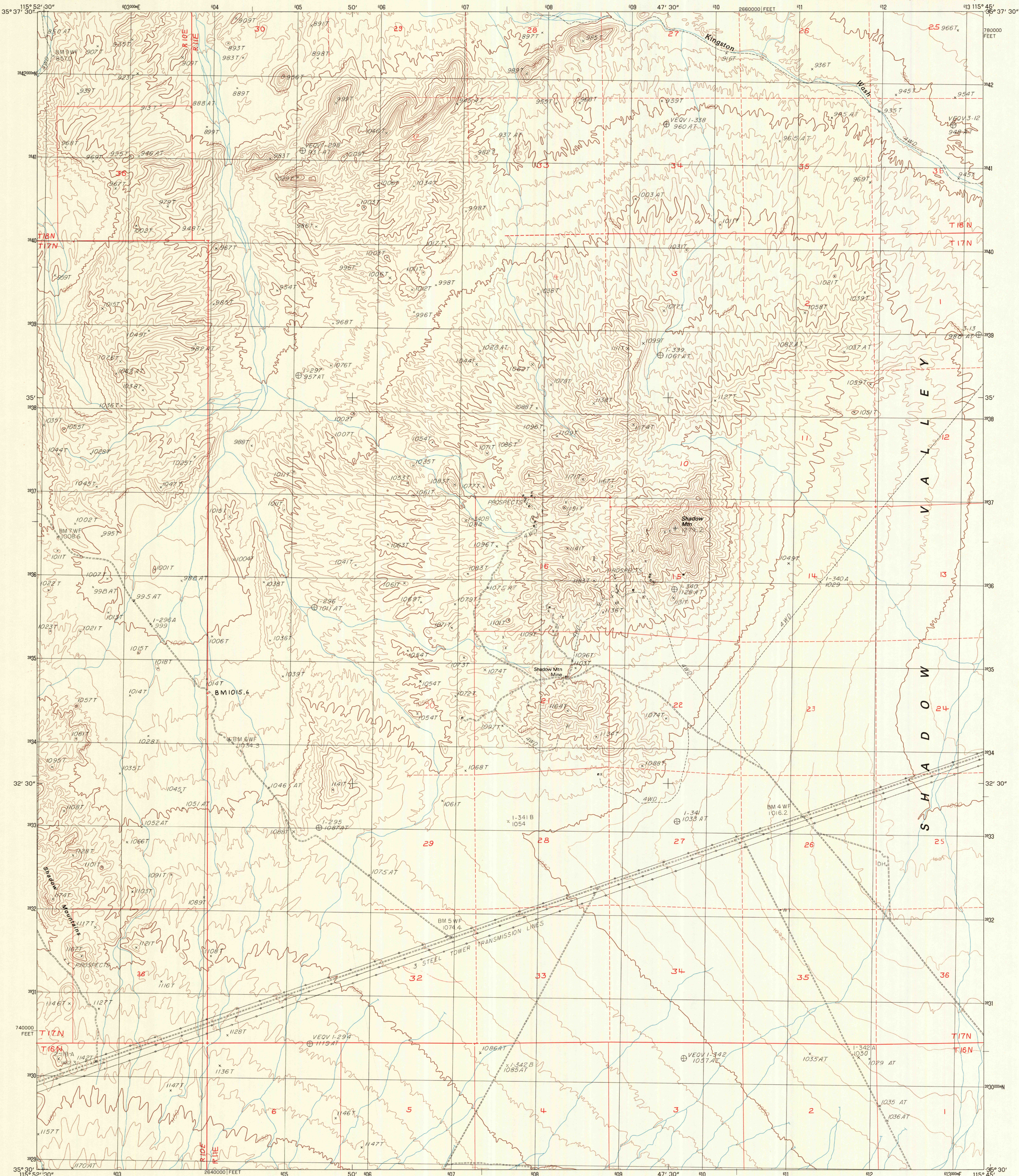


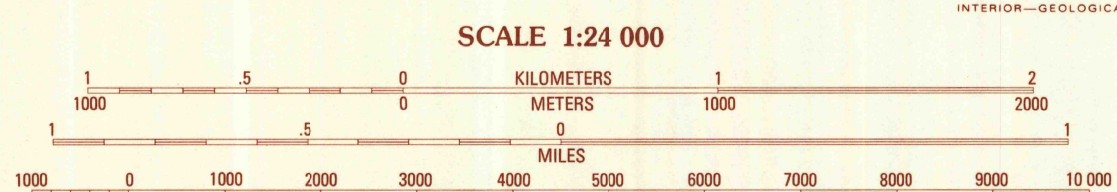
UNITED STATES  
DEPARTMENT OF THE INTERIOR  
GEOLOGICAL SURVEY

EAST OF KINGSTON SPRING QUADRANGLE  
CALIFORNIA—SAN BERNARDINO CO.  
7.5 MINUTE SERIES (TOPOGRAPHIC)



PRODUCED BY THE UNITED STATES GEOLOGICAL SURVEY  
CONTROL BY ..... USGS, NOS/NOAA  
COMPILED FROM AERIAL PHOTOGRAPHS TAKEN ..... 1976 AND 1978  
FIELD CHECKED ..... 1980. MAP EDITED ..... 1984  
PROJECTION ..... UNIVERSAL TRANSVERSE MERCATOR  
GRID: 1000-METER UNIVERSAL TRANSVERSE MERCATOR ..... ZONE 11  
10,000-FOOT STATE GRID TICKS ..... CALIFORNIA, ZONE 5  
UTM GRID DECLINATION ..... 941' EAST  
1980 MAGNETIC NORTH DECLINATION ..... 14°30' EAST  
VERTICAL DATUM ..... NATIONAL GEODETIC VERTICAL DATUM OF 1929  
HORIZONTAL DATUM ..... 1927 NORTH AMERICAN DATUM  
To place on the predicted North American Datum of 1983,  
move the projection lines as shown by dashed corner ticks  
( 4 meters north / 77 meters east )  
There may be private inholdings within the boundaries of any  
Federal and State Reservations shown on this map  
Where omitted, land lines have not been established

**PROVISIONAL MAP**  
Produced from original  
manuscript drawings. Informa-  
tion shown as of date of  
field check.



CONTOUR INTERVAL 10 METERS  
SUPPLEMENTARY CONTOUR INTERVAL 5 METERS  
CONTROL ELEVATIONS SHOWN TO THE NEAREST 0.1 METER  
OTHER ELEVATIONS SHOWN TO THE NEAREST METER  
To convert meters to feet multiply by 3.2808  
To convert feet to meters multiply by 0.3048

1	2	3	1 Kingston Peak
2	3	4	2 East of Kingston Peak
3	4	5	3 Mesquite Mts.
4	5	6	4 Kingston Spring
5	6	7	5 Pachalca Spring
6	7	8	6 Turquoise Mtn.
7	8		7 Solomons Knob
8			8 Valley Wells

ADJOINING 7.5' QUADRANGLE NAMES

CONTOURS AND ELEVATIONS IN METERS  
ROAD LEGEND

- Improved Road .....
- Unimproved Road .....
- Trail .....
- Interstate Route .....
- U.S. Route .....
- State Route .....

**EAST OF KINGSTON SPRING, CALIF.**  
PROVISIONAL EDITION 1984

35115-E7-TM-024

THIS MAP COMPLIES WITH NATIONAL MAP ACCURACY STANDARDS  
FOR SALE BY U. S. GEOLOGICAL SURVEY, DENVER, COLORADO 80225, OR RESTON, VIRGINIA 22092