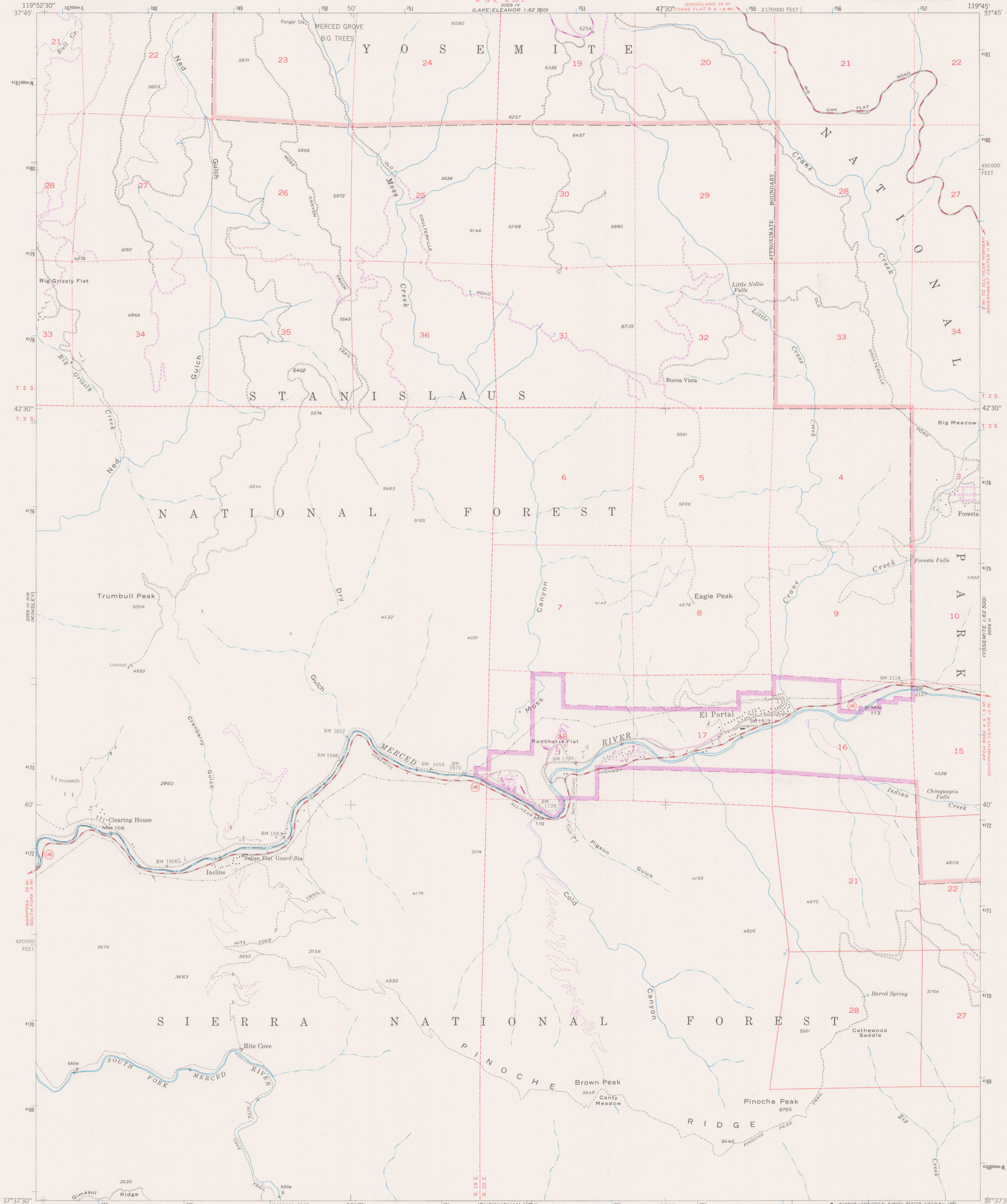
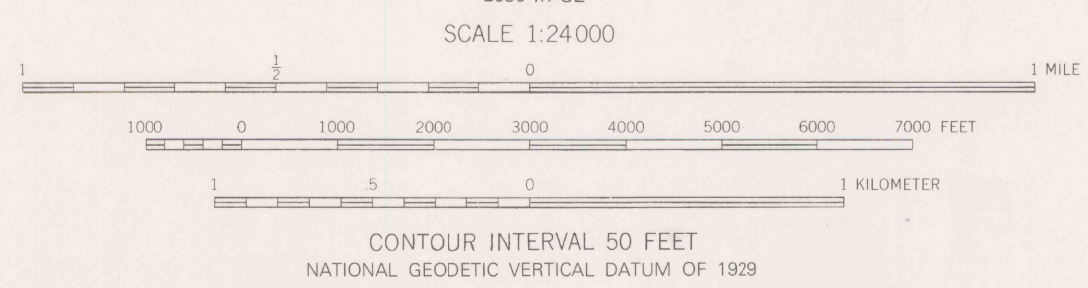
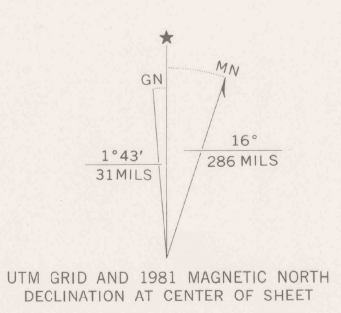


2059 IV  
1:62,500  
METCH HETCHY RES.



Mapped, edited, and published by the Geological Survey  
Control by USGS and NOS/NOAA  
Topography from aerial photographs by multiplex methods  
Aerial photographs taken 1945 Field check, 1947  
Polyconic projection, 1927 North American datum  
10,000-foot grid based on California coordinate system,  
zone 3  
1000-meter Universal Transverse Mercator grid ticks,  
zone 11, shown in blue  
To place on the predicted North American Datum 1983  
move the projection lines 11 meters north and  
88 meters east as shown by dashed corner ticks  
There may be private inholdings within the boundaries of  
the National or State reservations shown on this map



ROAD CLASSIFICATION

HARD-SURFACE ALL WEATHER ROADS	DRY WEATHER ROADS
Heavy-duty - 4 LANE LANE	Improved dirt
Medium-duty - 4 LANE LANE	Unimproved dirt

U. S. Route State Route

THIS MAP COMPLIES WITH NATIONAL MAP ACCURACY STANDARDS  
FOR SALE BY U. S. GEOLOGICAL SURVEY, DENVER, COLORADO 80225, OR RESTON, VIRGINIA 22092  
A FOLIO DESCRIBING TOPOGRAPHIC MAPS AND SYMBOLS IS AVAILABLE ON REQUEST

Revisions shown in purple compiled from aerial photographs  
taken 1978 and other source data. This information not  
field checked. Map edited 1981

REFERENCE  
REL  
3700  
Var  
U5  
7.5  
ed. 1981

DO NOT CIRCULATE