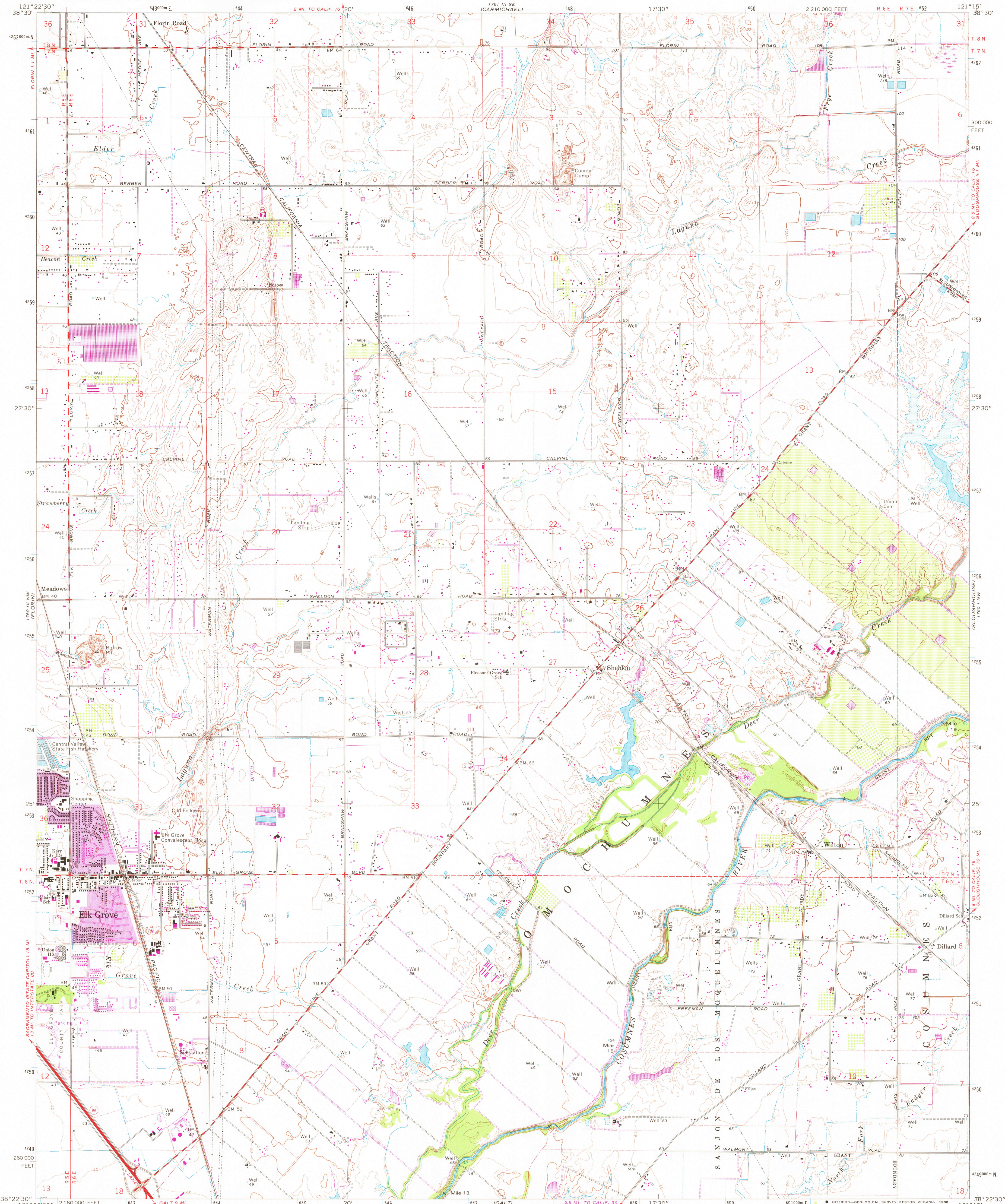


UNITED STATES
DEPARTMENT OF THE INTERIOR
GEOLOGICAL SURVEY



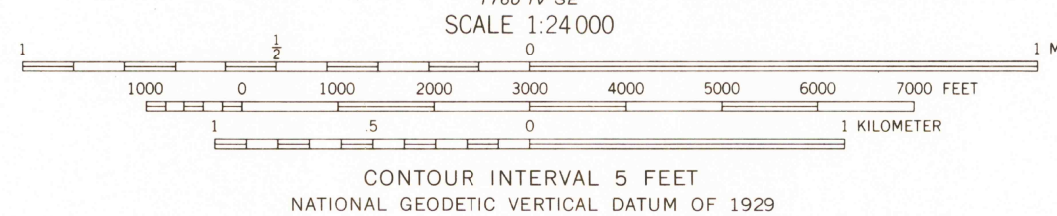
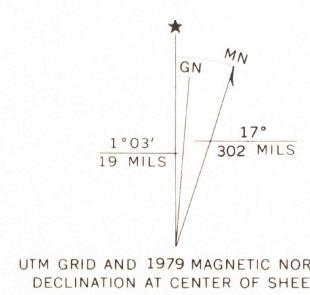
ELK GROVE QUADRANGLE
CALIFORNIA—SACRAMENTO CO.
7.5 MINUTE SERIES (TOPOGRAPHIC)



Mapped, edited, and published by the Geological Survey
Control by USGS and NOS/NOAA

Topography by photogrammetric methods from aerial
photographs taken 1966. Field checked 1968
Supersedes map surveyed 1907, revised 1952

Polyconic projection. 1927 North American datum
10,000-foot grid based on California coordinate system, zone 2
1000-meter Universal Transverse Mercator grid ticks,
zone 10, shown in blue
To place on the predicted North American Datum 1983
move the projection lines 14 meters north and
92 meters east as shown by dashed corner ticks
Areas covered by dashed light-blue pattern
are subject to controlled inundation



ROAD CLASSIFICATION
Heavy-duty ——— Light-duty ———
Medium-duty ——— Unimproved dirt ———
U.S. Route ——— State Route ———



USGS
Historical File
Topographic Division

ELK GROVE, CALIF.

N3822.5—W12115/7.5

1968
PHOTOREVISED 1979
DMA 1760 IV NE—SERIES V895

THIS MAP COMPLIES WITH NATIONAL MAP ACCURACY STANDARDS
FOR SALE BY U.S. GEOLOGICAL SURVEY, DENVER, COLORADO 80225, OR RESTON, VIRGINIA 22092
A FOLDER DESCRIBING TOPOGRAPHIC MAPS AND SYMBOLS IS AVAILABLE ON REQUEST

Revision shown in purple and woodland compiled by the County of
Sacramento from aerial photographs taken 1978 and other source data
This information not field checked. Map edited 1979

Purple tint indicates extension of urban areas

MAY - 9 1980

2350