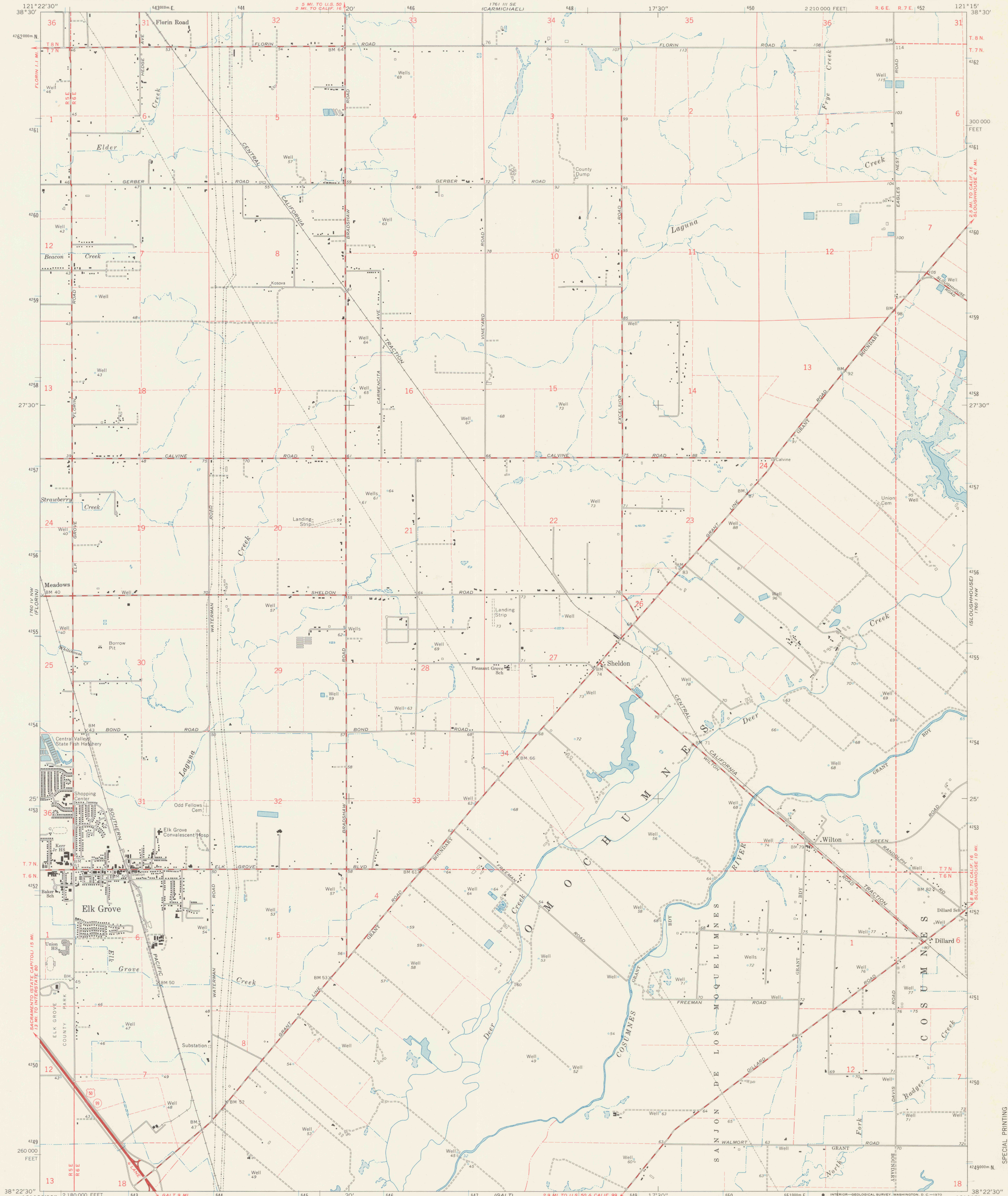


(SACRAMENTO EAST)

UNITED STATES
DEPARTMENT OF THE INTERIOR
GEOLOGICAL SURVEY

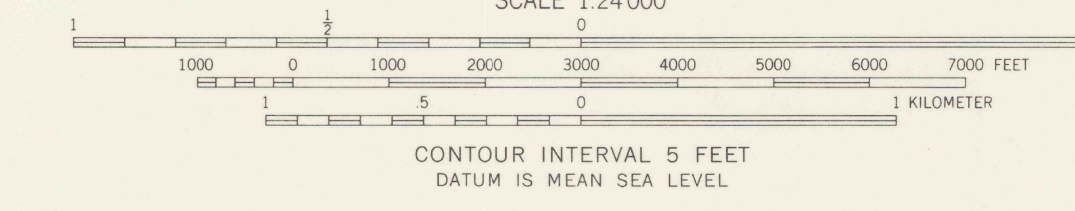
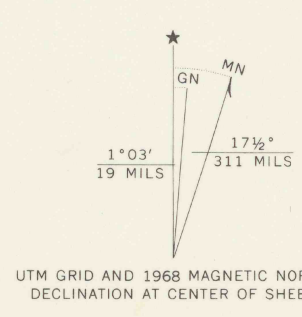
ELK GROVE QUADRANGLE
CALIFORNIA—SACRAMENTO CO.
7.5 MINUTE SERIES (TOPOGRAPHIC)
NE 1/4 FRANKLIN 15' QUADRANGLE

(BUFFALO CREEK)



SPECIAL PRINTING
Contours and woodland symbols omitted

Mapped, edited, and published by the Geological Survey
Control by USGS and USC&GS
Topography by photogrammetric methods from aerial
photographs taken 1966. Field checked 1968
Supersedes map surveyed 1907, revised 1952
Polyconic projection. 1927 North American datum
10,000-foot grid based on California coordinate system, zone 2
1000-meter Universal Transverse Mercator grid ticks,
zone 10, shown in blue
Fine red dashed lines indicate selected fence lines
Areas covered by dashed light-blue pattern
are subject to controlled inundation



THIS MAP COMPLIES WITH NATIONAL MAP ACCURACY STANDARDS
FOR SALE BY U.S. GEOLOGICAL SURVEY, DENVER, COLORADO 80225, OR WASHINGTON, D. C. 20542
A FOLDER DESCRIBING TOPOGRAPHIC MAPS AND SYMBOLS IS AVAILABLE ON REQUEST

ROAD CLASSIFICATION
Heavy-duty ——— Light-duty ———
Medium-duty ——— Unimproved dirt ———
U.S. Route ——— State Route ———

FOR EARLIER EDITION
OF THIS MAP, SEE ALSO
3852.C4S.31.15
QUADRANGLE LOCATION UNDER SAME QUAD NAME

REFERENCE
REB 3700a
Var U5
7.5
ed. 1968
AMS 1760 IV NE—SERIES 7895

DO NOT CIRCULATE