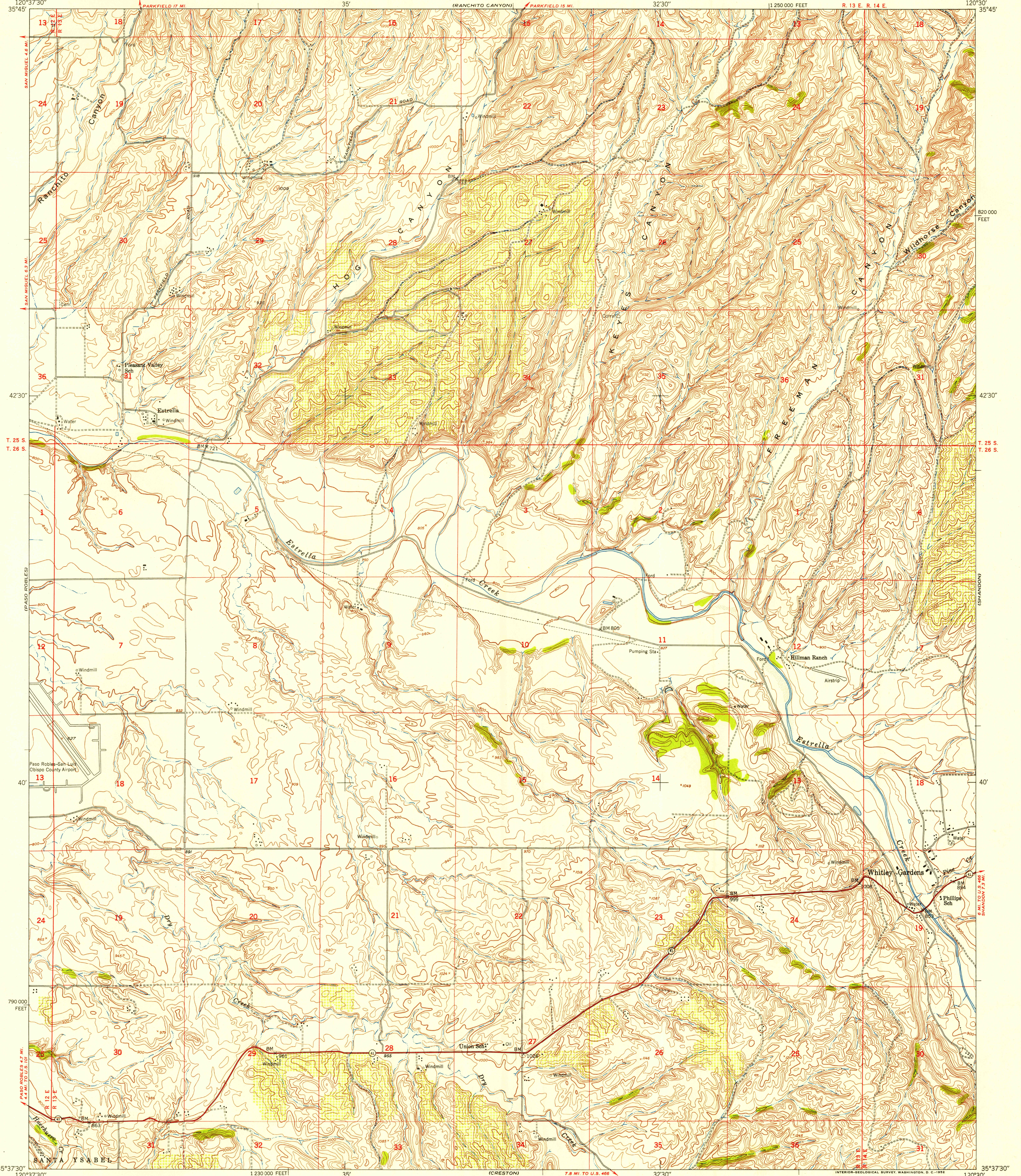


U.S.G.S. FILE COPY

UNITED STATES DEPARTMENT OF THE INTERIOR GEOLOGICAL SURVEY

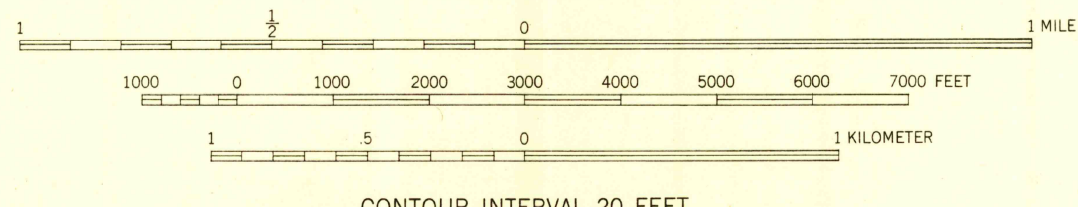
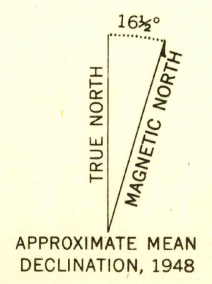
UNITED STATES DEPARTMENT OF THE ARMY CORPS OF ENGINEERS

ESTRELLA QUADRANGLE CALIFORNIA-SAN LUIS OBISPO CO. 7.5 MINUTE SERIES (TOPOGRAPHIC) NE/4 PASO ROBLES 15' QUADRANGLE



Map grid coordinates: 120°37'30", 35°45', 35°, 32'30", 120°30', 35°45', 42'30", 42°30", 40', 40', 35°37'30", 120°37'30", 1230 000 FEET, 35°, (CRESTON), 7.8 MI. TO U.S. 468, 32'30", 120°30', 35°37'30".

Map by the Army Map Service
Published for civil use by the Geological Survey
Control by USGS, USC&GS, and USCE
Topography from aerial photographs by multiplex methods
Aerial photographs taken 1947. Field check 1948
Polyconic projection. 1927 North American datum
10,000-foot grid based on California coordinate system, zone 5
No distinction is made between dwellings, barns, commercial and industrial buildings
Unchecked elevations are shown in brown
Dashed land lines indicate approximate locations



CONTOUR INTERVAL 20 FEET
DATUM IS MEAN SEA LEVEL

THIS MAP COMPLIES WITH NATIONAL MAP ACCURACY STANDARDS
FOR SALE BY U. S. GEOLOGICAL SURVEY, FEDERAL CENTER, DENVER, COLORADO OR WASHINGTON 25, D. C.
A FOLDER DESCRIBING TOPOGRAPHIC MAPS AND SYMBOLS IS AVAILABLE ON REQUEST

USGS
Historical File
Topographic Division

ROAD CLASSIFICATION

Heavy-duty	4 LANE 16 LANE	Light-duty	2 LANE 16 LANE
Medium-duty	4 LANE 10 LANE	Unimproved dirt	-----

U. S. Route State Route

U.S.G.S. FILE COPY

ESTRELLA, CALIF.
NE/4 PASO ROBLES 15' QUADRANGLE
N3537.5-W12030/7.5

1948

SEP 20 1952

2115