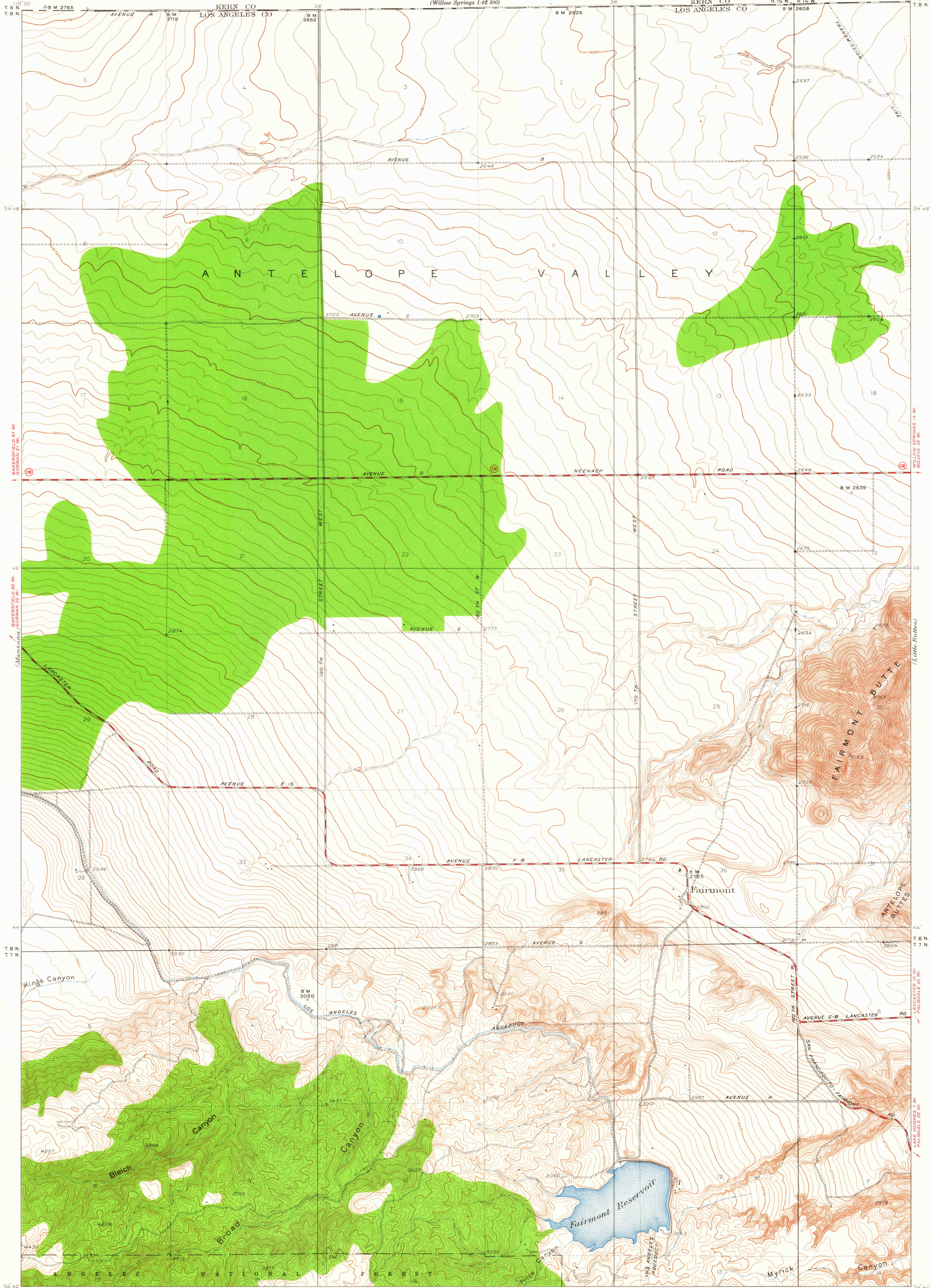
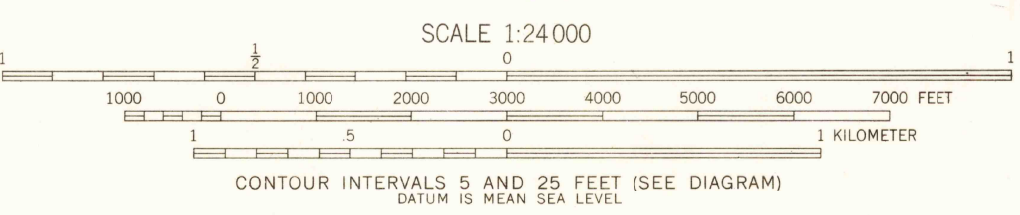


(Willow Springs 1:62,500)

(Willow Springs)
1:62,500



Topography by F. K. Van Zandt
Control by U.S. Geological Survey and
Los Angeles Aqueduct Commission
Surveyed in 1932
Culture revised in 1950
Los Angeles County (T.H. Moncreur)



Interior—Geological Survey, Washington, D.C.—1953
R. 15 W. R. 14 W.
Polyconic projection. To place on 1927 North American datum
move projection lines 80 feet north and 110 feet west

ROAD CLASSIFICATION
1963
Medium-duty — Light-duty
Unimproved dirt — State Route

TRUE NORTH
MAGNETIC NORTH
APPROXIMATE MEAN
DECLINATION, 1950

USGS
Historical File
Topographic Division

U.S.G.S.
FILE COPY
TOPOGRAPHIC DIVISION

FAIRMONT, CALIF.
N3442—W11824/7.26
1950

FOR SALE BY U.S. GEOLOGICAL SURVEY, DENVER 25, COLORADO OR WASHINGTON 25, D.C.
A FOLDER DESCRIBING TOPOGRAPHIC MAPS AND SYMBOLS IS AVAILABLE ON REQUEST

JUL 16 1963

2705