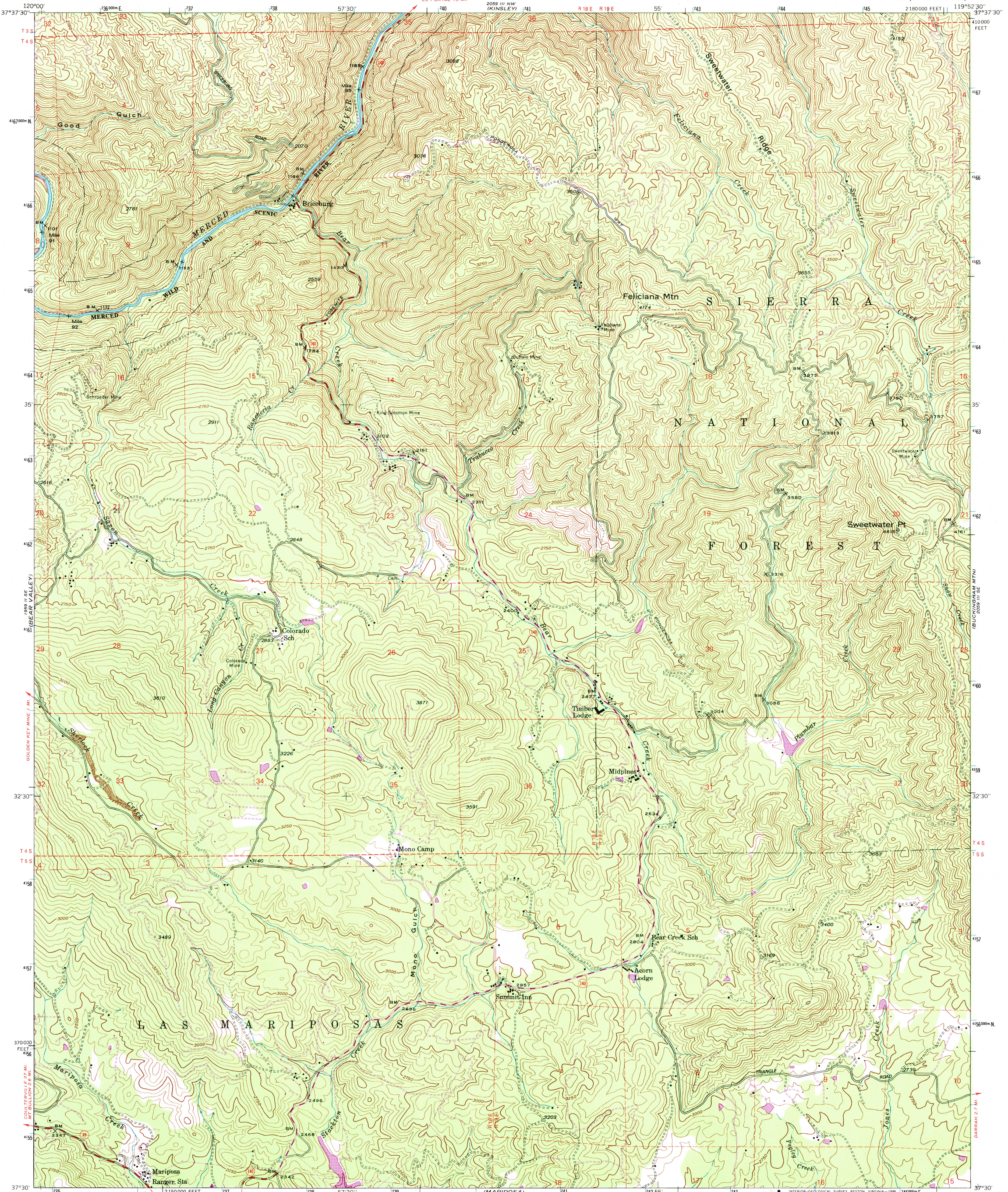


YOSEMITE NATL. PARK 29 MI.
EL. PORTAL 15 MI.



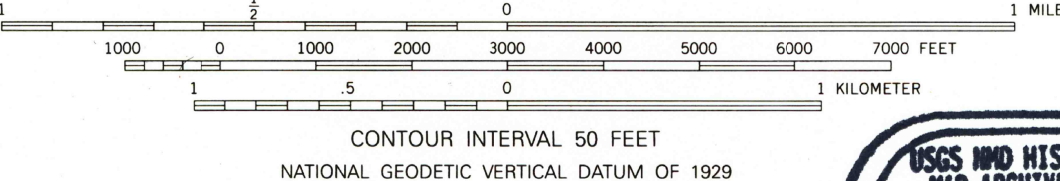
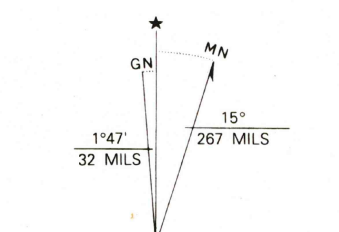
Produced by the United States Geological Survey
Control by USGS and NOS/NOAA

Compiled from imagery taken 1945. Photoinspected using
imagery dated 1992; no major culture or drainage changes
observed. PLS and survey control current as of 1947
Boundaries and names revised 1994

North American Datum of (NAD 27). Projection and
10000-foot ticks: California Coordinate System, zone 3
(Transverse Mercator)

Blue 1000-meter Universal Transverse Mercator ticks, zone 11
North American Datum of 1983 (NAD 83) is shown by dashed
corner ticks. The values of the shift between NAD 27 and NAD 83
for 7.5-minute intersections are obtainable from National Geodetic
Survey NADCON software

There may be private inholdings within the boundaries of the
National or State reservations shown on this map
Where omitted, land lines have not been established
Certain land lines are omitted because of insufficient data



CONTOUR INTERVAL 50 FEET
NATIONAL GEODETIC VERTICAL DATUM OF 1929

USGS AND HISTORICAL
MAP ARCHIVES
FEB 13 1995
REC'D FILE COPY



ROAD CLASSIFICATION

Primary highway, hard surface	Light-duty road, hard or improved surface
Secondary highway, hard surface	Unimproved road
Interstate Route	U. S. Route
	State Route

THIS MAP COMPLIES WITH NATIONAL MAP ACCURACY STANDARDS
FOR SALE BY U.S. GEOLOGICAL SURVEY
DENVER, COLORADO 80225, OR RESTON, VIRGINIA 22092
A FOLDER DESCRIBING TOPOGRAPHIC MAPS AND SYMBOLS IS AVAILABLE ON REQUEST

Revisions shown in purple compiled from aerial photographs
taken 1978 and other source data. This information not
field checked. Map edited 1981

FELICIANA MTN., CA
37119-E8TF-024
1992
DMA 2059 III SW-SERIES V895