

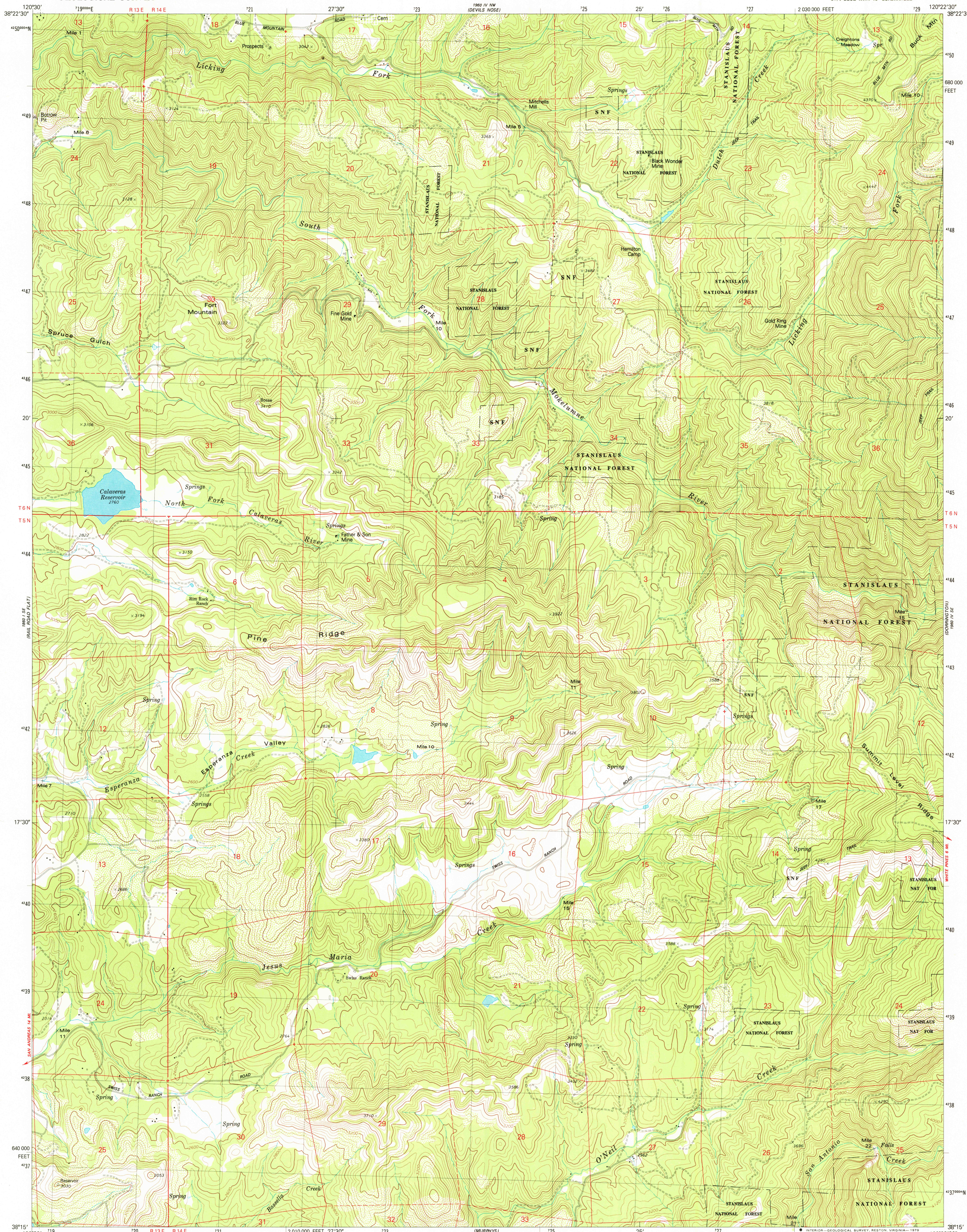
1960 I NE  
1960 I NE  
1960 I NE

UNITED STATES  
DEPARTMENT OF THE INTERIOR  
GEOLOGICAL SURVEY

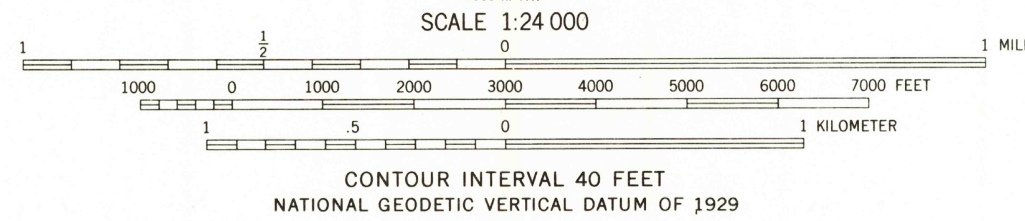
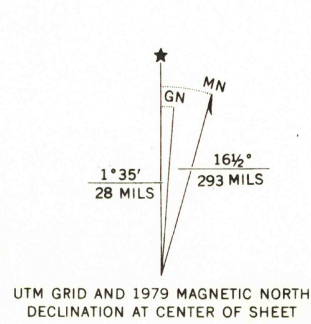


FORT MOUNTAIN QUADRANGLE  
CALIFORNIA-CALAVERAS CO.  
7.5 MINUTE SERIES (TOPOGRAPHIC)  
SW/4 BLUE MTN. 15' QUADRANGLE

1960 I NE  
1960 I NE  
1960 I NE



Mapped, edited, and published by the Geological Survey  
Control by USGS and NOS/NOAA  
Topography by photogrammetric methods from aerial  
photographs taken 1973. Field checked 1974. Map edited 1979  
Projection and 10,000-foot grid ticks: California coordinate  
system, zone 3 (Lambert conformal conic)  
1000-meter Universal Transverse Mercator grid, zone 10  
1927 North American Datum  
To place on the predicted North American Datum 1983  
move the projection lines 13 meters north and  
89 meters east as shown by dashed corner ticks  
Fine red dashed lines indicate selected fence and field lines where  
generally visible on aerial photographs. This information is unchecked  
There may be private inholdings within the boundaries of  
the National or State reservations shown on this map



THIS MAP COMPLIES WITH NATIONAL MAP ACCURACY STANDARDS  
FOR SALE BY U. S. GEOLOGICAL SURVEY, DENVER, COLORADO 80225, OR RESTON, VIRGINIA 22092  
A FOLDER DESCRIBING TOPOGRAPHIC MAPS AND SYMBOLS IS AVAILABLE ON REQUEST



ROAD CLASSIFICATION  
Primary highway, hard surface  
Secondary highway, hard surface  
Light-duty road, hard or improved surface  
Unimproved road  
Interstate Route  
U. S. Route  
State Route  
USGS  
Historical File  
Topographic Division  
FORT MOUNTAIN, CALIF.  
SW/4 BLUE MTN. 15' QUADRANGLE  
N3815-W12022.5/7.5  
1979  
DMA 1960 IV SW-SERIES V895

JUL 30 1980