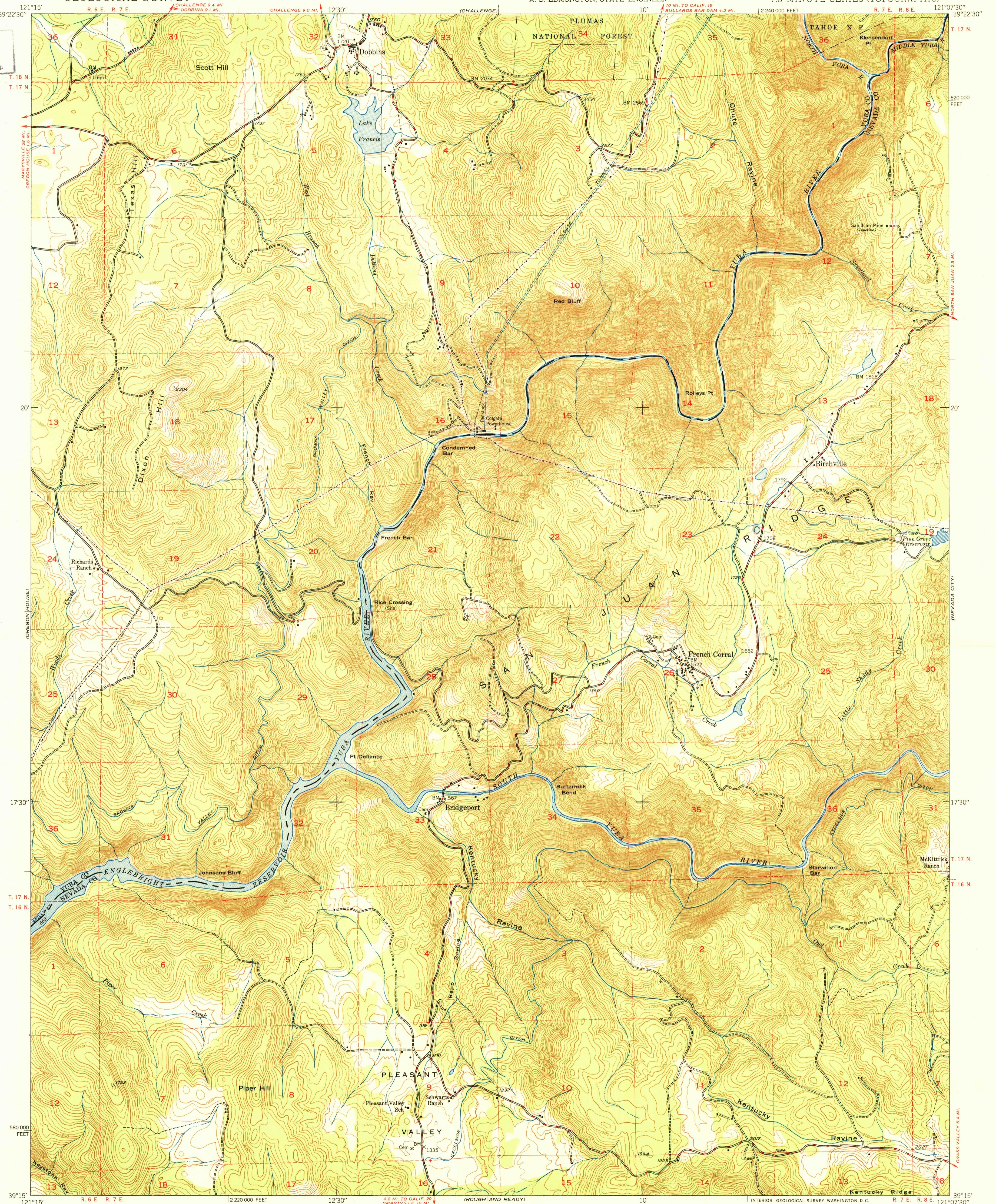
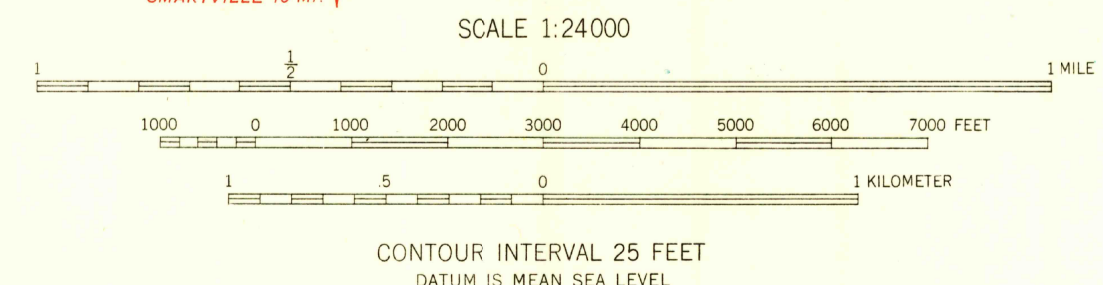


U.S.G.S.
FILE COPY
Inspection and Editing.



Mapped by Fairchild Aerial Surveys, Inc.
Field inspected, edited, and published by the Geological Survey
Control by Fairchild Aerial Surveys, Inc.,
USGS, and USC&GS
Topography from aerial photographs by stereoplano-graph methods
Aerial photographs taken 1946-1947. Field check 1948
Polyconic projection. 1927 North American datum
10,000-foot grid based on California coordinate system,
zone 2
Dashed land lines indicate approximate location
Fairchild triangulation shown by unlabeled located object symbol

TRUE NORTH
MAGNETIC NORTH
APPROXIMATE MEAN
DECLINATION, 1948



USGS
Historical File
Topographic Division

ROAD CLASSIFICATION
HARD-SURFACE ALL WEATHER ROADS
Heavy-duty — 4 LANE 16 LANE
Medium-duty — 4 LANE 16 LANE
Loose-surface, graded, or narrow hard-surface — — —
U.S. Route
State Route
IMPROVED DIRT
Unimproved dirt

U.S.G.S.
FILE COPY
Inspection and Editing.

FRENCH CORRAL, CALIF.
N3915-W12107.5/7.5
EDITION OF 1950

FOR SALE BY U. S. GEOLOGICAL SURVEY, FEDERAL CENTER, DENVER, COLORADO OR WASHINGTON 25, D. C.
A FOLDER DESCRIBING TOPOGRAPHIC MAPS AND SYMBOLS IS AVAILABLE ON REQUEST

OCT 2 1950 3235