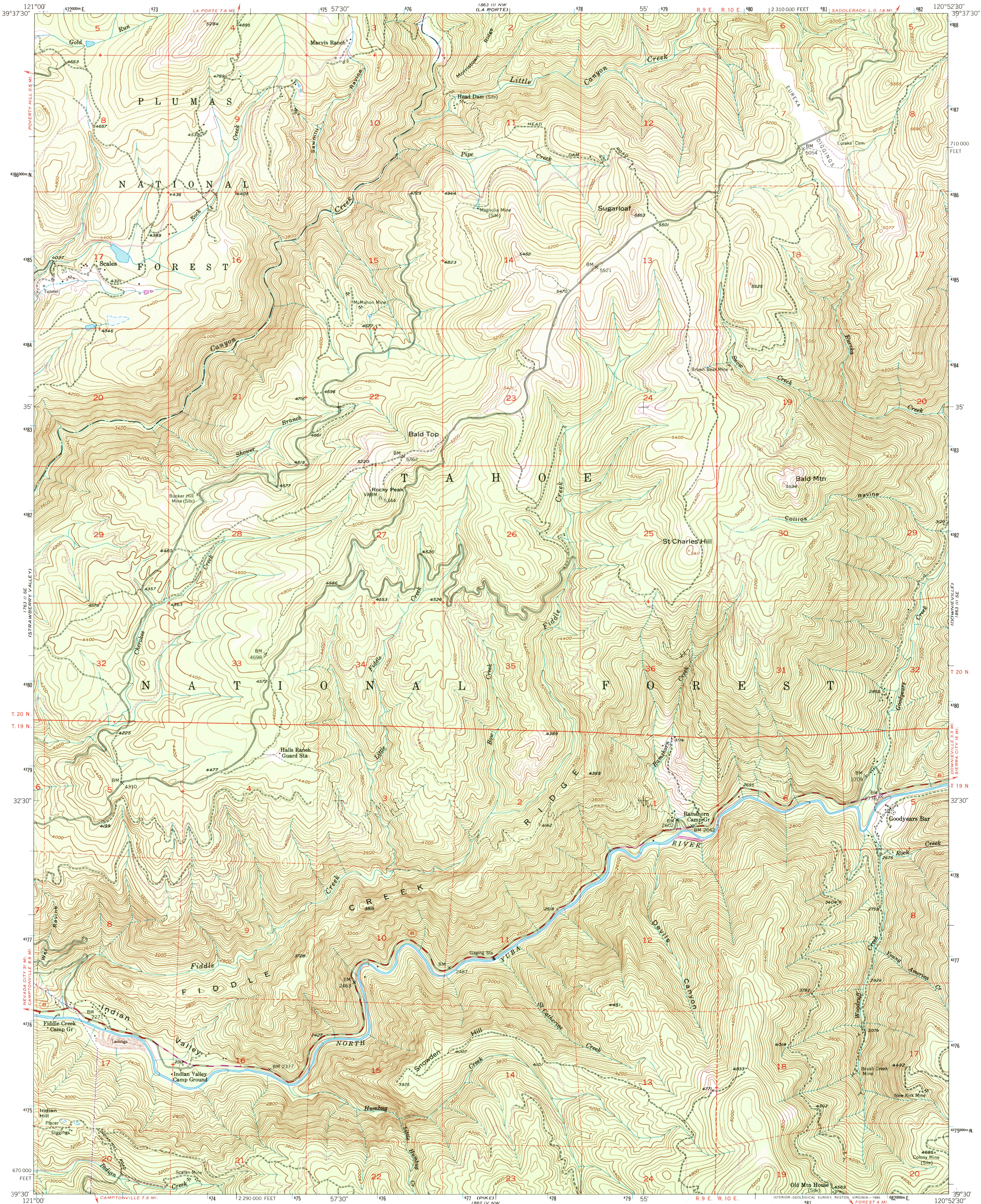
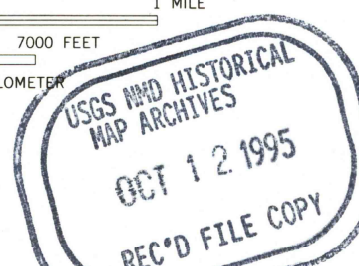
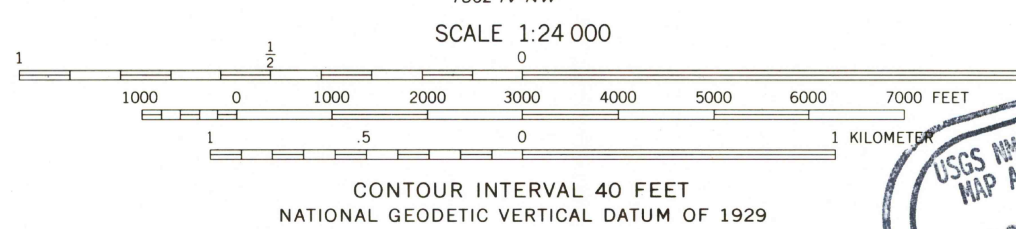
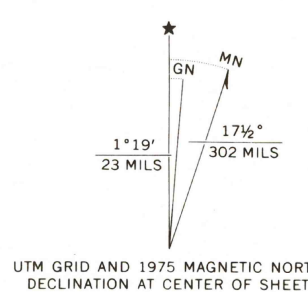


UNITED STATES  
DEPARTMENT OF THE INTERIOR  
GEOLOGICAL SURVEY

GOODYEARS BAR QUADRANGLE  
CALIFORNIA-SIERRA CO.  
7.5 MINUTE SERIES (TOPOGRAPHIC)



Produced by the United States Geological Survey in cooperation with California Department of Water Resources  
Control by USGS and NOS/NOAA  
Compiled from aerial photographs taken 1946. Field checked 1951  
North American Datum of 1927 (NAD 27). Projection and 10,000-foot ticks: California Coordinate System, zone 2 (Lambert Conformal Conic)  
Blue 1000-meter Universal Transverse Mercator ticks, zone 10  
North American Datum of 1983 (NAD 83) is shown by dashed corner ticks. The values of the shift between NAD 27 and NAD 83 for 7.5-minute intersections are obtainable from National Geodetic Survey NADCON software  
There may be private inholdings within the boundaries of the National or State reservations shown on this map



ROAD CLASSIFICATION  
Primary highway, hard surface  
Secondary highway, hard surface  
Unimproved road  
Interstate Route  
U. S. Route  
State Route

GOODYEARS BAR, CA  
39120-EB-TF-024

1951  
PHOTOREVISED 1975  
DMA 1863 III SW-SERIES V895

FOR SALE BY U. S. GEOLOGICAL SURVEY, DENVER, COLORADO 80225, OR RESTON, VIRGINIA 22092  
A FOLDER DESCRIBING TOPOGRAPHIC MAPS AND SYMBOLS IS AVAILABLE ON REQUEST

