

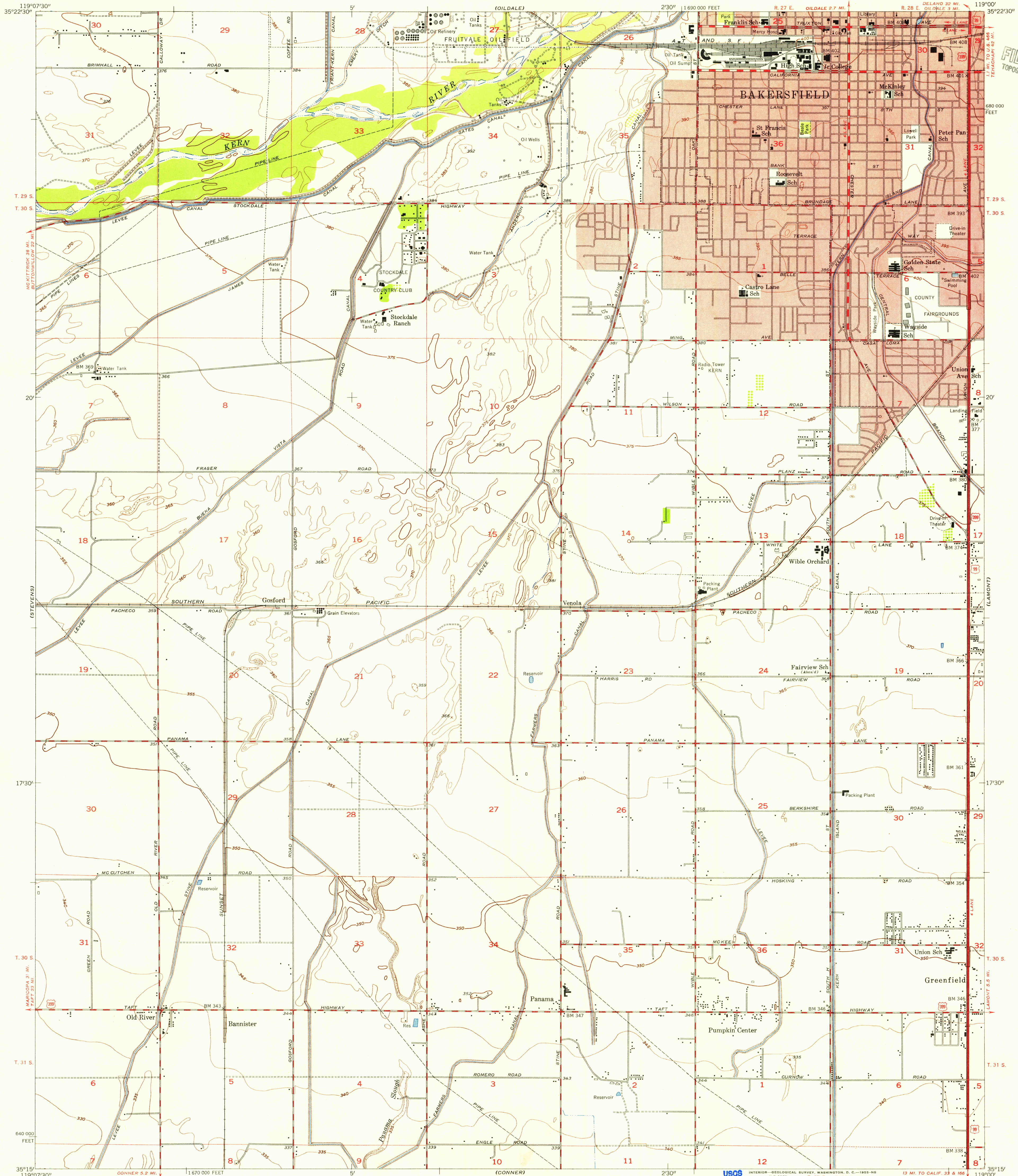
PROSEDALE

UNITED STATES  
DEPARTMENT OF THE INTERIOR  
GEOLOGICAL SURVEY

STATE OF CALIFORNIA  
GOODWIN J. KNIGHT, GOVERNOR  
FRANK B. DURKEE, DIRECTOR OF PUBLIC WORKS  
A. D. EDMONSTON, STATE ENGINEER

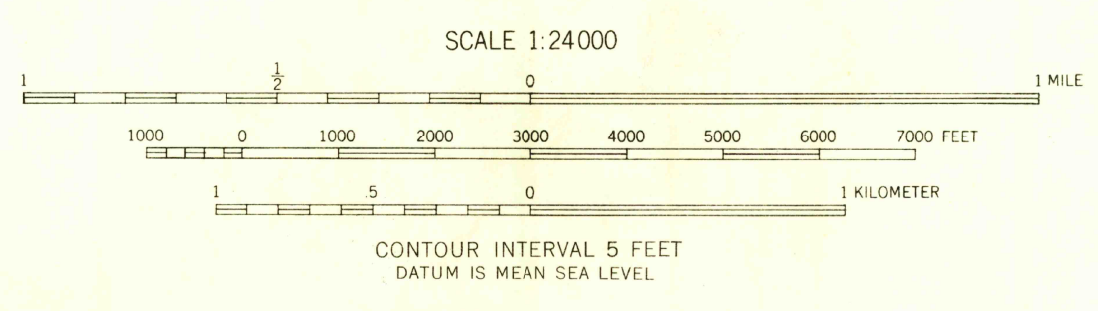
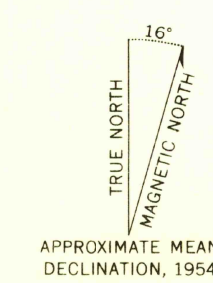
GOSFORD QUADRANGLE  
CALIFORNIA—KERN CO.  
7.5 MINUTE SERIES (TOPOGRAPHIC)  
SE/4 BAKERSFIELD WEST 15' QUADRANGLE

WEEB PATCH



U.S.G.S.  
FILE COPY  
TOPOGRAPHIC DIVISION

Mapped, edited, and published by the Geological Survey  
Control by USGS and USC&GS  
Culture and drainage compiled from aerial photographs taken 1952. Topography by plane-table surveys 1954  
Polyconic projection. 1927 North American datum 10,000-foot grid based on California coordinate system, zone 5  
Red tint indicates areas in which only landmark buildings are shown  
Dotted land lines were established by private survey



USGS  
Historical File  
Topographic Division

ROAD CLASSIFICATION  
Heavy-duty ——— Light-duty ———  
Medium-duty ——— Unimproved dirt ———  
U. S. Route (circle with number) State Route (circle with number)



U.S.G.S.  
FILE COPY  
TOPOGRAPHIC DIVISION  
GOSFORD, CALIF.  
SE/4 BAKERSFIELD WEST 15' QUADRANGLE  
N 3515—W 11900/7.5  
1954

THIS MAP COMPLIES WITH NATIONAL MAP ACCURACY STANDARDS  
FOR SALE BY U. S. GEOLOGICAL SURVEY, FEDERAL CENTER, DENVER, COLORADO OR WASHINGTON 25, D. C.  
A FOLDER DESCRIBING TOPOGRAPHIC MAPS AND SYMBOLS IS AVAILABLE ON REQUEST

1955  
DEC 5 1954  
4565