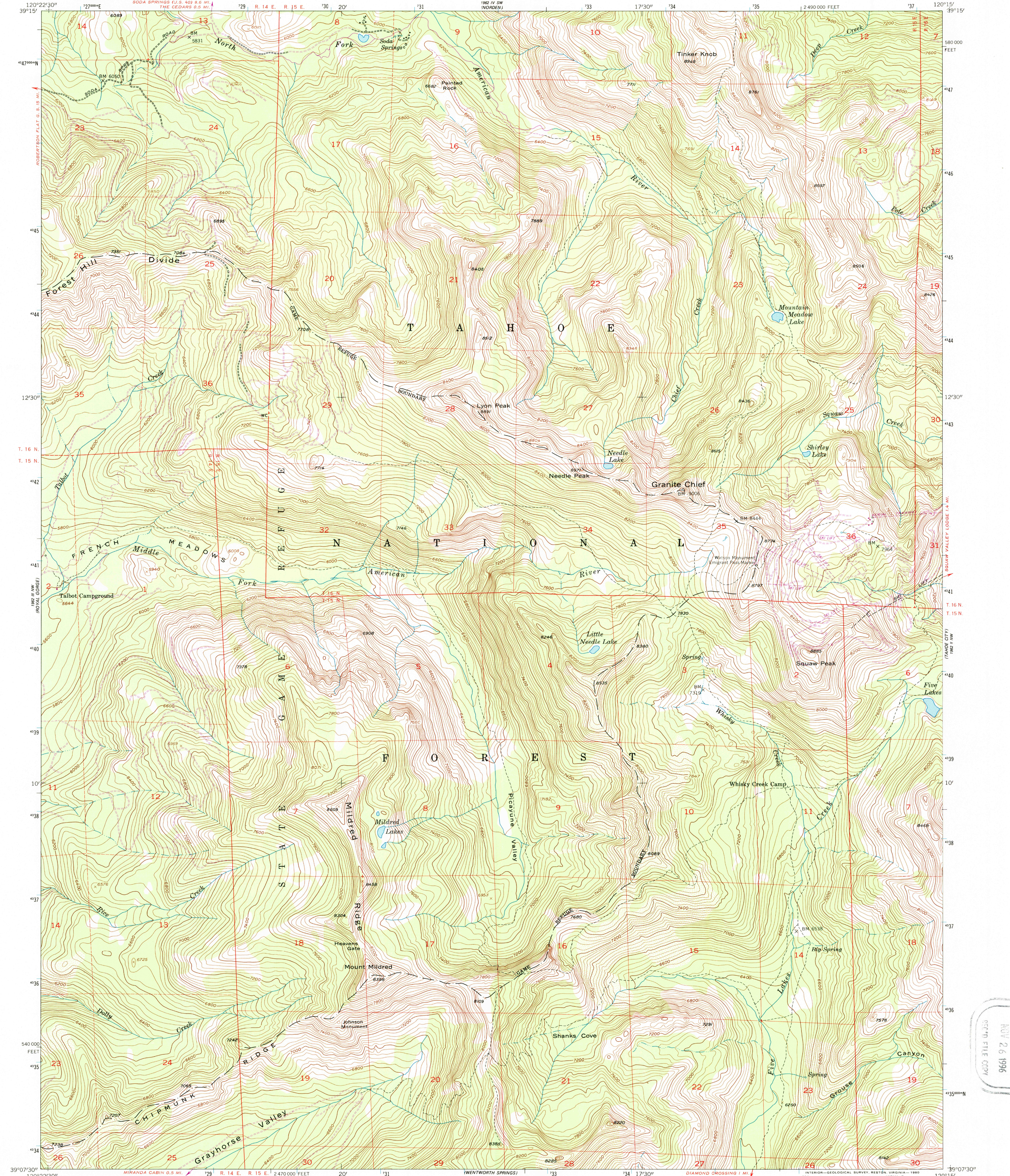


UNITED STATES
DEPARTMENT OF THE INTERIOR
GEOLOGICAL SURVEY

GRANITE CHIEF QUADRANGLE
CALIFORNIA-PLACER CO
7.5 MINUTE SERIES (TOPOGRAPHIC)
NE/4 GRANITE CHIEF 15' QUADRANGLE



Mapped, edited, and published by the Geological Survey

Control by USGS and NOS/NOAA

Topography from aerial photographs by multiplex methods

Aerial photographs taken 1948. Field check 1953

Polyconic projection. 1927 North American datum

10,000-foot grid based on California coordinate system, zone 2

1000-meter Universal Transverse Mercator grid ticks,

zone 10, shown in blue

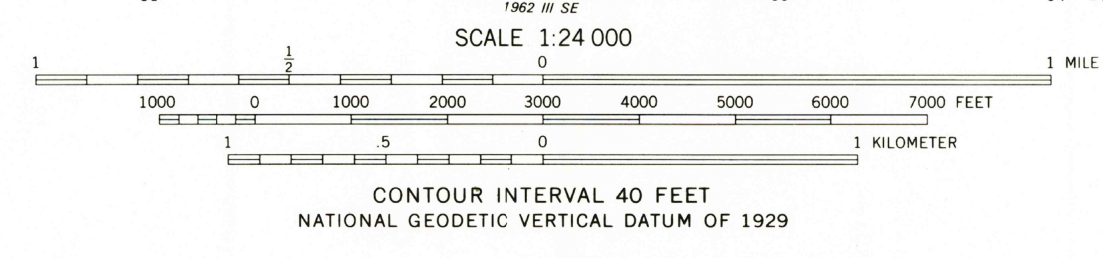
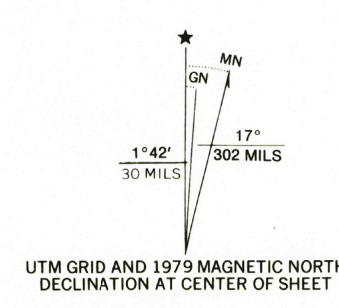
To place on the predicted North American Datum 1983

move the projection lines 14 meters north and

88 meters east as shown by dashed corner ticks

There may be private inholdings within the boundaries of

the National or State reservations shown on this map



THIS MAP COMPLIES WITH NATIONAL MAP ACCURACY STANDARDS
FOR SALE BY U. S. GEOLOGICAL SURVEY, DENVER, COLORADO 80225, OR RESTON, VIRGINIA 22092
A FOLDER DESCRIBING TOPOGRAPHIC MAPS AND SYMBOLS IS AVAILABLE ON REQUEST



QUADRANGLE LOCATION

ROAD CLASSIFICATION		
Heavy-duty	4 LANE 6 LANE	Light-duty
Medium-duty	4 LANE 6 LANE	Unimproved dirt
U. S. Route		State Route

GRANITE CHIEF, CALIF.
NE/4 GRANITE CHIEF 15' QUADRANGLE
N3907.5-W12015.7/5

1953
PHOTOREVISED 1979
DMA 1982 III NE-SERIES V895

