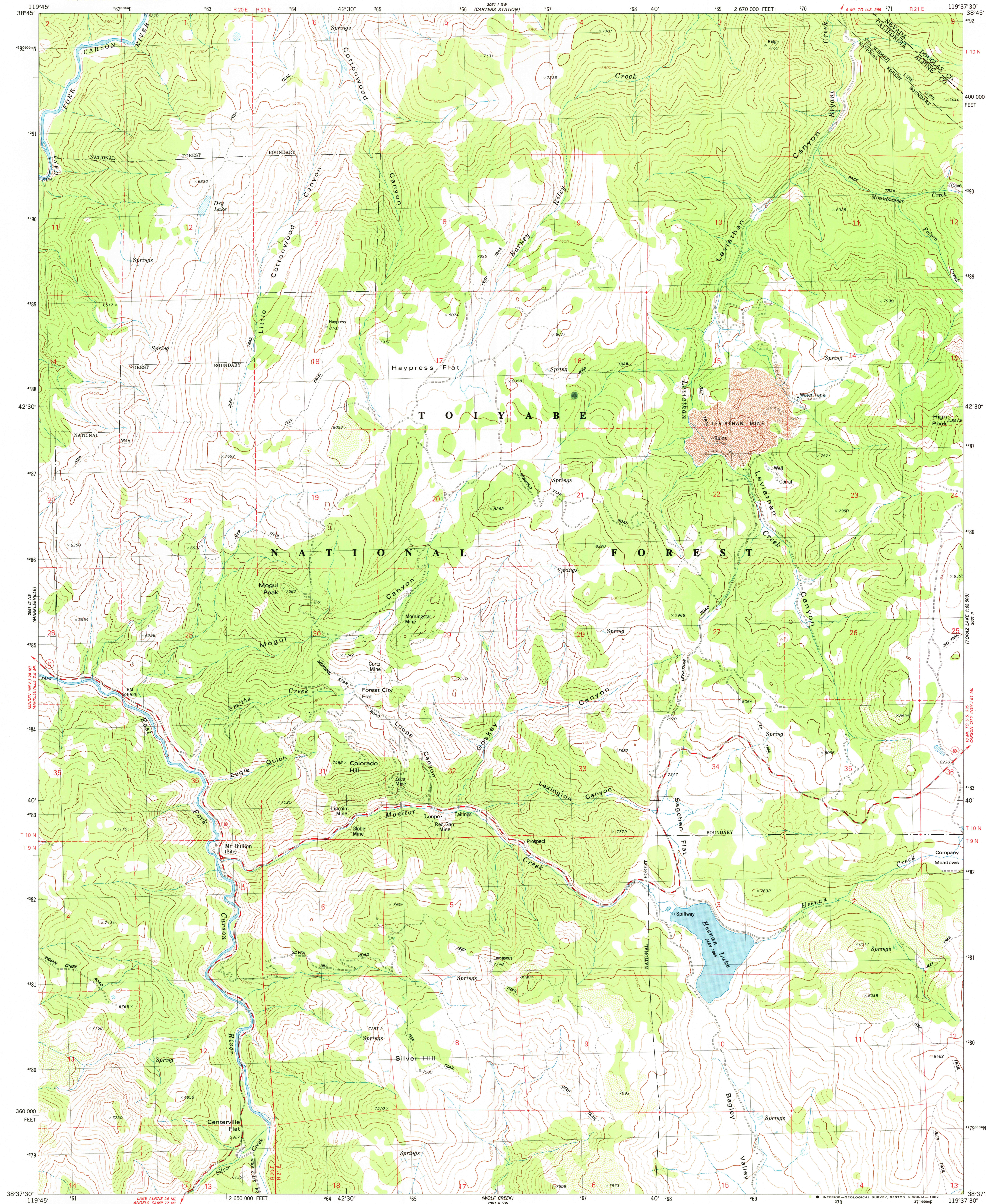


UNITED STATES  
DEPARTMENT OF THE INTERIOR  
GEOLOGICAL SURVEY

HEENAN LAKE QUADRANGLE  
CALIFORNIA-NEVADA  
7.5 MINUTE SERIES (TOPOGRAPHIC)  
NW/4 TOPAZ LAKE 15' QUADRANGLE



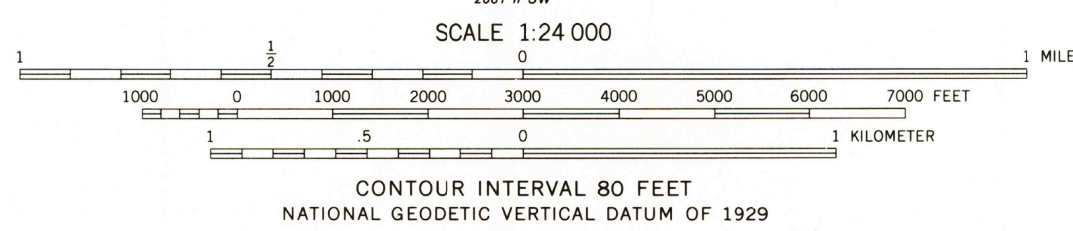
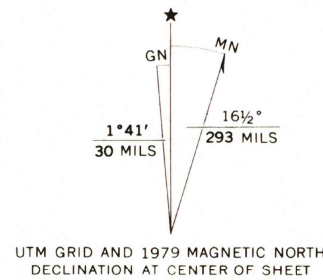
Mapped, edited, and published by the Geological Survey

Control by USGS and NOS/NOAA

Topography by photogrammetric methods from aerial  
photographs taken 1973. Field checked 1974  
Map edited 1979

Projection and 10,000-foot grid ticks: California coordinate  
system, zone 2 (Lambert conformal conic)  
1000-meter Universal Transverse Mercator grid, zone 11  
1927 North American Datum  
To place on the predicted North American Datum 1983  
move the projection lines 13 meters north and  
87 meters east as shown by dashed corner ticks

There may be private inholdings within the boundaries of  
the National or State reservations shown on this map



ROAD CLASSIFICATION		
Primary highway, hard surface	Light-duty road, hard or improved surface	
Secondary highway, hard surface	Unimproved road	
Interstate Route	U. S. Route	State Route



HEENAN LAKE, CALIF.-NEV.  
NW/4 TOPAZ LAKE 15' QUADRANGLE  
N3837.5-W11937.5/7.5

1979

DMA 2061 II NW-SERIES V985

THIS MAP COMPLIES WITH NATIONAL MAP ACCURACY STANDARDS  
FOR SALE BY U. S. GEOLOGICAL SURVEY, DENVER, COLORADO 80225, OR RESTON, VIRGINIA 22092  
A FOLDER DESCRIBING TOPOGRAPHIC MAPS AND SYMBOLS IS AVAILABLE ON REQUEST

JUL 7 1982

CP200