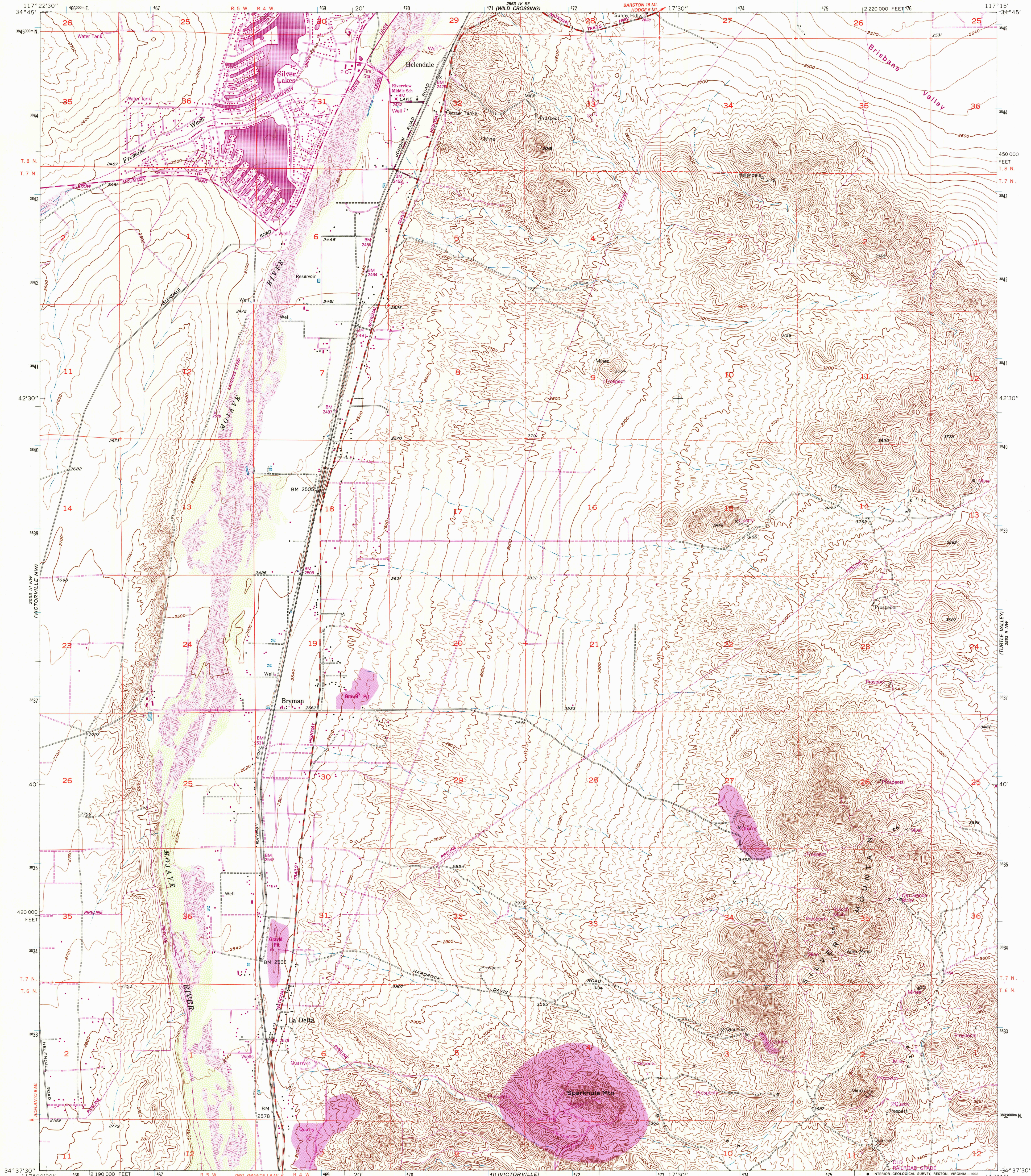


2553 III NW  
(ASTLE RANCH)

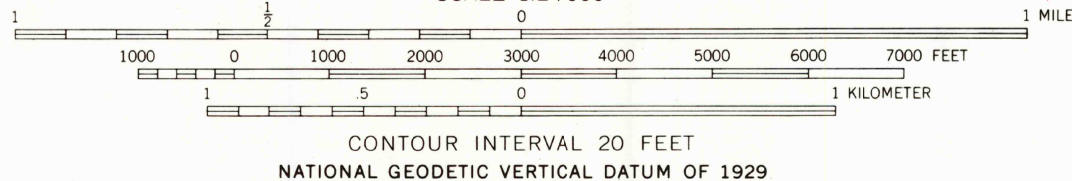
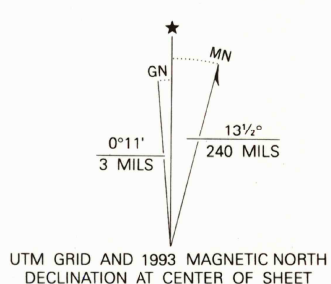
2553 I SW  
(PCOBB)

UNITED STATES  
DEPARTMENT OF THE INTERIOR  
GEOLOGICAL SURVEY

HELENDALE QUADRANGLE  
CALIFORNIA-SAN BERNARDINO CO  
7.5 MINUTE SERIES (TOPOGRAPHIC)



Produced by the United States Geological Survey  
Control by USGS and NOS/NOAA  
Compiled from aerial photographs taken 1952. Information shown in purple has been updated from aerial photographs taken 1989 and field checked. Map edited 1993. Conflicts may exist between some updated features and previously mapped contours.  
North American Datum of 1927 (NAD 27). Projection and 10,000-foot grid ticks: California Coordinate System, zone 5 (Lambert Conformal Conic). 1000-meter Universal Transverse Mercator grid ticks, zone 11, shown in blue.  
The difference between NAD 27 and North American Datum of 1983 (NAD 83) for 7.5 minute intersections is given in USGS Bulletin 1875. The NAD 83 is shown by dashed corner ticks.  
Fine red dashed lines indicate selected fence and field lines where generally visible on aerial photographs.



- ROAD CLASSIFICATION
- |                                 |   |
|---------------------------------|---|
| Primary highway, hard surface   | Light-duty road, hard or improved surface |
| Secondary highway, hard surface | Unimproved road                           |
| Interstate Route                | U. S. Route                               |
|                                 | State Route                               |

HELENDALE, CALIF.  
34117-F3-TF-024

1956  
REVISED 1993  
DMA 2553 III NE-SERIES V895

THIS MAP COMPLIES WITH NATIONAL MAP ACCURACY STANDARDS  
FOR SALE BY U.S. GEOLOGICAL SURVEY  
DENVER, COLORADO 80225, OR RESTON, VIRGINIA 22092  
A FOLDER DESCRIBING TOPOGRAPHIC MAPS AND SYMBOLS IS AVAILABLE ON REQUEST

2553 I SW  
(ADELANTO)

2553 I SW  
(ADELANTO)