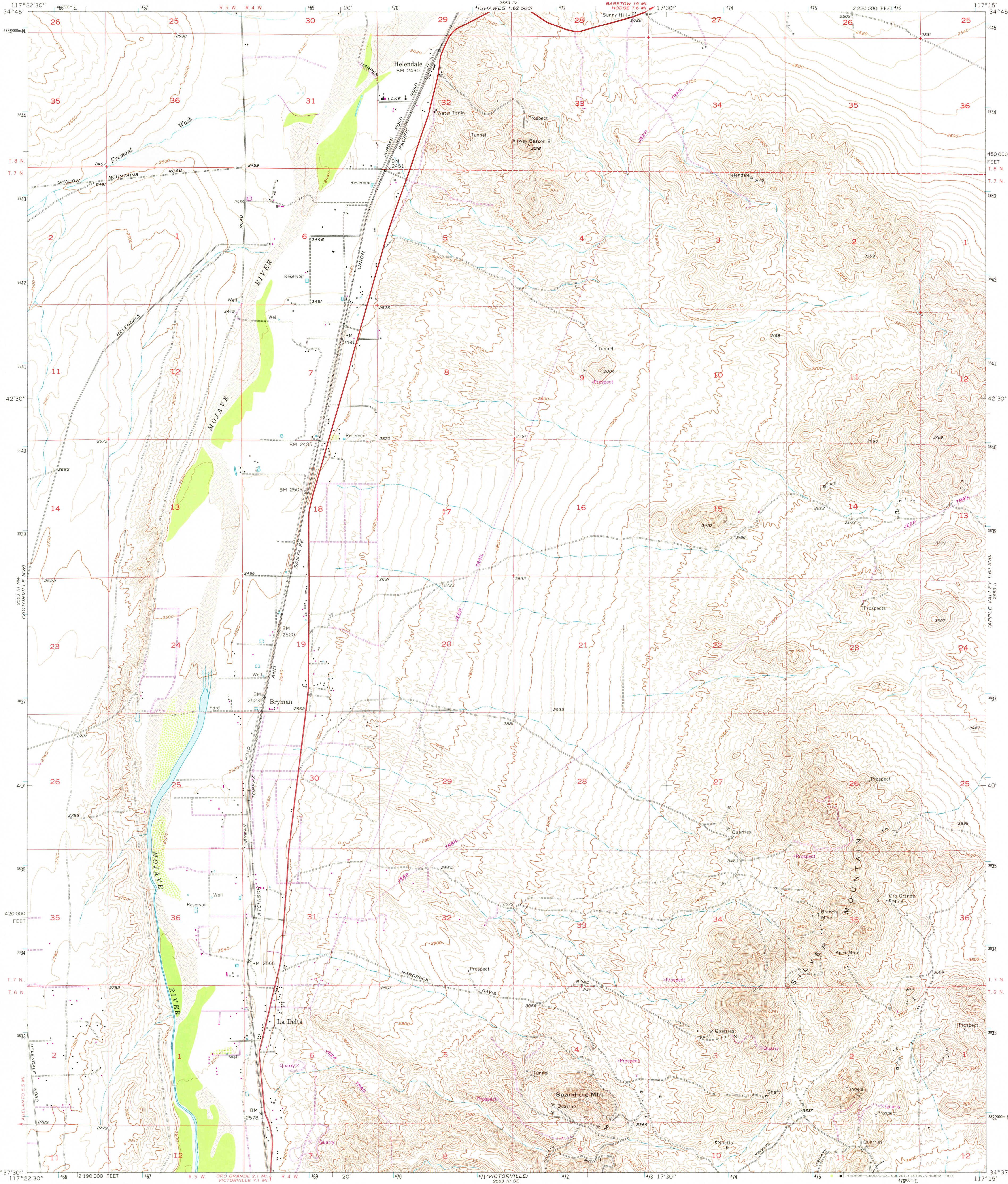


UNITED STATES
DEPARTMENT OF THE INTERIOR
GEOLOGICAL SURVEY

HELENDALE QUADRANGLE
CALIFORNIA—SAN BERNARDINO CO.
7.5 MINUTE SERIES (TOPOGRAPHIC)
NE/4 VICTORVILLE 15' QUADRANGLE



Mapped, edited, and published by the Geological Survey
Control by USGS and USC&GS

Topography from aerial photographs by Wild A-8
Aerial photographs taken 1952. Field check 1956

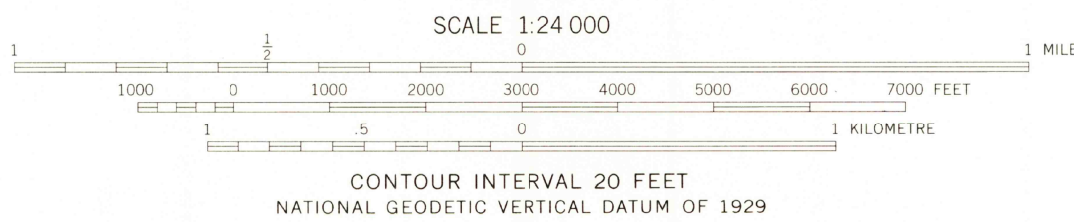
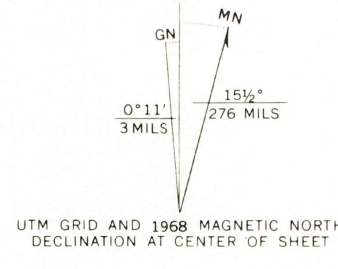
Polycyclic projection. 1927 North American datum
10,000-foot grid based on California coordinate system, zone 5

Dashed land lines indicate approximate locations
Unchecked elevations are shown in brown

1000-metre Universal Transverse Mercator grid ticks,
zone 11, shown in blue

Revised in cooperation with California
Department of Water Resources

Revisions shown in purple compiled from aerial photographs
taken 1968. This information not field checked



ROAD CLASSIFICATION
Heavy-duty ——— Light-duty ———
Unimproved dirt ———

HELENDALE, CALIF.
NE/4 VICTORVILLE 15' QUADRANGLE
N3437.5—W11715.7.5

USGS
HISTORICAL FILE
TOPOGRAPHIC DIVISION

1956
PHOTOREVISED 1968
AMS 2553 III NE—SERIES V895

THIS MAP COMPLIES WITH NATIONAL MAP ACCURACY STANDARDS
FOR SALE BY U. S. GEOLOGICAL SURVEY, DENVER, COLORADO 80225, OR RESTON, VIRGINIA 22092
A FOLDER DESCRIBING TOPOGRAPHIC MAPS AND SYMBOLS IS AVAILABLE ON REQUEST