

(LAKEVIEW)

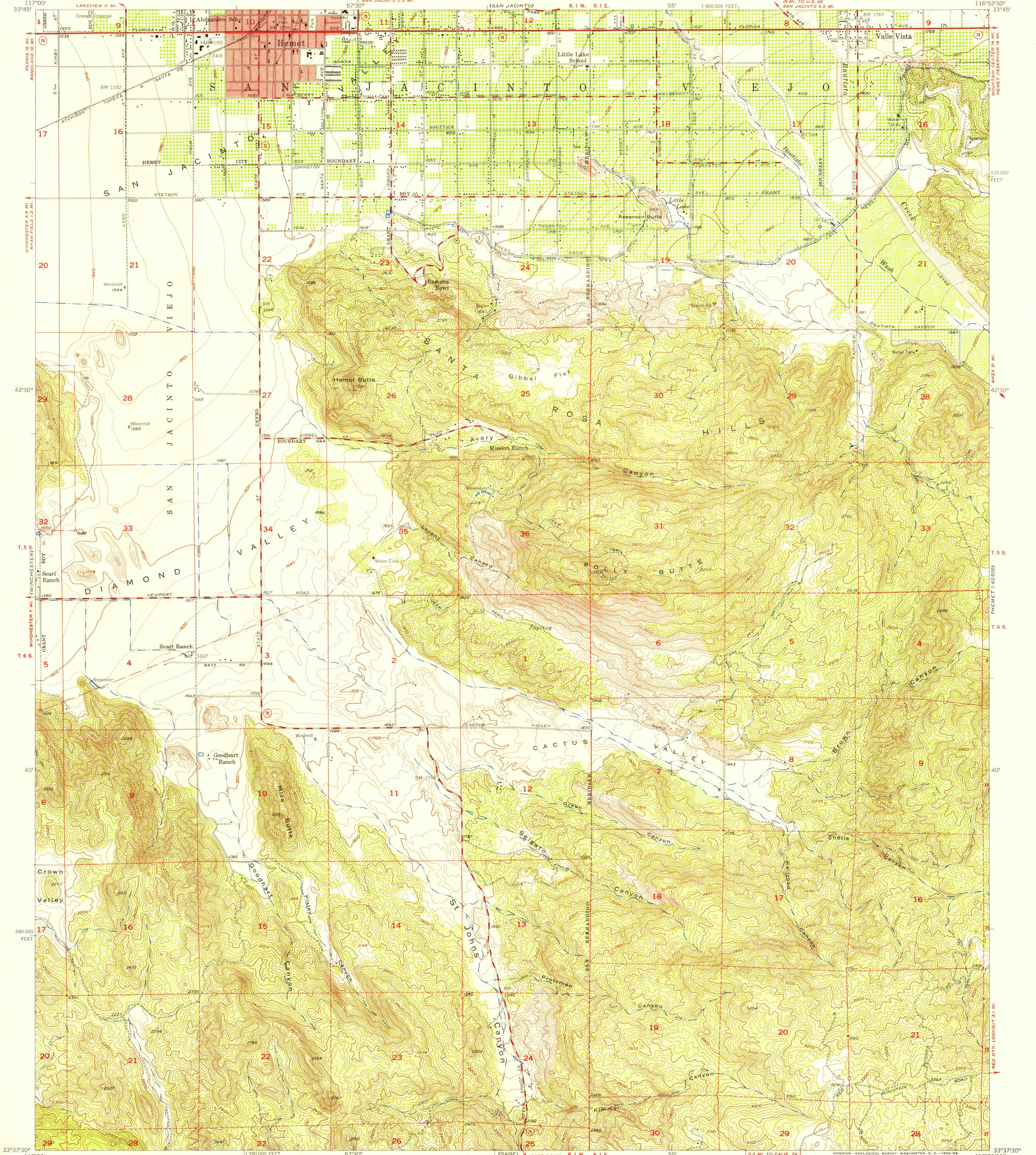
UNITED STATES
DEPARTMENT OF THE INTERIOR
GEOLOGICAL SURVEY

U.S.G.S.
FILE COPY
TOPOGRAPHIC DIVISION

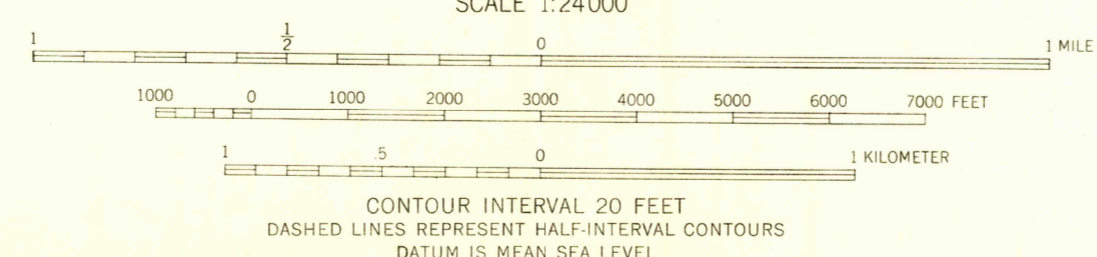
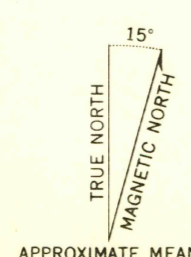
STATE OF CALIFORNIA
GOODWIN J. KNIGHT, GOVERNOR
FRANK B. DURKEE, DIRECTOR OF PUBLIC WORKS
A. D. EDMONSTON, STATE ENGINEER

HEMET QUADRANGLE
CALIFORNIA—RIVERSIDE CO.
7.5 MINUTE SERIES (TOPOGRAPHIC)
NW/4 HEMET 15' QUADRANGLE

(BANNING 162500)



Mapped, edited, and published by the Geological Survey
Control by USGS and USC&GS
Topography from aerial photographs by multiplex methods
and by plane-table surveys 1953. Aerial photographs taken 1951
Polyconic projection. 1927 North American datum
10,000-foot grid based on California coordinate system, zone 6
Dashed land lines indicate approximate locations
Red tint indicates areas in which only landmark buildings are shown
Unchecked elevations are shown in brown



CONTOUR INTERVAL 20 FEET
DASHED LINES REPRESENT HALF-INTERVAL CONTOURS
DATUM IS MEAN SEA LEVEL

USGS
Historical File
Topographic Division

ROAD CLASSIFICATION

Heavy-duty	Light-duty
Medium-duty	Unimproved dirt
U.S. Route	State Route



U.S.G.S.
FILE COPY
TOPOGRAPHIC DIVISION

HEMET, CALIF.
NW/4 HEMET 15' QUADRANGLE
N3337.5-W11652.5/7.5

THIS MAP COMPLIES WITH NATIONAL MAP ACCURACY STANDARDS
FOR SALE BY U.S. GEOLOGICAL SURVEY, FEDERAL CENTER, DENVER, COLORADO OR WASHINGTON 25, D. C.
A FOLDER DESCRIBING TOPOGRAPHIC MAPS AND SYMBOLS IS AVAILABLE ON REQUEST

1953 AUG 2 1955

3715