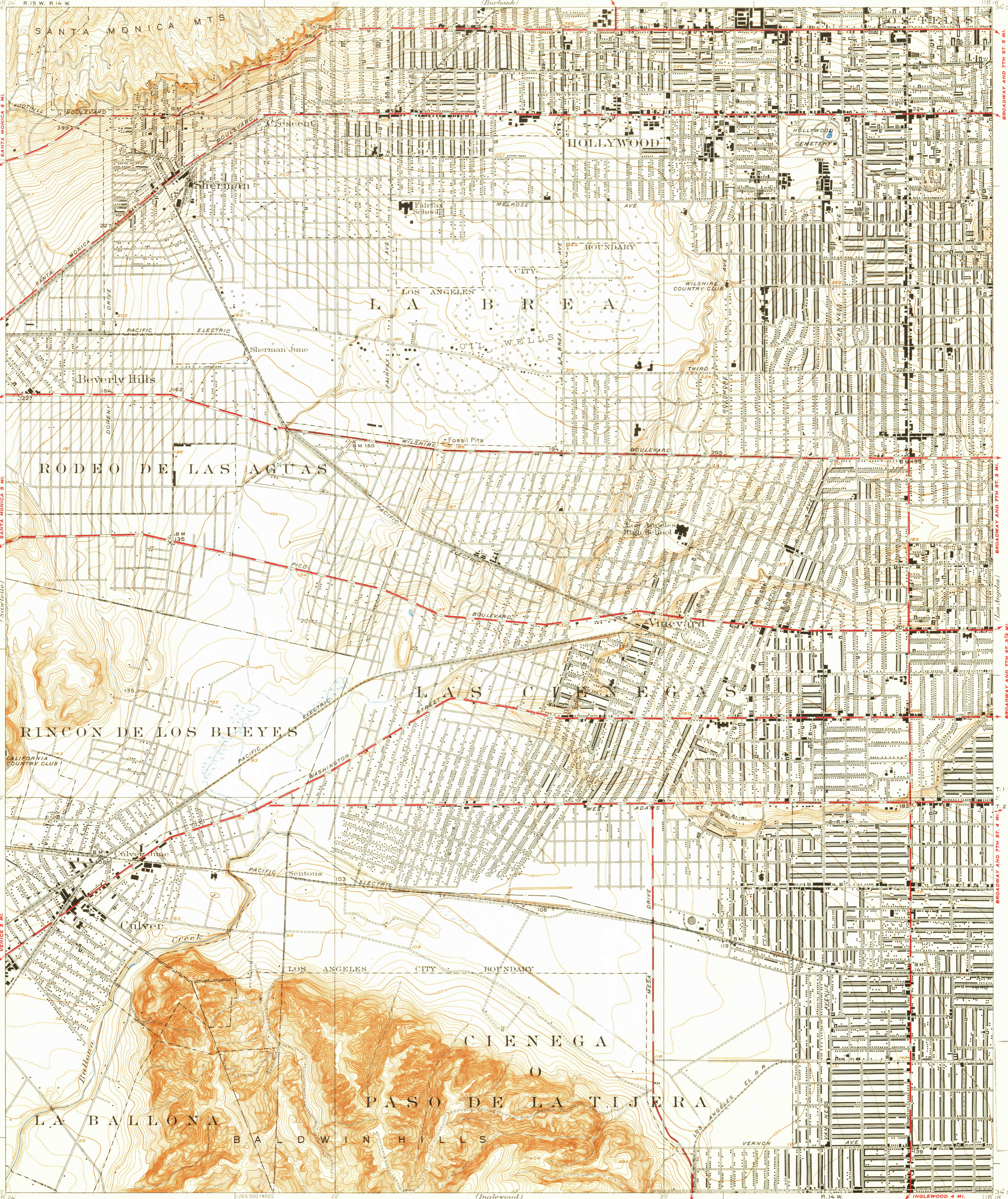


U.S.G.S.
FILE COPY
Topographic and Printing



Topography by E.P. Davis
Control in part by City of Los Angeles
Surveyed in 1923-1924.

(Inglewood)
Scale 30,000
1 Mile
5000 Feet
Contour interval 5 and 25 feet,
changing on the 500 foot contour
Datum is mean sea level

USGS
Historical File
Topographic Division

HOLLYWOOD, CALIF.
Edition of 1926

NOV 16 1944

2030

U.S.G.S.
FILE COPY
Topographic and Printing