

32°52'30" N
115°22'30" W

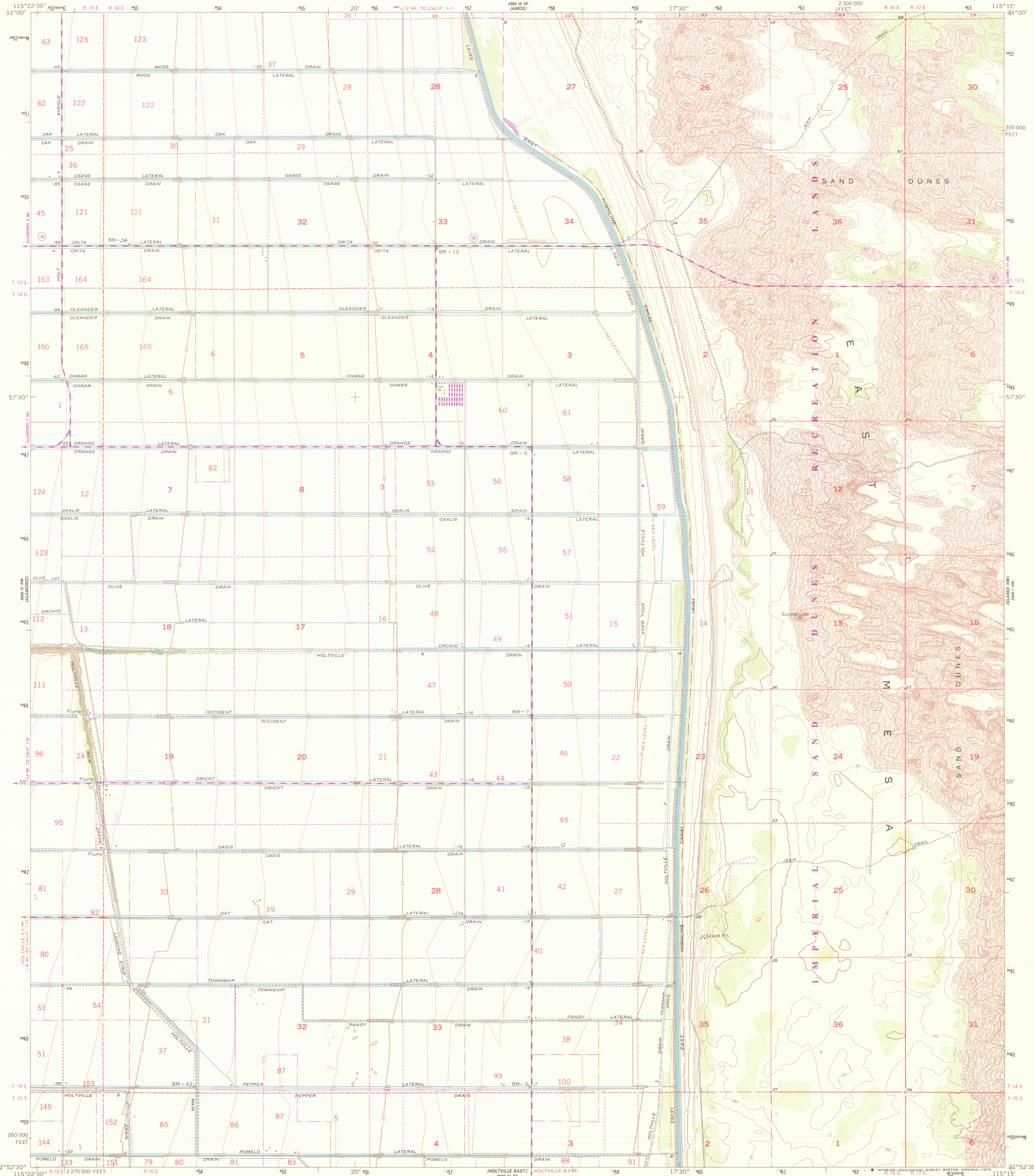
UNITED STATES
DEPARTMENT OF THE INTERIOR
GEOLOGICAL SURVEY



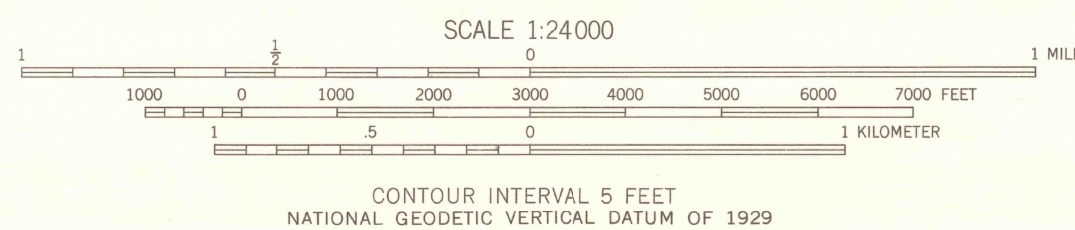
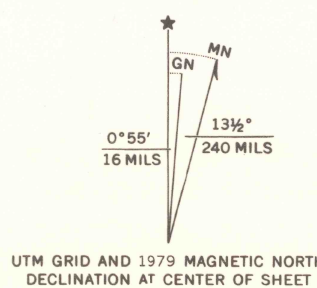
STATE OF CALIFORNIA
DIRECTOR OF WATER RESOURCES

HOLTVILLE NE QUADRANGLE
CALIFORNIA-IMPERIAL CO.
7.5 MINUTE SERIES (TOPOGRAPHIC)

32°52'30" N
115°22'30" W



Mapped, edited, and published by the Geological Survey
Control by USGS, NOS/NOAA and US Bureau of Reclamation
Culture and drainage compiled from aerial photographs
taken 1953. Topography from planetable surveys by
USBR 1936-37 and USGS 1957
Polyconic projection. 1927 North American datum
10,000-foot grid based on California coordinate system,
zone 6
1000-meter Universal Transverse Mercator grid ticks,
zone 11, shown in blue
To place on the predicted North American Datum 1983,
move the projection lines 4 meters south and
75 meters east as shown by dashed corner ticks
There may be private inholdings within the boundaries of
the National or State reservations shown on this map



THIS MAP COMPLIES WITH NATIONAL MAP ACCURACY STANDARDS
FOR SALE BY U. S. GEOLOGICAL SURVEY, DENVER, COLORADO 80225, OR RESTON, VIRGINIA 22092
A FOLDER DESCRIBING TOPOGRAPHIC MAPS AND SYMBOLS IS AVAILABLE ON REQUEST



ROAD CLASSIFICATION
Medium-duty ——— Light-duty ———
Unimproved dirt ———
State Route ———

HOLTVILLE NE, CALIF.
N3252.5-W11515.7.5

1957
PHOTOREVISED 1979
DMA 2948 IV NE-SERIES V995

Revisions shown in purple and woodland compiled by the Geological
Survey from aerial photographs taken 1976 and other source data
This information not field checked. Map edited 1979