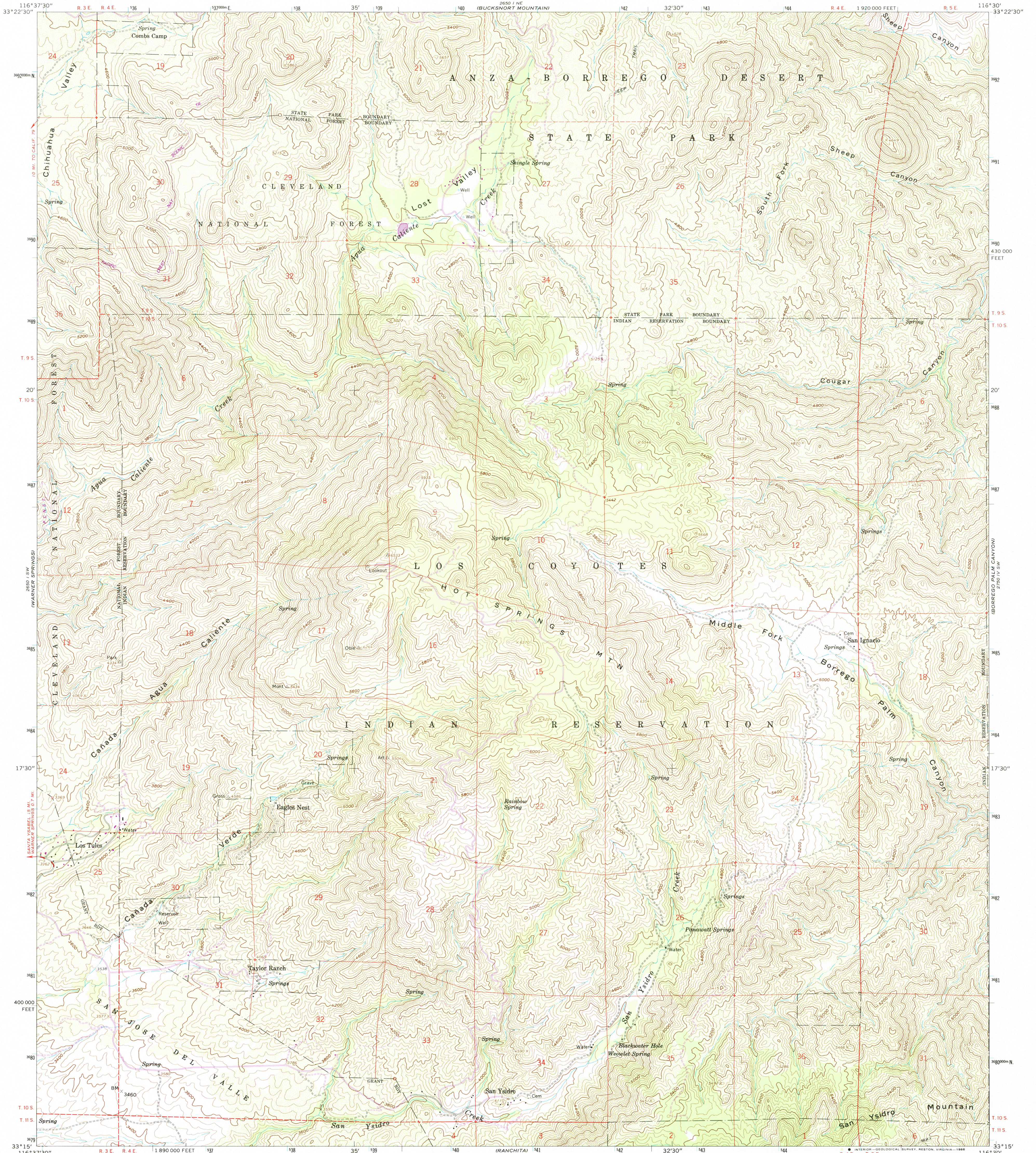


UNITED STATES  
DEPARTMENT OF THE INTERIOR  
GEOLOGICAL SURVEY

HOT SPRINGS MTN. QUADRANGLE  
CALIFORNIA—SAN DIEGO CO.  
7.5 MINUTE SERIES (TOPOGRAPHIC)  
SE 1/4 WARNER SPRINGS 15' QUADRANGLE



Mapped, edited and published by the Geological Survey  
Control by USGS, NOS/NOAA, and USCE

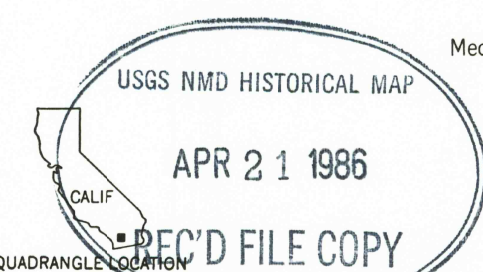
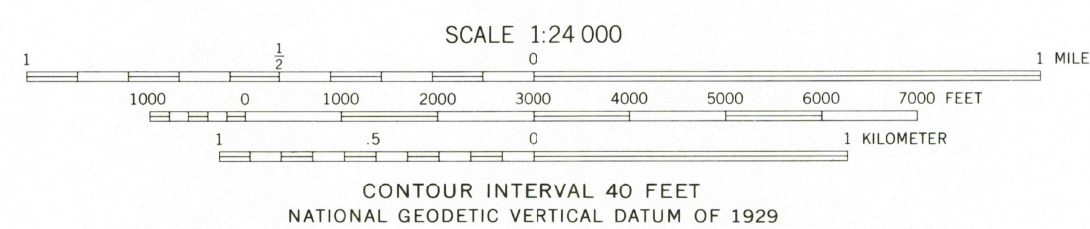
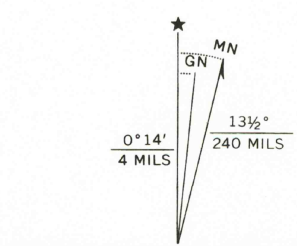
Topography from aerial photographs by photogrammetric methods  
Aerial photographs taken 1955. Field check 1960

Polyconic projection. 1927 North American Datum  
10,000-foot grid based on California coordinate system, zone 6  
1000-meter Universal Transverse Mercator grid ticks,  
zone 11, shown in blue

Dashed land lines indicate approximate locations  
Land lines omitted in T. 9 S.—R. 5 E., and in parts of  
T. 9 S. R. 4 E., T. 10 S.—R. 5 E., because of insufficient data

To place on the predicted North American Datum 1983  
move the projection lines 2 meters south and  
79 meters east as shown by dashed corner ticks

There may be private inholdings within the boundaries  
of the National or State reservations shown on this map



ROAD CLASSIFICATION  
Medium-duty ——— Light-duty ———  
Unimproved dirt ———

HOT SPRINGS MTN., CALIF.  
SE 1/4 WARNER SPRINGS 15' QUADRANGLE  
33116-C5-TF-024

1960  
PHOTOREVISED 1982  
DMA 2650 I SE—SERIES V895

THIS MAP COMPLIES WITH NATIONAL MAP ACCURACY STANDARDS  
FOR SALE BY U. S. GEOLOGICAL SURVEY, DENVER, COLORADO 80225, OR RESTON, VIRGINIA 22092  
A FOLDER DESCRIBING TOPOGRAPHIC MAPS AND SYMBOLS IS AVAILABLE ON REQUEST

Revisions shown in purple and red lines on map  
aerial photographs taken 1980 and other source data  
Partial field check by U. S. Forest Service. Map edited 1982