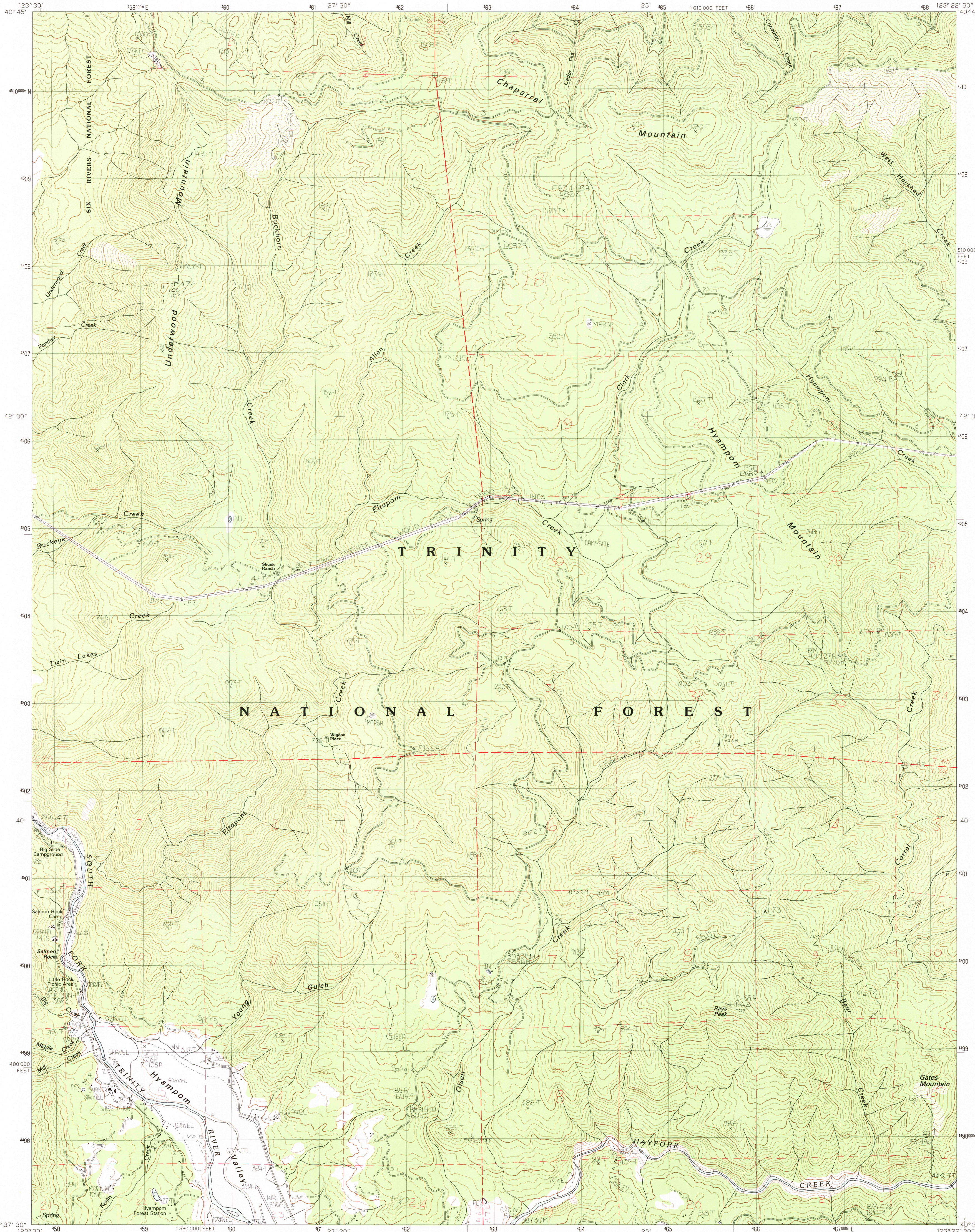


UNITED STATES
DEPARTMENT OF THE INTERIOR
GEOLOGICAL SURVEY

HYAMPOM MTN. QUADRANGLE
CALIFORNIA—TRINITY CO.
7.5 MINUTE SERIES (TOPOGRAPHIC)



PRODUCED BY THE UNITED STATES GEOLOGICAL SURVEY
CONTROL BY USGS, NOS/NOAA
COMPILED FROM AERIAL PHOTOGRAPHS TAKEN 1974
FIELD CHECKED 1976. MAP EDITED 1982
PROJECTION UNIVERSAL TRANSVERSE MERCATOR
GRID: 1000-METER UNIVERSAL TRANSVERSE MERCATOR, ZONE 19
10,000-FOOT STATE GRID TICS CALIFORNIA, ZONE 1
UTM GRID DECLINATION 017 WEST
1980 MAGNETIC NORTH DECLINATION 1730 EAST
VERTICAL DATUM: NATIONAL GEODETIC VERTICAL DATUM OF 1929
HORIZONTAL DATUM: 1927 NORTH AMERICAN DATUM
To place on the predicted North American Datum of 1983,
move the projection lines as shown by dashed corner ticks
(19 meters north / 95 meters east)
There may be private inholdings within the boundaries of any
Federal and State Reservations shown on this map
Certain land lines are omitted because of insufficient data

PROVISIONAL MAP
Produced from original
manuscript drawings. Infor-
mation shown as of date of
field check.

SCALE 1:24 000


1 000 0 1000 2000 3000 4000 5000 6000 7000 8000 9000 10 000
METERS
1 000 0 1000 2000 3000 4000 5000 6000 7000 8000 9000 10 000
FEET

CONTOUR INTERVAL 20 METERS
WITH RIVER CROSSINGS SHOWN AT 2.5 METERS
CONTOUR ELEVATIONS SHOWN TO THE NEAREST 0.1 METER
OTHER ELEVATIONS SHOWN TO THE NEAREST METER
To convert meters to feet multiply by 3.2808
To convert feet to meters multiply by 0.3048

CONTOURS AND ELEVATIONS IN METERS

THIS MAP COMPLIES WITH NATIONAL MAP ACCURACY STANDARDS
FOR SALE BY U.S. GEOLOGICAL SURVEY, DENVER, COLORADO 80225, OR RESTON, VIRGINIA 22092

QUADRANGLE LOCATION



CALIF.

1	2	3	1 Hennessy Peak
			2 Ironside Mtn.
			3 Del Loma
4		5	4 Sims Mountain
			5 Big Bar
			6 Blake Mtn.
6	7	8	7 Hyampom
			8 Halfway Ridge.

ADJOINING 7.5 QUADRANGLE NAMES

ROAD LEGEND

Improved Road
Unimproved Road
Trail
Interstate Route U.S. Route State Route

HYAMPOM MTN., CALIF.
PROVISIONAL EDITION 1982
40123-F4-TM-024

RETURN TO
USGS NHD HISTORICAL MAP ARCHIVES
FEB 2 - 1983
1982