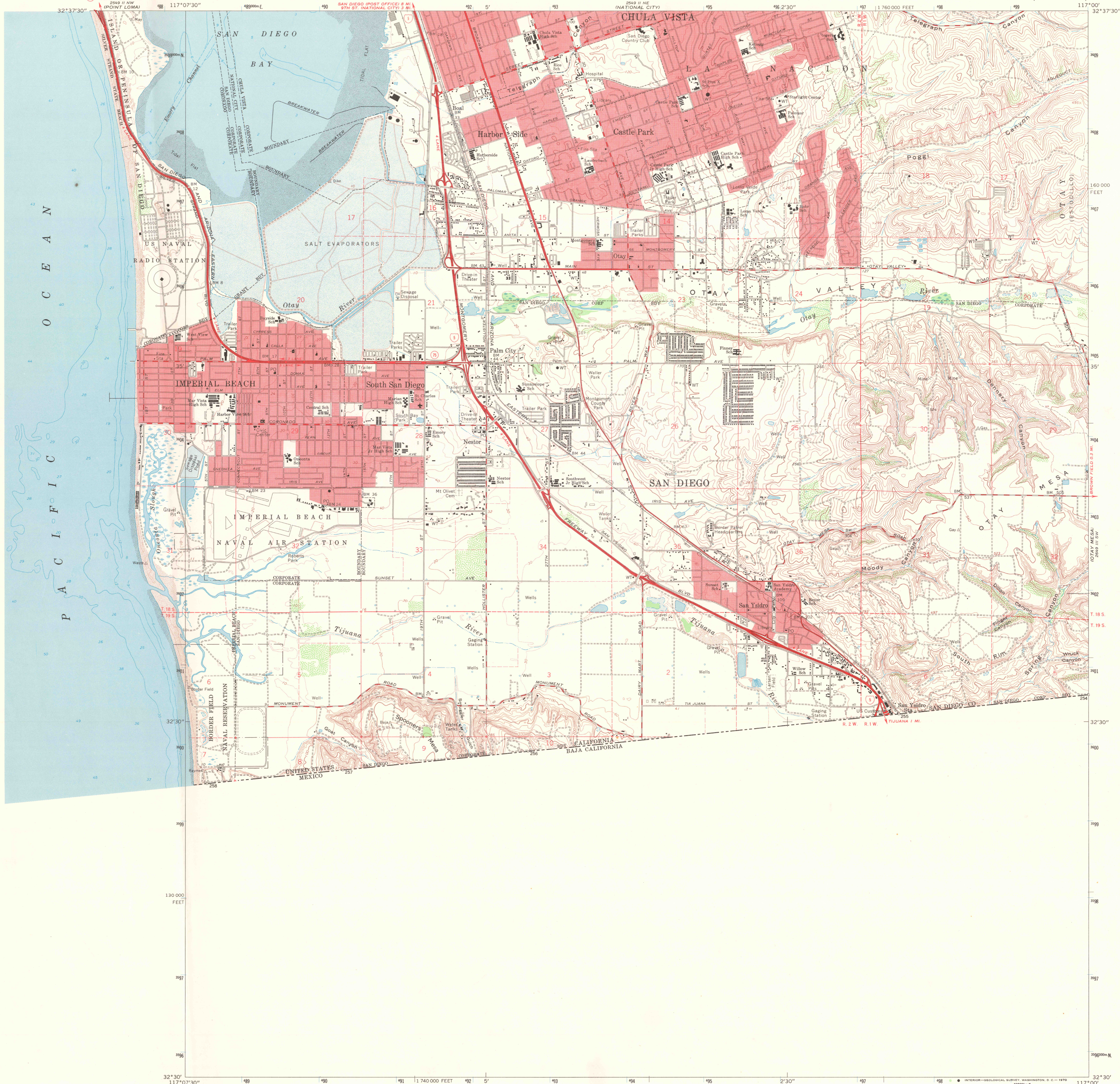
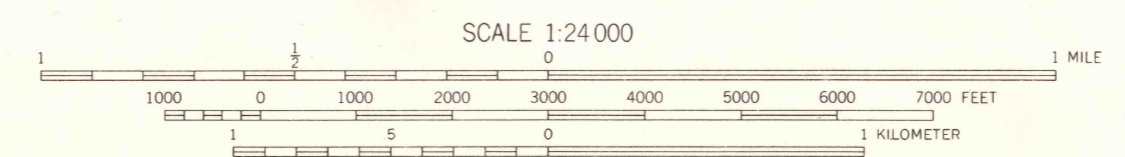
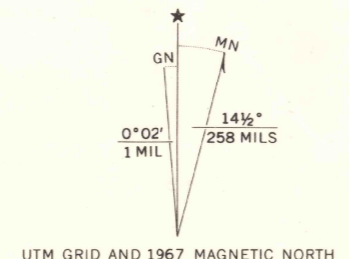


2549 II SE
LAMELLE MOUNTAINS



Mapped, edited, and published by the Geological Survey
Control by USGS and USC&GS
Topography by photogrammetric methods from aerial
photographs taken 1966. Field checked 1967
Supersedes San Ysidro map surveyed 1941, revised 1953
Selected hydrographic data compiled from USC&GS
Chart 5107 (1967) and hydrographic survey (1935)
This information not intended for navigational purposes
Polyconic projection. 1927 North American datum
10,000-foot grid based on California coordinate system, zone 6
1,000-meter Universal Transverse Mercator grid ticks,
zone 11, shown in blue
Red tint indicates areas in which only landmark buildings are shown
Fine red dashed lines indicate selected fence lines



CONTOUR INTERVAL 20 FEET
DOTTED LINES REPRESENT 10-FOOT CONTOURS
DATUM IS MEAN SEA LEVEL
DEPTH CURVES AND SOUNDINGS IN FEET—DATUM IS MEAN LOWER LOW WATER
SHORELINE SHOWN REPRESENTS THE APPROXIMATE LINE OF MEAN HIGH WATER
THE MEAN RANGE OF TIDE IS APPROXIMATELY 4 FEET

THIS MAP COMPLIES WITH NATIONAL MAP ACCURACY STANDARDS
FOR SALE BY U. S. GEOLOGICAL SURVEY, DENVER, COLORADO 80225, OR WASHINGTON, D. C. 20242
A FOLDER DESCRIBING TOPOGRAPHIC MAPS AND SYMBOLS IS AVAILABLE ON REQUEST

ROAD CLASSIFICATION

Heavy-duty	Light-duty
Medium-duty	Unimproved dirt
Interstate Route	State Route



IMPERIAL BEACH, CALIF.
N3230—W11700/7.5
1967

FILE COPY
JUL 14 1970
MAP INFORMATION OFFICE
GEOLOGICAL SURVEY