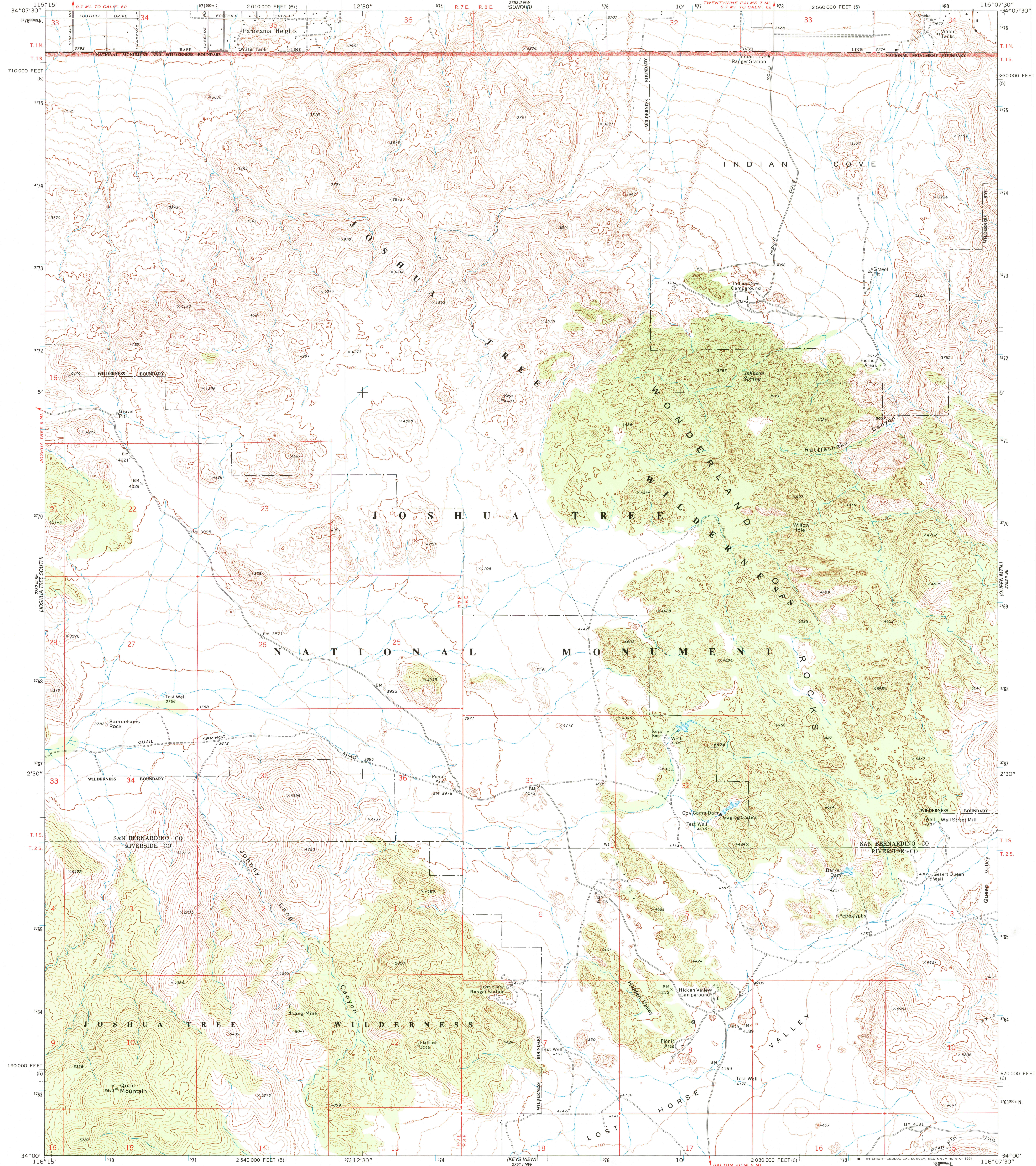


LOCAL TIME
LOCAL TIME

UNITED STATES
DEPARTMENT OF THE INTERIOR
GEOLOGICAL SURVEY

INDIAN COVE QUADRANGLE
CALIFORNIA
7.5 MINUTE SERIES (TOPOGRAPHIC)

LOCAL TIME
LOCAL TIME



Produced by the United States Geological Survey in cooperation with California Department of Water Resources
Control by USGS and NOS/NOAA
Compiled from aerial photographs taken 1970. Field checked 1972
North American Datum of 1927 (NAD 27). Projection: California Coordinate System, zone 5 (Lambert Conformal Conic)
10 000-foot ticks: California Coordinate System, zones 5 and 6
Blue 1 000-meter Universal Transverse Mercator ticks, zone 11
North American Datum of 1983 (NAD 83) is shown by dashed corner ticks. The values of the shift between NAD 27 and NAD 83 for 7.5-minute intersections are obtainable from National Geodetic Survey NADCON software
There may be private inholdings within the boundaries of the National or State reservations shown on this map
Where omitted, land lines have not been established

UTM GRID AND 1994 MAGNETIC NORTH DECLINATION AT CENTER OF SHEET
Photoinspected from 1989 source; no major culture or drainage changes observed. Boundaries and names revised 1994

SCALE 1:24 000
1 000 0 1000 2000 3000 4000 5000 6000 7000 FEET
1 5 10 15 20 25 30 35 40 45 50 METERS
CONTOUR INTERVAL 40 FEET
NATIONAL GEODETIC VERTICAL DATUM OF 1929
THIS MAP COMPLIES WITH NATIONAL MAP ACCURACY STANDARDS
FOR SALE BY U. S. GEOLOGICAL SURVEY, DENVER, COLORADO 80225, OR RESTON, VIRGINIA 22092
A FOLDER DESCRIBING TOPOGRAPHIC MAPS AND SYMBOLS IS AVAILABLE ON REQUEST



USGS HISTORICAL MAP ARCHIVES
OCT 12 1994
REC'D FILE COPY

ROAD CLASSIFICATION
Primary highway, hard surface
Secondary highway, hard surface
Unimproved road
Interstate Route
U. S. Route
State Route
Indian Cove, CA
34116-A2-TF-024
1972
MINOR REVISION 1994
DMA 2752 II SW-SERIES V895