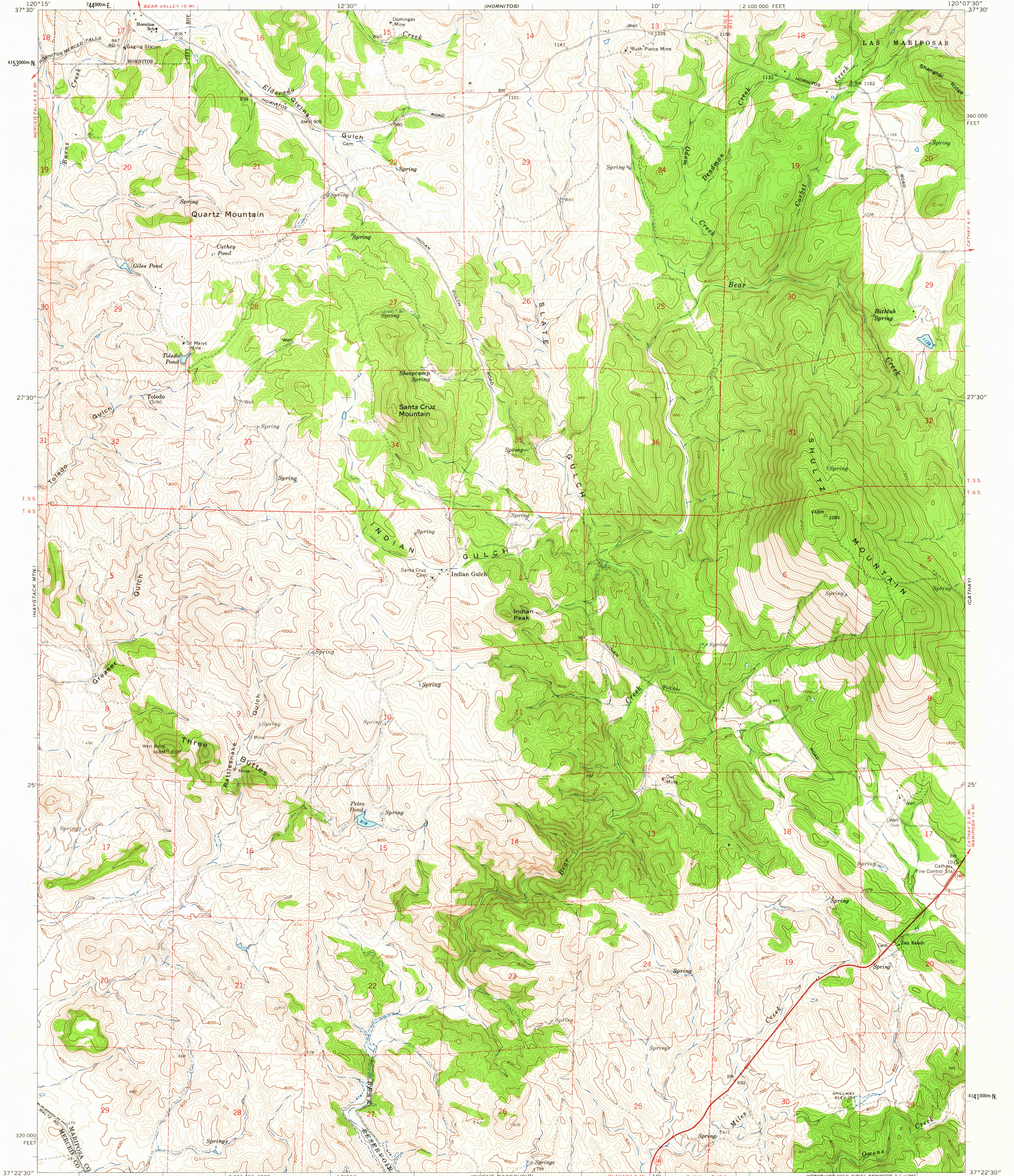


MERCED FALLS

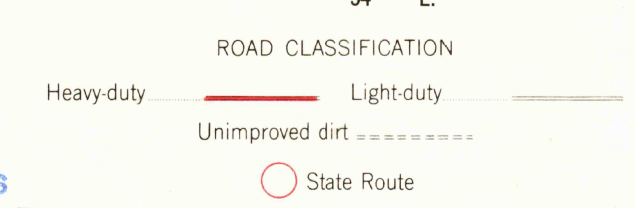
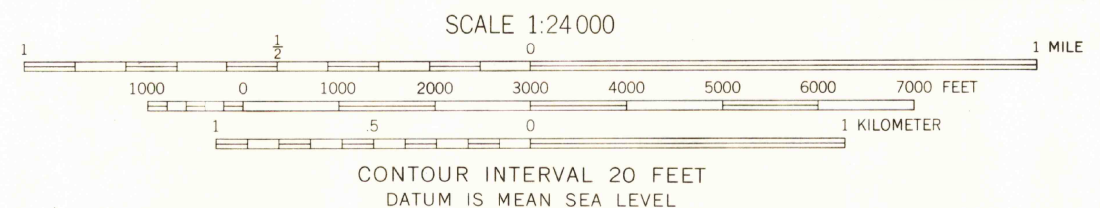
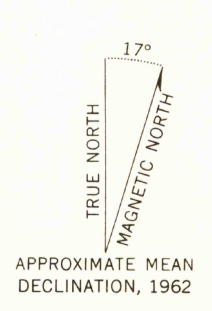
UNITED STATES
DEPARTMENT OF THE INTERIOR
GEOLOGICAL SURVEY

INDIAN GULCH QUADRANGLE
CALIFORNIA
7.5 MINUTE SERIES (TOPOGRAPHIC)
NW/4 INDIAN GULCH 15' QUADRANGLE

BEAR VALLEY



Mapped, edited, and published by the Geological Survey in cooperation with California Department of Water Resources Control by USGS and USC&GS
Topography by photogrammetric methods from aerial photographs taken, 1959. Field checked 1962
Polyconic projection. 1927 North American datum 10,000-foot grid based on California coordinate system, zone 3 1000-meter Universal Transverse Mercator grid ticks, zone 10, shown in blue
Fine red dashed lines indicate selected fence lines
Area covered by dashed light-blue pattern is subject to controlled inundation



THIS MAP COMPLIES WITH NATIONAL MAP ACCURACY STANDARDS
FOR SALE BY U.S. GEOLOGICAL SURVEY, DENVER 25, COLORADO OR WASHINGTON 25, D. C.
A FOLDER DESCRIBING TOPOGRAPHIC MAPS AND SYMBOLS IS AVAILABLE ON REQUEST

USCS
Historical File
Topographic Division
INDIAN GULCH, CALIF.
NW/4 INDIAN GULCH 15' QUADRANGLE
N3722.5 - W12007.5/7.5
1962

3160