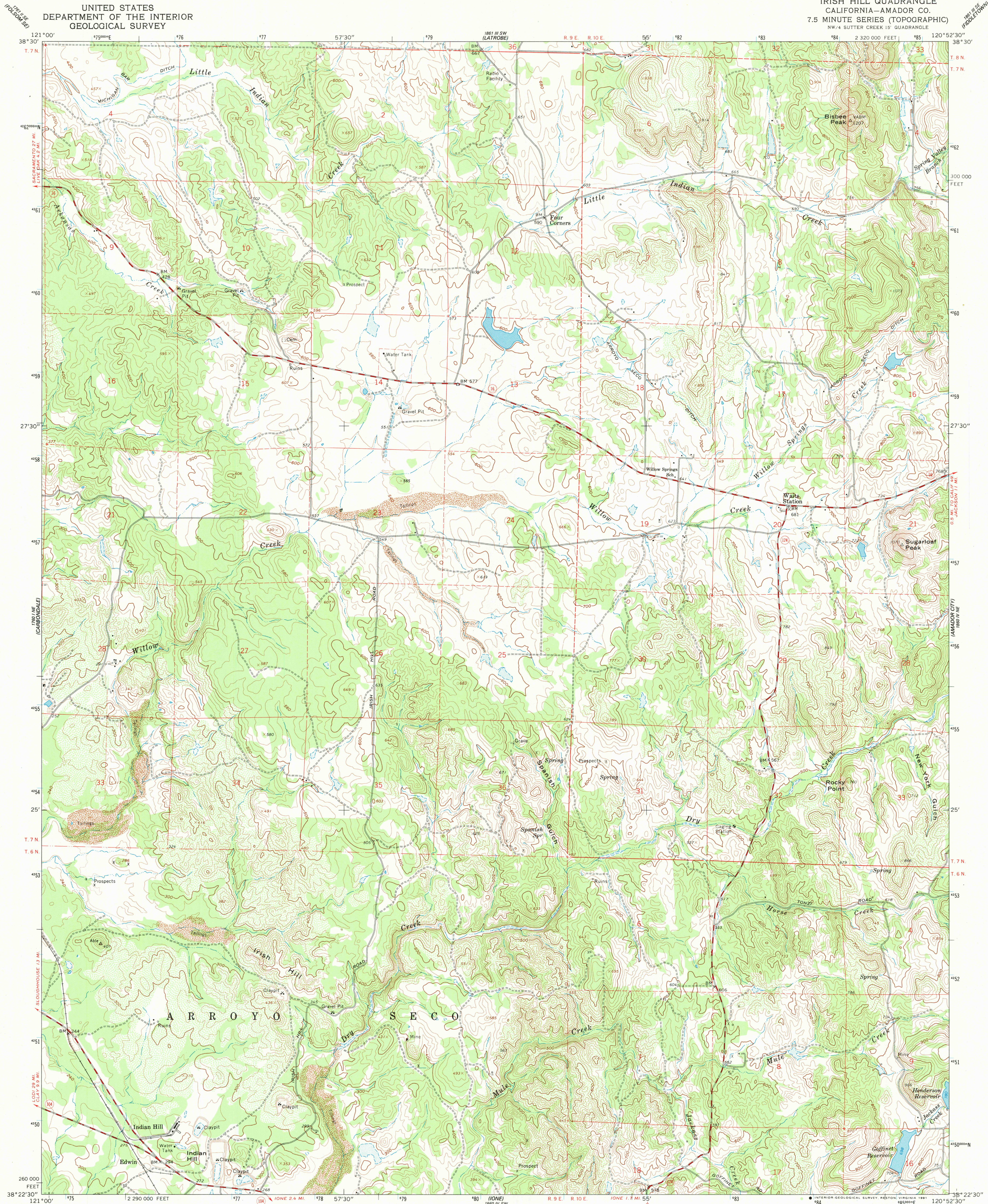
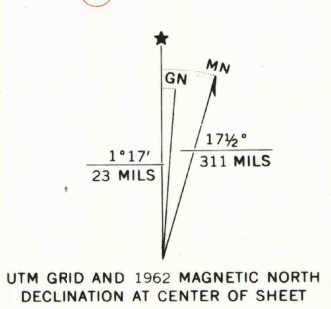


UNITED STATES
DEPARTMENT OF THE INTERIOR
GEOLOGICAL SURVEY

IRISH HILL QUADRANGLE
CALIFORNIA—AMADOR CO.
7.5 MINUTE SERIES (TOPOGRAPHIC)
NW 4 SUTTER CREEK 15' QUADRANGLE



Mapped, edited, and published by the Geological Survey
in cooperation with California Department of Water Resources
Control by USGS and NOS/NOAA
Topography by photogrammetric methods from aerial photographs
taken 1959. Field checked 1962
Polyconic projection, 1927 North American Datum
10,000-foot grid based on California coordinate system, zone 2
1000-meter Universal Transverse Mercator grid ticks, zone 10
shown in blue
To place on the predicted North American Datum 1983 move
the projection lines 14 meters north and 91 meters east as shown
by dashed corner ticks
Fine red dashed lines indicate selected fence lines



SCALE 1:24 000
1 000 0 1000 2000 3000 4000 5000 6000 7000 FEET
1 KILOMETER
CONTOUR INTERVAL 20 FEET
DOTTED LINES REPRESENT 10-FOOT CONTOURS
NATIONAL GEODETIC VERTICAL DATUM OF 1929
THIS MAP COMPLIES WITH NATIONAL MAP ACCURACY STANDARDS
FOR SALE BY U.S. GEOLOGICAL SURVEY, DENVER, COLORADO 80225, OR RESTON, VIRGINIA 22092
A FOLDER DESCRIBING TOPOGRAPHIC MAPS AND SYMBOLS IS AVAILABLE ON REQUEST

ROAD CLASSIFICATION
Medium-duty ——— Light-duty ———
Unimproved dirt ———
State Route ———
IRISH HILL, CALIF.
38120-D8-11-024
1962
DMA 1860 IV NW-SERIES V895