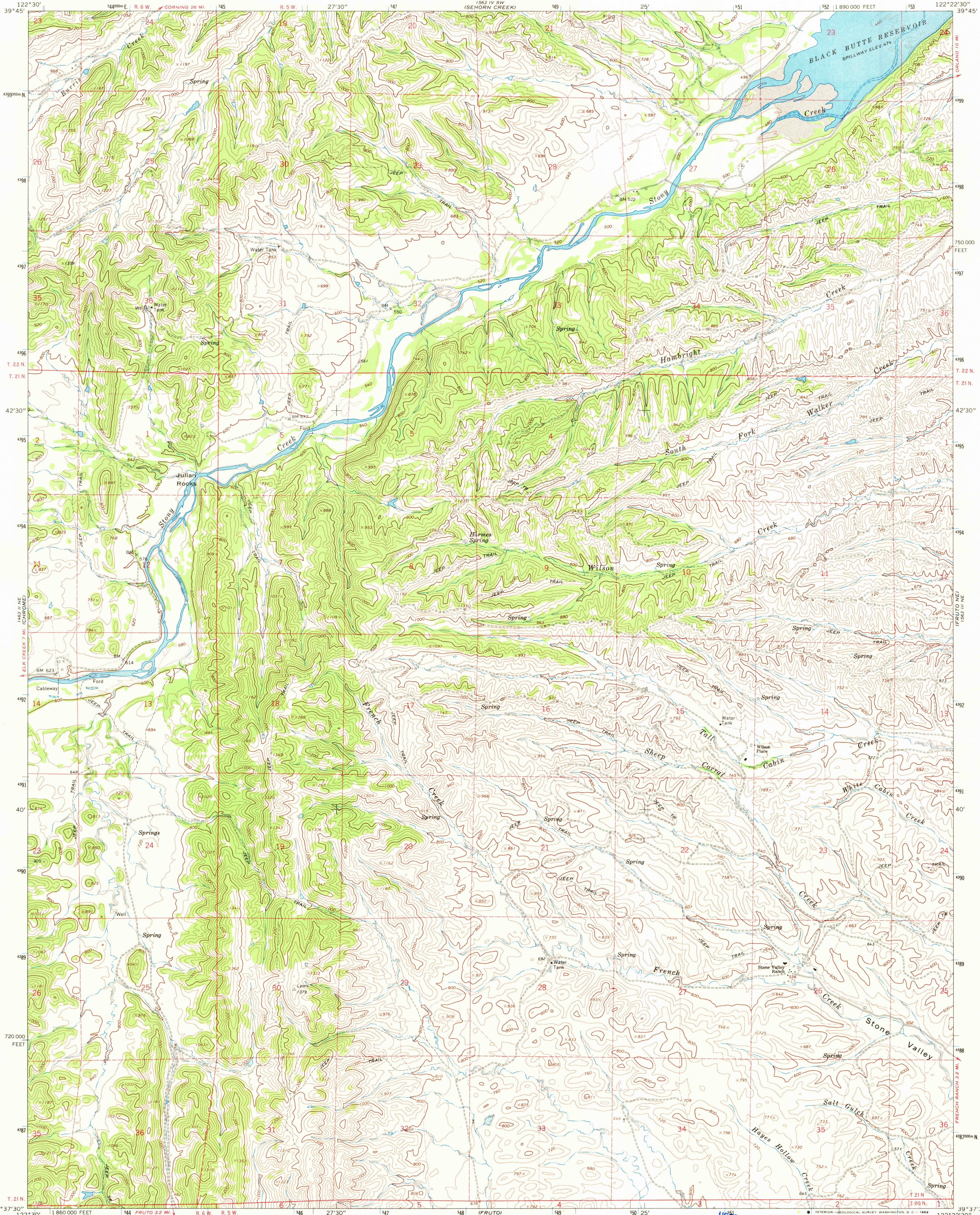


1863 1/2 SE
BLACK BUTTE DAM



Mapped, edited, and published by the Geological Survey

Control by USGS and USC&GS

Topography by photogrammetric methods from aerial

photographs taken 1965. Field checked 1968

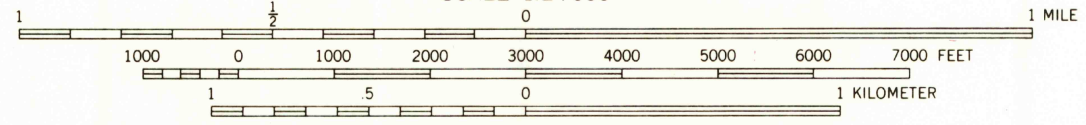
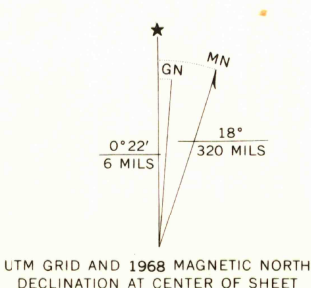
Underwater contours by USCE

Polyconic projection. 1927 North American datum

10,000-foot grid based on California coordinate system, zone 2

1000-meter Universal Transverse Mercator grid ticks, zone 10, shown in blue

Fine red dashed lines indicate selected fence lines



SCALE 1:24 000
CONTOUR INTERVAL 40 FEET
DOTTED LINES REPRESENT 20-FOOT CONTOURS
DATUM IS MEAN SEA LEVEL

USGS
Historical File
Topographic Division

ROAD CLASSIFICATION
Light-duty ——— Unimproved dirt - - - - -



QUADRANGLE LOCATION

U.S.G.S.
FINE COPY
TOPOGRAPHIC DIVISION

JULIAN ROCKS, CALIF.
NW/4 FRUTO 15' QUADRANGLE
N3937.5—W12222.5/7.5

AUG 1 1969

1968

AMS 1563 III NW—SERIES V895

THIS MAP COMPLIES WITH NATIONAL MAP ACCURACY STANDARDS
FOR SALE BY U. S. GEOLOGICAL SURVEY, DENVER, COLORADO 80225, OR WASHINGTON, D. C. 20242
A FOLDER DESCRIBING TOPOGRAPHIC MAPS AND SYMBOLS IS AVAILABLE ON REQUEST