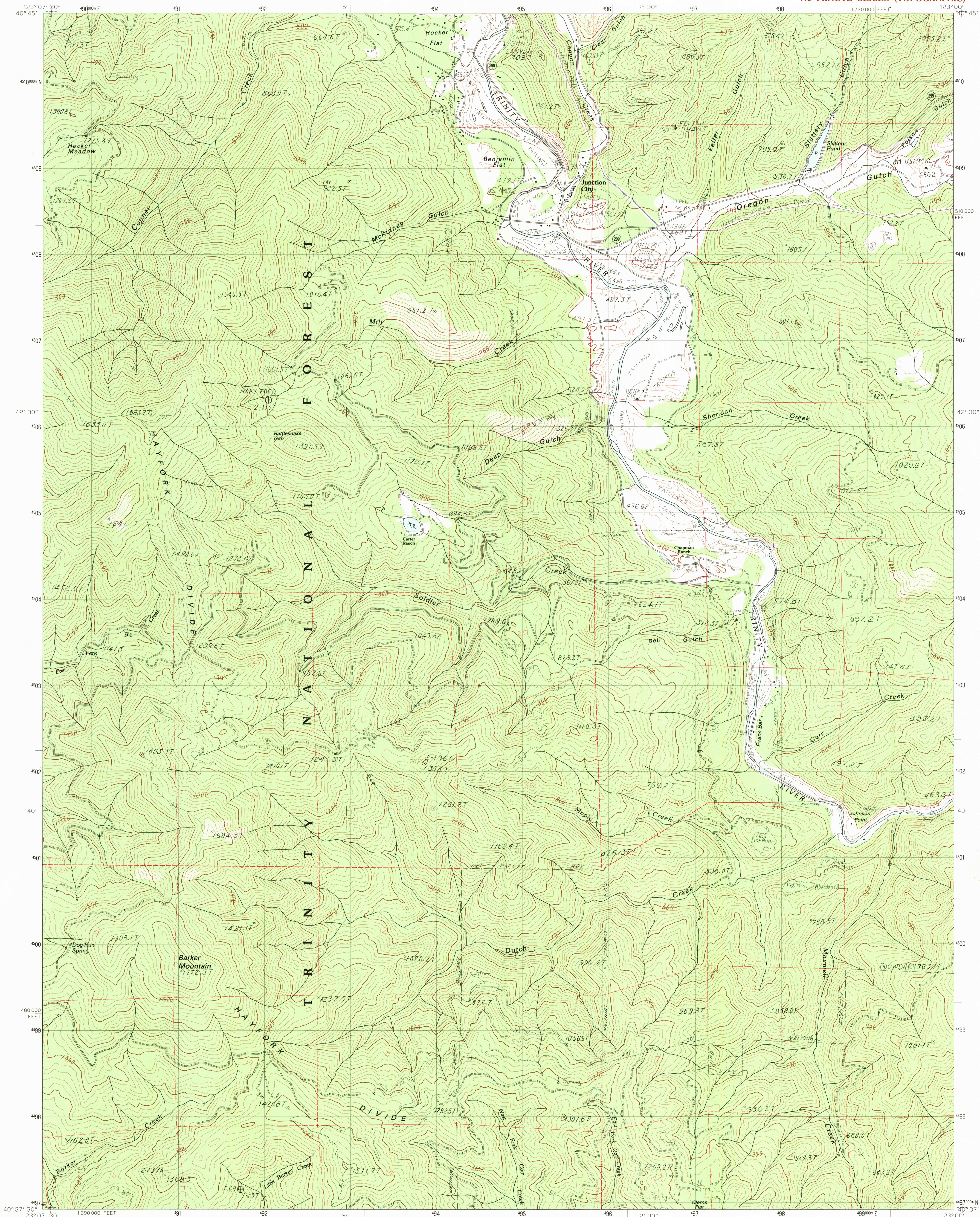


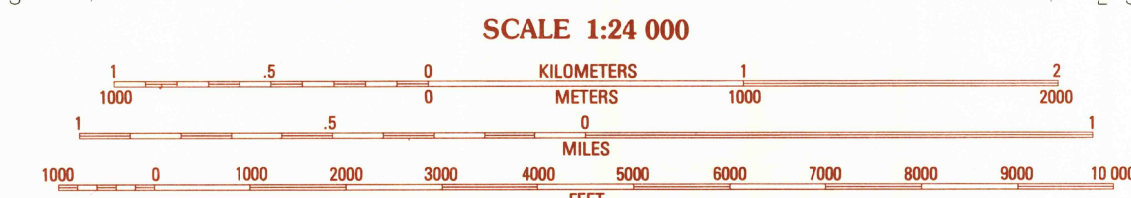
UNITED STATES
DEPARTMENT OF THE INTERIOR
GEOLOGICAL SURVEY

JUNCTION CITY QUADRANGLE
CALIFORNIA—TRINITY CO.
7.5 MINUTE SERIES (TOPOGRAPHIC)



PRODUCED BY THE UNITED STATES GEOLOGICAL SURVEY
CONTROL BY: USGS NOS/NOAA
COMPILED FROM AERIAL PHOTOGRAPHS TAKEN: 1972
FIELD CHECKED: 1976 MAP EDITED: 1982
PROJECTION: UNIVERSAL TRANSVERSE MERCATOR
GRID: 1000-METER UNIVERSAL TRANSVERSE MERCATOR ZONE 10
10,000-FOOT STATE GRID TICS: CALIFORNIA ZONE 1
UTM GRID DECLINATION: 02° WEST
1980 MAGNETIC NORTH DECLINATION: 17°30' EAST
VERTICAL DATUM: NATIONAL GEODETIC VERTICAL DATUM OF 1929
HORIZONTAL DATUM: 1927 NORTH AMERICAN DATUM
To place on the predicted North American Datum of 1983,
move the projection lines as shown by dashed corner ticks
(19 meters north/94 meters east)
There may be private inholdings within the boundaries of any
Federal and State Reservations shown on this map
Certain land lines are omitted because of insufficient data

PROVISIONAL MAP
Produced from original
manuscript drawings. Infor-
mation shown as of date of
field check.



CONTOUR INTERVAL 20 METERS
WITH RIVER CROSSINGS SHOWN AT 2.5 METERS
ELEVATIONS SHOWN TO THE NEAREST 0.1 METER
To convert meters to feet multiply by 3.2808
To convert feet to meters multiply by 0.3048

CONTOURS AND ELEVATIONS IN METERS

THIS MAP COMPLIES WITH NATIONAL MAP ACCURACY STANDARDS
FOR SALE BY U.S. GEOLOGICAL SURVEY, DENVER, COLORADO 80225, OR RESTON, VIRGINIA 22092

1	2	3	1 Helena
			2 Dedrick
4		5	3 Rush Creek Lakes
			4 Hayfork Baldy
6	7	8	5 Weaverville
			6 Hayfork
			7 Hayfork Summit
			8 Hosimbim Mtn.

ADJOINING 7x7 QUADRANTS: NAMES

JUNCTION CITY, CALIF.
PROVISIONAL EDITION 1982

40123-F1-TM-024

FEB 4 1983