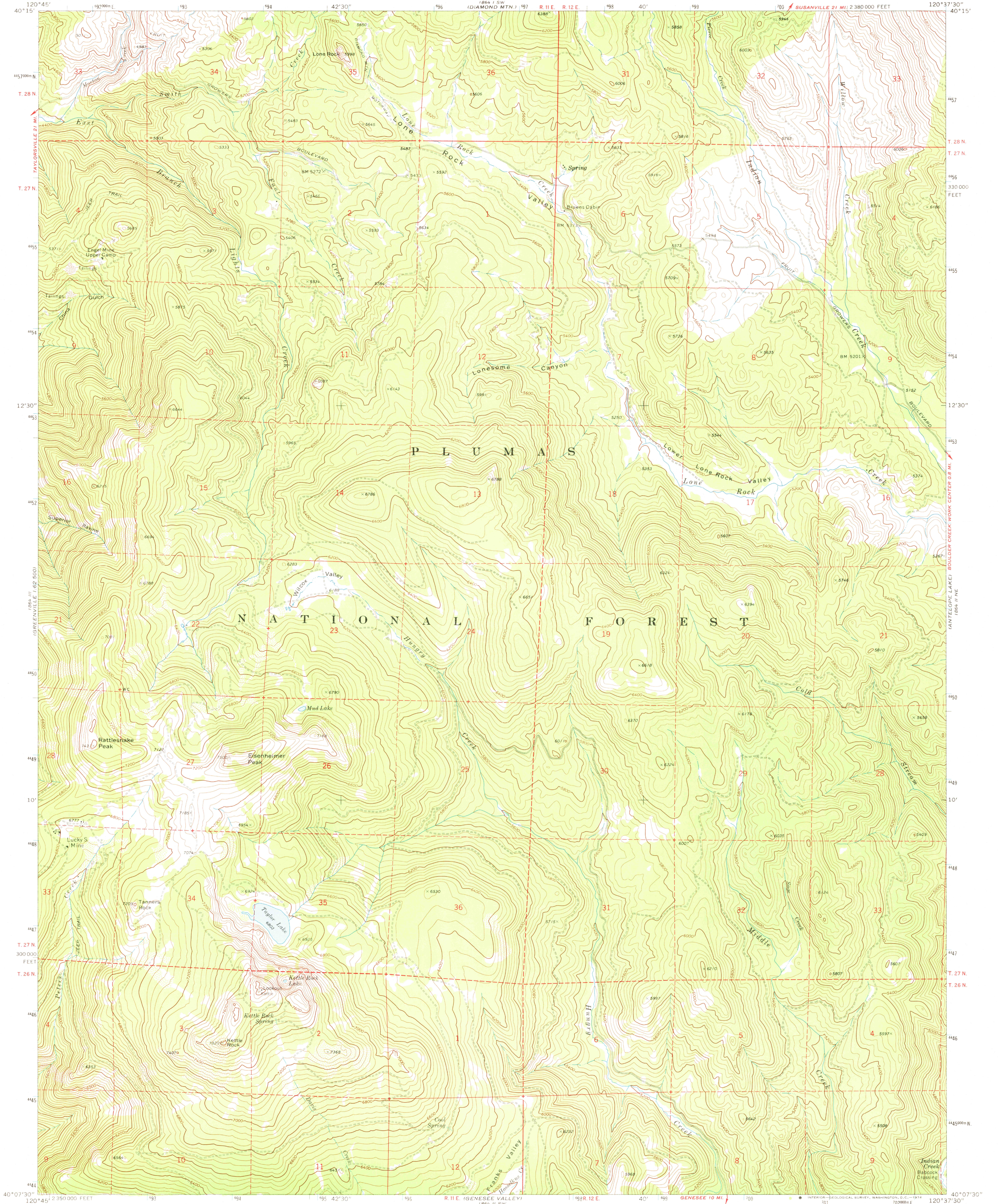
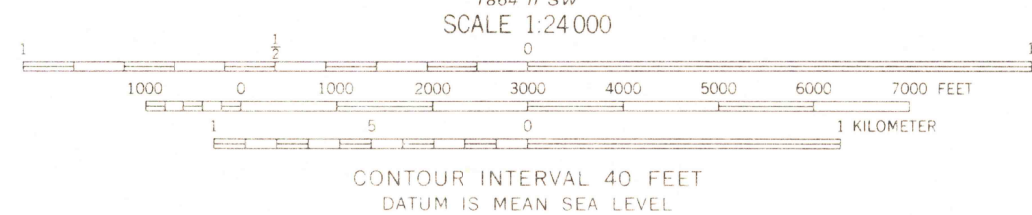
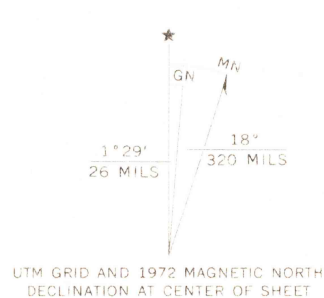


UNITED STATES  
DEPARTMENT OF THE INTERIOR  
GEOLOGICAL SURVEY

KETTLE ROCK QUADRANGLE  
CALIFORNIA—PLUMAS CO.  
7.5 MINUTE SERIES (TOPOGRAPHIC)  
NW 4 KETTLE ROCK 15' QUADRANGLE  
2 380 000 FEET



Mapped by the U. S. Forest Service  
Edited and published by the Geological Survey  
Control by USGS, USC&GS, and USFS  
Topography by photogrammetric methods from aerial  
photographs taken 1965. Field checked by USGS 1972  
Projection and 10,000-foot grid ticks: California coordinate  
system, zone 1 (Lambert conformal conic)  
1000-meter Universal Transverse Mercator grid ticks,  
zone 10, shown in blue. 1927 North American datum



ROAD CLASSIFICATION  
Primary highway, hard surface  
Secondary highway, hard surface  
Light-duty road, hard or improved surface  
Unimproved road  
Interstate Route  
U. S. Route  
State Route

KETTLE ROCK, CALIF.  
NW 4 KETTLE ROCK 15' QUADRANGLE  
N4007.5-W12037.5/7.5

1972

AMS 1864 11 NW—SERIES V895

THIS MAP COMPLIES WITH NATIONAL MAP ACCURACY STANDARDS  
FOR SALE BY U. S. GEOLOGICAL SURVEY, DENVER, COLORADO 80225, OR WASHINGTON, D. C. 20242  
A FOLDER DESCRIBING TOPOGRAPHIC MAPS AND SYMBOLS IS AVAILABLE ON REQUEST

USGS  
Historical File  
Topographic Division

3721  
JUN 21 1974