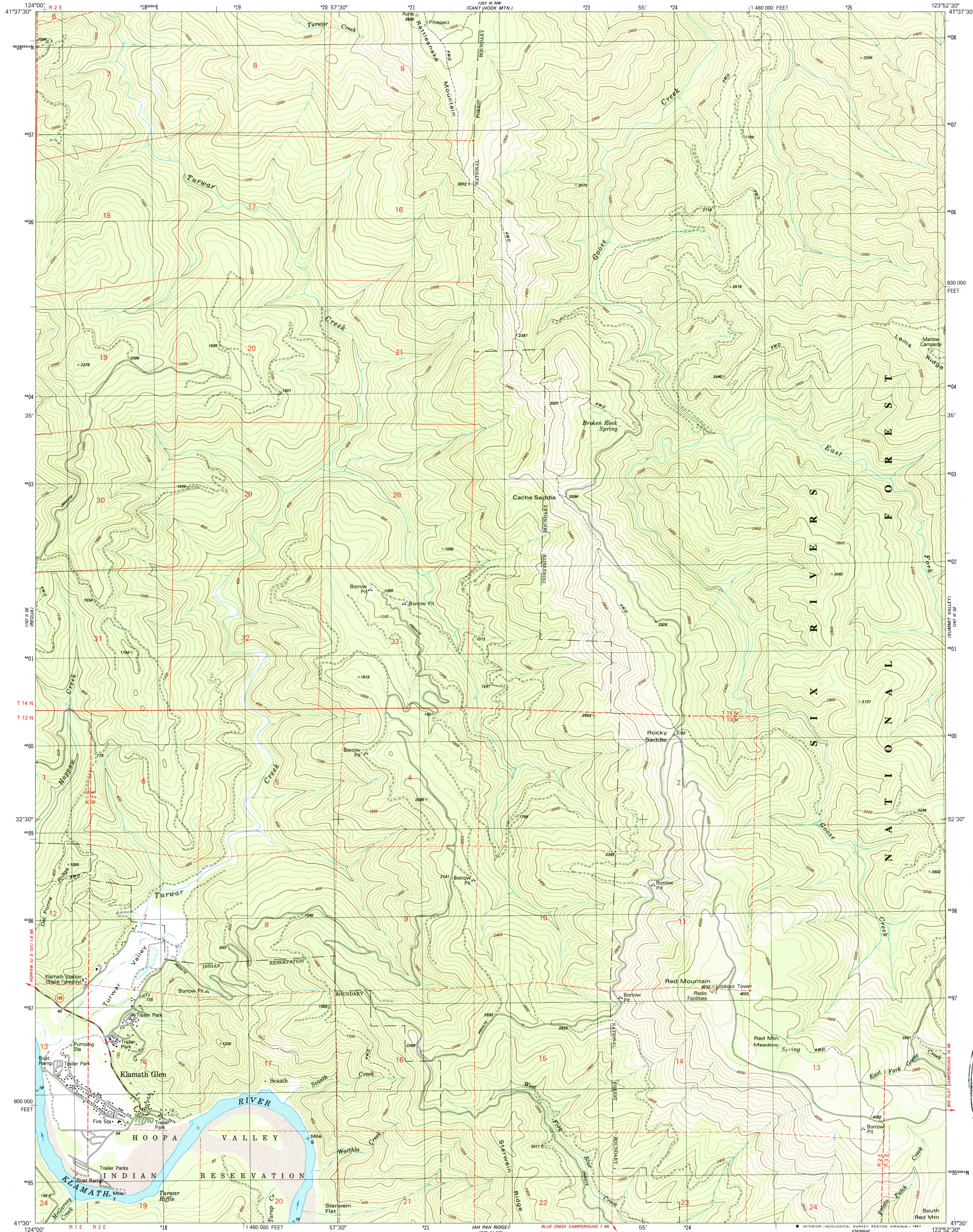


UNITED STATES  
DEPARTMENT OF THE INTERIOR  
GEOLOGICAL SURVEY

KLAMATH GLEN QUADRANGLE  
CALIFORNIA-DEL NORTE CO  
7.5 MINUTE SERIES (TOPOGRAPHIC)  
SW/4 SHIP MOUNTAIN 15' QUADRANGLE

1267 1/4 NW  
(SHIP MOUNTAIN)



Mapped, edited, and published by the Geological Survey

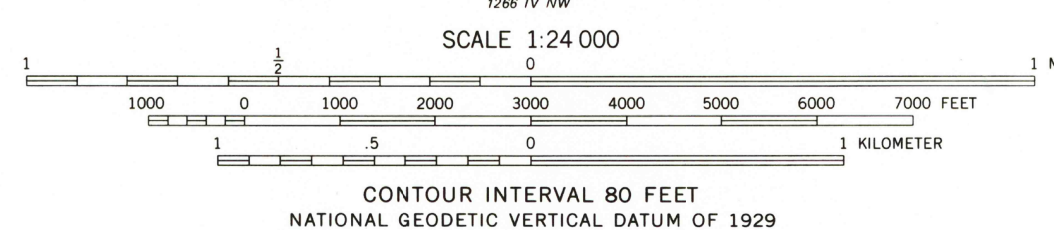
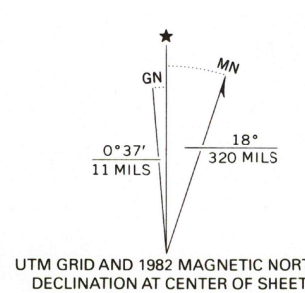
Control by USGS and NOS/NOAA

Topography by photogrammetric methods from aerial  
photographs taken 1975-76. Field checked 1977  
Map edited 1982

Projection and 10,000-foot grid ticks: California coordinate  
system, zone 1 (Lambert conformal conic)  
1000-meter Universal Transverse Mercator grid, zone 10  
1927 North American Datum

To place on the predicted North American Datum 1983  
move the projection lines 21 meters north and  
97 meters east as shown by dashed corner ticks

Certain land lines are omitted because of insufficient data  
There may be private inholdings within the boundaries of  
the National or State reservations shown on this map



ROAD CLASSIFICATION	
Primary highway, hard surface	Light-duty road, hard or improved surface
Secondary highway, hard surface	Unimproved road
Interstate Route	U. S. Route
	State Route

KLAMATH GLEN, CALIF.  
SW/4 SHIP MOUNTAIN 15' QUADRANGLE  
41123-E8-TF-024

1982

DMA 1267 III SW-SERIES V895

