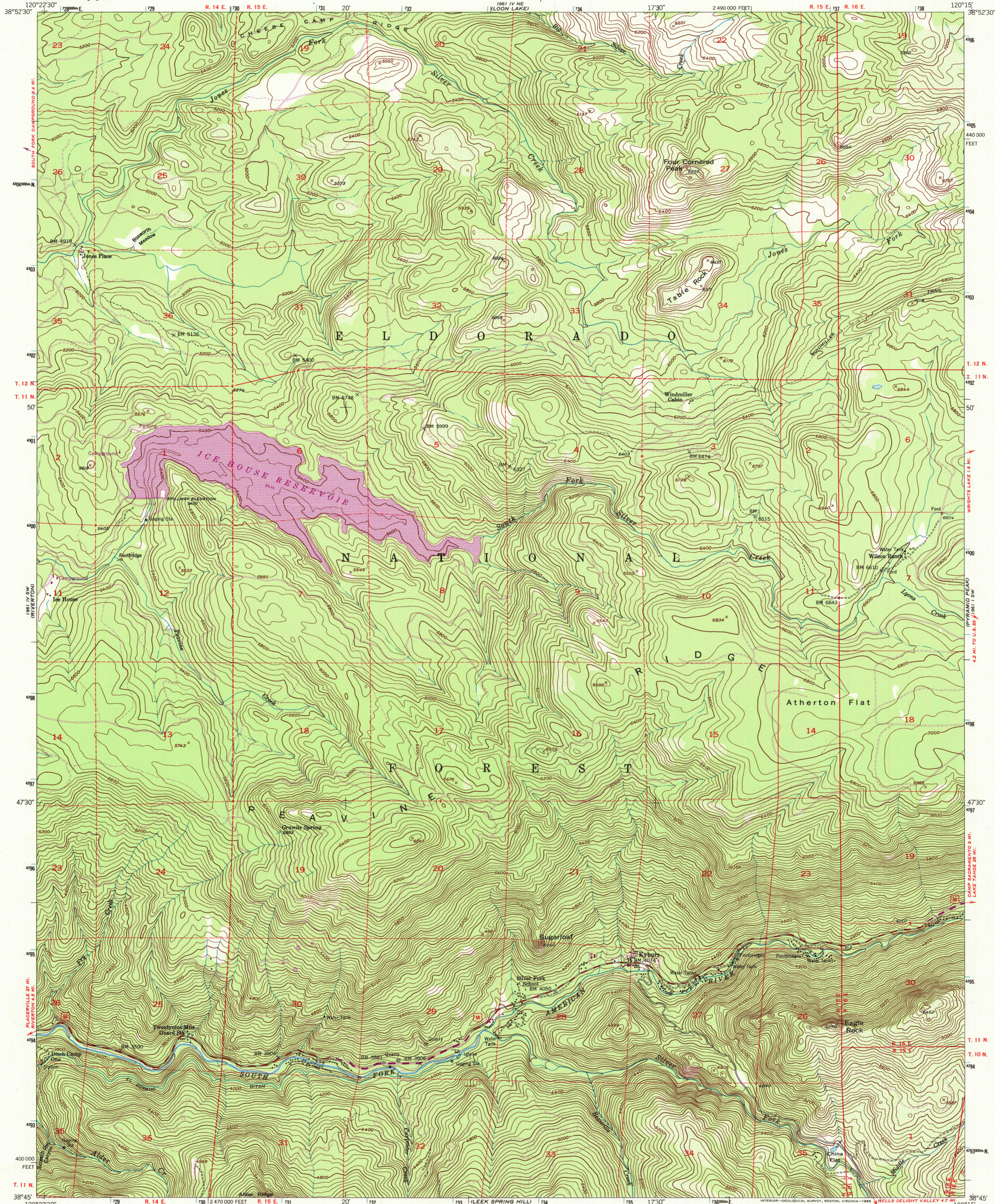




U.S. DEPARTMENT OF THE INTERIOR
U.S. GEOLOGICAL SURVEY

KYBURZ QUADRANGLE
CALIFORNIA - EL DORADO CO.
7.5 MINUTE SERIES (TOPOGRAPHIC)
SE/4 ROBBS PEAK 15' QUADRANGLE



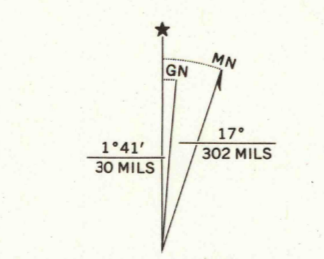
Mapped, edited, and published by the Geological Survey

Control by USC&GS

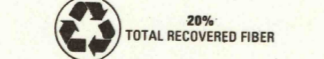
Topography from aerial photographs by multiplex methods
Aerial photographs taken 1948. Field check 1952

Polyconic projection. 1927 North American datum
10,000-foot grid based on California coordinate system, zone 2
1000-meter Universal Transverse Mercator grid ticks,
zone 10, shown in blue

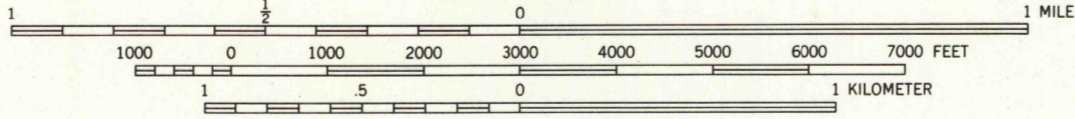
To place on the predicted North American Datum 1983
move the projection lines 14 meters north and
89 meters east as shown by dashed corner ticks
Dashed land lines indicate approximate locations
There may be private inholdings within the boundaries of
the National or State reservations shown on this map



UTM GRID AND 1973 MAGNETIC NORTH
DECLINATION AT CENTER OF SHEET



SCALE 1:24 000



CONTOUR INTERVAL 40 FEET
NATIONAL GEODETIC VERTICAL DATUM OF 1929



QUADRANGLE LOCATION

Revisions shown in purple compiled from aerial photographs
taken 1973. This information not field checked

ROAD CLASSIFICATION
Medium-duty ——— Light-duty ———
Unimproved dirt - - - - -
U. S. Route

KYBURZ, CALIF.
SE/4 ROBBS PEAK 15' QUADRANGLE
N3845-W12015/7.5

1952
PHOTOREVISED 1973
DMA 1961 IV SE-SERIES V895

THIS MAP COMPLIES WITH NATIONAL MAP ACCURACY STANDARDS
FOR SALE BY U.S. GEOLOGICAL SURVEY, P.O. BOX 25286, DENVER, COLORADO 80225
A FOLDER DESCRIBING TOPOGRAPHIC MAPS AND SYMBOLS IS AVAILABLE ON REQUEST

