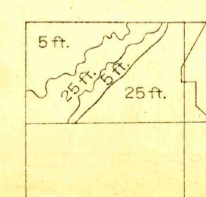
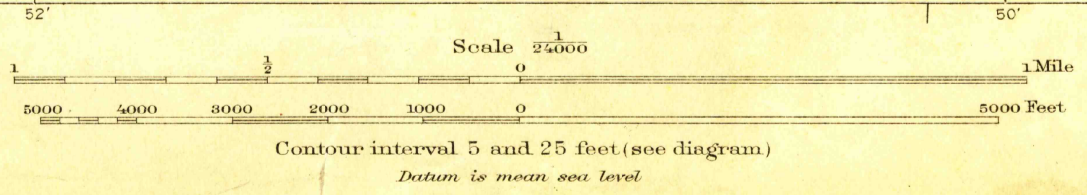
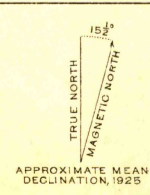


THIS AREA IS SHOWN ON THE MAP OF ANAHEIM QUADRANGLE,
SCALE 1:62,500, SURVEYED IN 1894, CULTURE REVISED IN 1900

U. S. G. S.
FILE COPY
Inspection and Editing.
USGS
Historical File
Topographic Division

Topography by L. O. Newsome and T. H. Moncure
Control by U. S. Geological Survey
Surveyed in 1925



Polyconic projection, North American datum
5000 yard grid based upon U. S. zone system, G

LA BREA, CALIF.
Edition of 1925
reprinted 1932

AUG 30 1932 (2135)