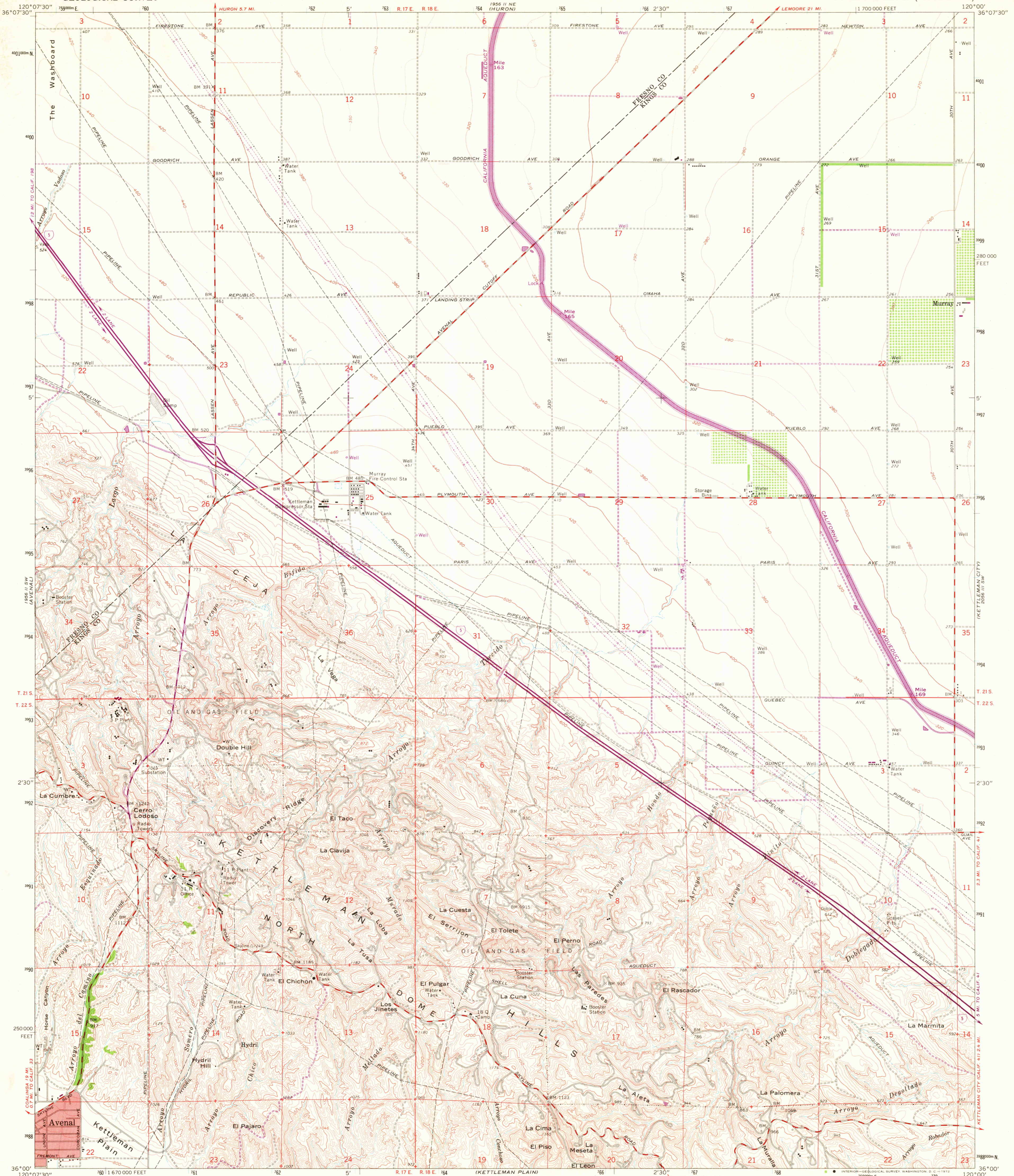


UNITED STATES  
DEPARTMENT OF THE INTERIOR  
GEOLOGICAL SURVEY

LA CIMA QUADRANGLE  
CALIFORNIA  
7.5 MINUTE SERIES (TOPOGRAPHIC)



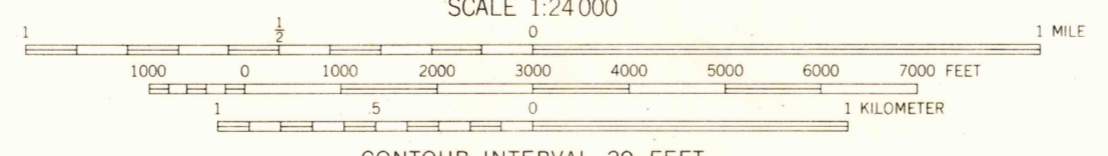
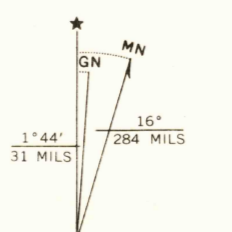
Mapped, edited, and published by the Geological Survey  
Control by USGS and USC&GS  
Topography by photogrammetric methods from aerial  
photographs taken 1958 and 1962, and  
planimeter surveys 1963

Polyconic projection. 1927 North American datum  
10,000-foot grid based on California coordinate system, zone 4  
1000-meter Universal Transverse Mercator grid ticks,  
zone 10, shown in blue

Red tint indicates areas in which only landmark buildings  
are shown

Fine red dashed lines indicate selected fence lines  
North half of this map lies within a subsidence area  
Vertical control based on latest available adjustment

Revisions shown in purple compiled from aerial photographs  
taken 1971. This information not field checked



SCALE 1:24 000  
CONTOUR INTERVAL 20 FEET  
DOTTED LINES REPRESENT 10-FOOT CONTOURS  
DATUM IS MEAN SEA LEVEL

THIS MAP COMPLIES WITH NATIONAL MAP ACCURACY STANDARDS  
FOR SALE BY U. S. GEOLOGICAL SURVEY, DENVER, COLORADO 80225, OR WASHINGTON, D. C. 20242  
A FOLDER DESCRIBING TOPOGRAPHIC MAPS AND SYMBOLS IS AVAILABLE ON REQUEST



ROAD CLASSIFICATION  
Medium-duty ——— Light-duty ———  
Unimproved dirt ———  
Primary highway, hard surface ———  
Interstate Route ———

USGS HISTORICAL FILE TOPOGRAPHIC DIVISION  
LA CIMA, CALIF.  
N3600—W12000/7.5  
1963  
PHOTOREVISED 1971  
AMS 1956 II SE—SERIES V895

4510