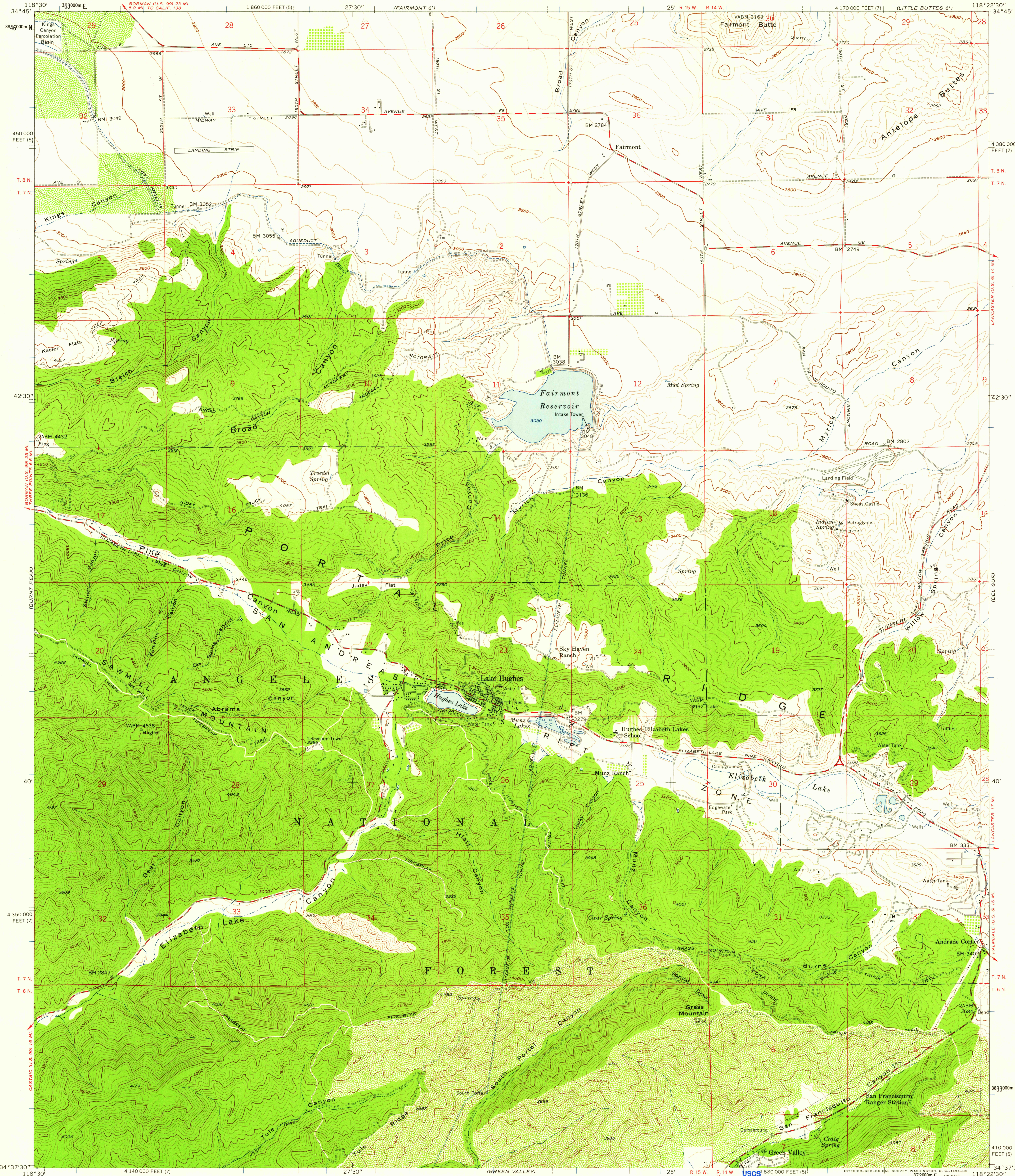
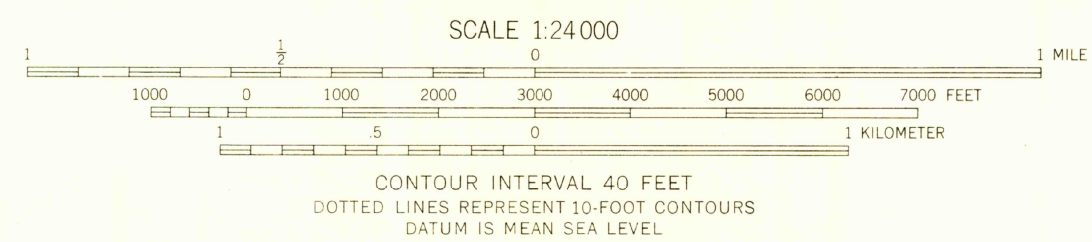


UNITED STATES  
DEPARTMENT OF THE INTERIOR  
GEOLOGICAL SURVEY

LAKE HUGHES QUADRANGLE  
CALIFORNIA—LOS ANGELES CO.  
7.5 MINUTE SERIES (TOPOGRAPHIC)  
NW 4 BOUQUET RESERVOIR 15 QUADRANGLE



Mapped, edited, and published by the Geological Survey  
Control by USGS, USC&GS and City of Los Angeles.  
Topography from aerial photographs by ER-55 plotter  
Aerial photographs taken 1956. Field check 1957  
Polyconic projection. 1927 North American datum  
10,000-foot grids based on California coordinate system,  
zones 5 and 7  
1000-meter Universal Transverse Mercator grid ticks,  
zone 11, shown in blue



USGS  
Historical File  
Topographic Division

ROAD CLASSIFICATION  
Medium-duty ——— Light-duty ———  
Unimproved dirt - - - - -



U.S.G.S.  
FILE COPY  
TOPOGRAPHIC DIVISION  
LAKE HUGHES, CALIF.  
NW 4 BOUQUET RESERVOIR 15 QUADRANGLE  
N3437.5—W11822.5/7.5

1957

THIS MAP COMPLIES WITH NATIONAL MAP ACCURACY STANDARDS  
FOR SALE BY U. S. GEOLOGICAL SURVEY, DENVER 2, COLORADO OR WASHINGTON 25, D. C.  
A FOLDER DESCRIBING TOPOGRAPHIC MAPS AND SYMBOLS IS AVAILABLE ON REQUEST

MAY 13 1959