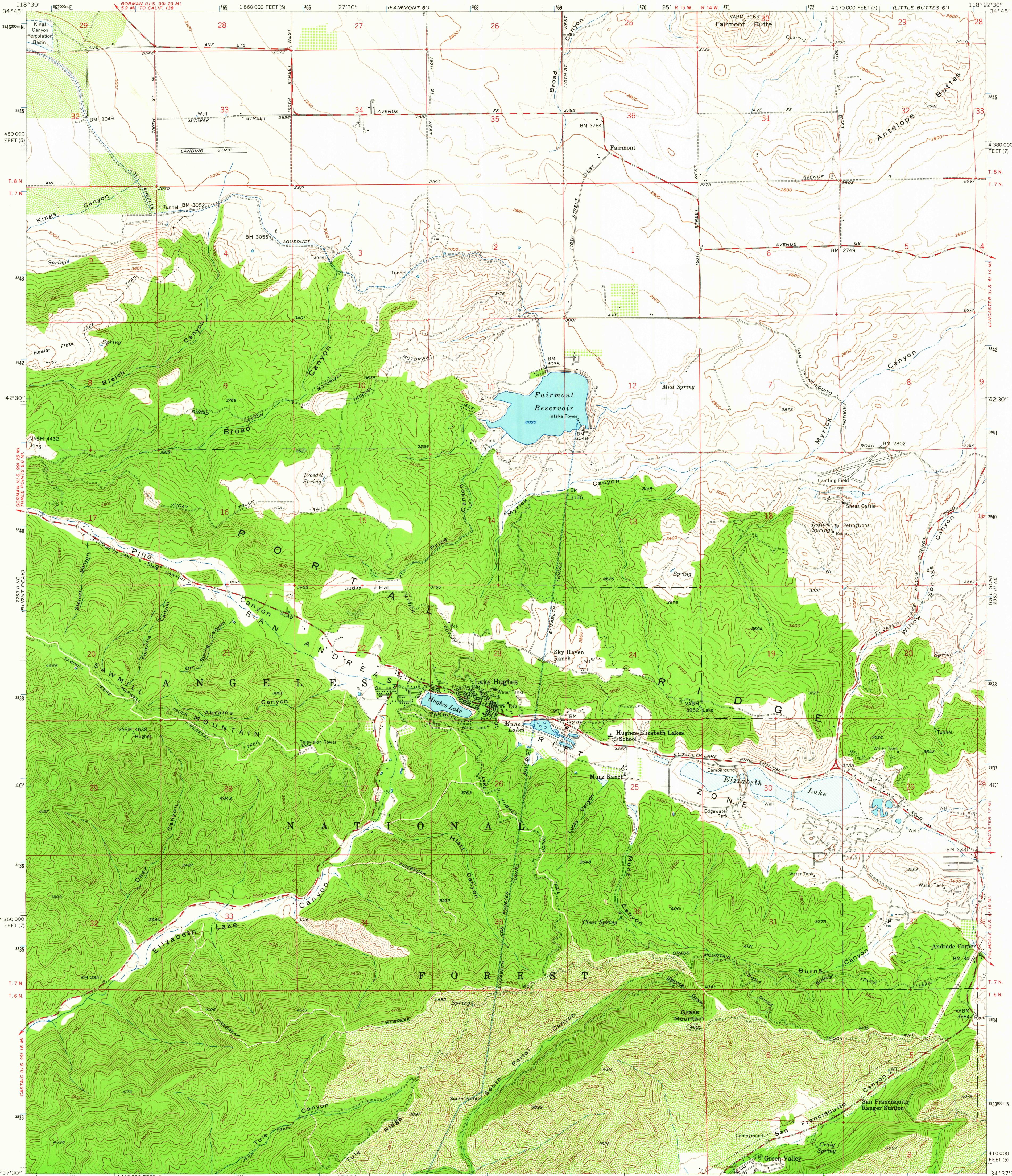
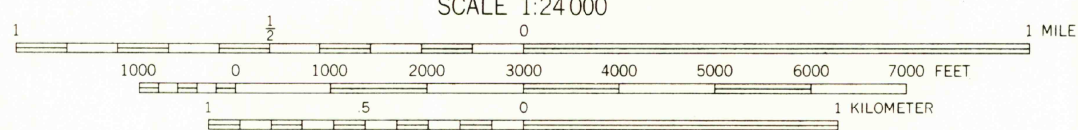
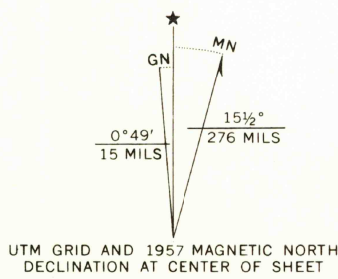


UNITED STATES
DEPARTMENT OF THE INTERIOR
GEOLOGICAL SURVEY

LAKE HUGHES QUADRANGLE
CALIFORNIA—LOS ANGELES CO.
7.5 MINUTE SERIES (TOPOGRAPHIC)
NW/4 BOUQUET RESERVOIR 15' QUADRANGLE



Mapped, edited, and published by the Geological Survey
Control by USGS, USC&GS and City of Los Angeles.
Topography from aerial photographs by ER-55 plotter
Aerial photographs taken 1956. Field check 1957
Polyconic projection. 1927 North American datum
10,000-foot grids based on California coordinate system,
zones 5 and 7
1000-meter Universal Transverse Mercator grid ticks,
zone 11, shown in blue



CONTOUR INTERVAL 40 FEET
DOTTED LINES REPRESENT 10-FOOT CONTOURS
DATUM IS MEAN SEA LEVEL

THIS MAP COMPLIES WITH NATIONAL MAP ACCURACY STANDARDS
FOR SALE BY U. S. GEOLOGICAL SURVEY, DENVER 25, COLORADO OR WASHINGTON 25, D. C.
A FOLDER DESCRIBING TOPOGRAPHIC MAPS AND SYMBOLS IS AVAILABLE ON REQUEST



USGS
Historical File
Topographic Division

ROAD CLASSIFICATION
Medium duty ————
Light duty ————
Unimproved dirt - - - - -

U.S.G.S.
FILE COPY
TOPOGRAPHIC DIVISION

LAKE HUGHES, CALIF.
NW/4 BOUQUET RESERVOIR 15' QUADRANGLE
N3437.5—W11822.5/7.5

1957
AMS 2353 III NW—SERIES V895

6380
SEP 21 1964