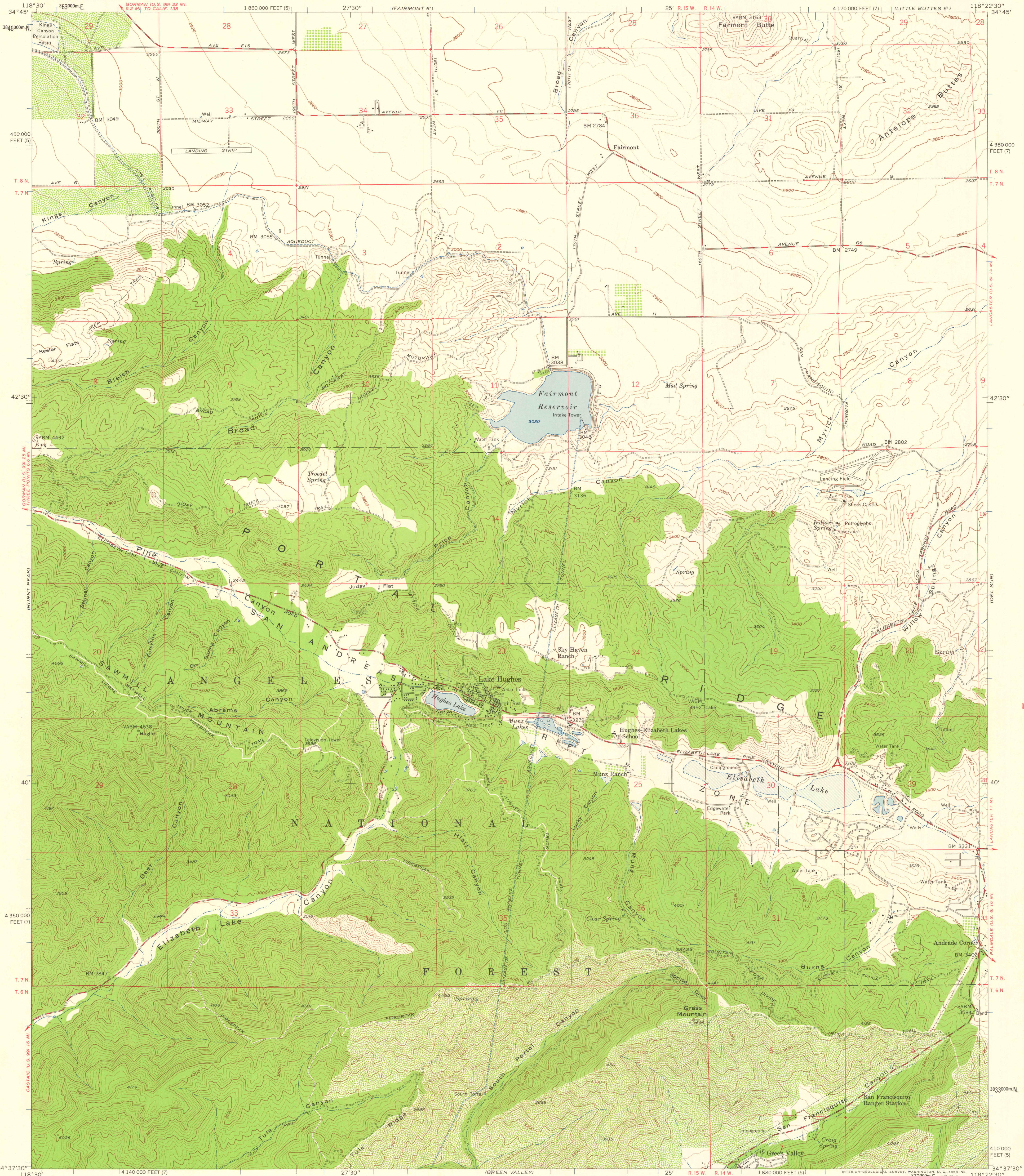


UNITED STATES  
DEPARTMENT OF THE INTERIOR  
GEOLOGICAL SURVEY

LAKE HUGHES QUADRANGLE  
CALIFORNIA—LOS ANGELES CO.  
7.5 MINUTE SERIES (TOPOGRAPHIC)  
NW 1/4 BOUQUET RESERVOIR 15' QUADRANGLE



Mapped, edited, and published by the Geological Survey  
Control by USGS, USC&GS and City of Los Angeles.  
Topography from aerial photographs by ER-55 plotter  
Aerial photographs taken 1956. Field check 1957  
Polyconic projection. 1927 North American datum  
10,000-foot grids based on California coordinate system,  
zones 5 and 7  
1000-meter Universal Transverse Mercator grid ticks,  
zone 11, shown in blue

TRUE NORTH  
MAGNETIC NORTH  
APPROXIMATE MEAN  
DECLINATION, 1957

SCALE 1:24,000  
1 000 0 1000 2000 3000 4000 5000 6000 7000 FEET  
1 0 5 10 KILOMETER  
CONTOUR INTERVAL 40 FEET  
DOTTED LINES REPRESENT 10-FOOT CONTOURS  
DATUM IS MEAN SEA LEVEL

THIS MAP COMPLIES WITH NATIONAL MAP ACCURACY STANDARDS  
FOR SALE BY U. S. GEOLOGICAL SURVEY, DENVER 2, COLORADO OR WASHINGTON 25, D. C.  
A FOLDER DESCRIBING TOPOGRAPHIC MAPS AND SYMBOLS IS AVAILABLE ON REQUEST

QUADRANGLE LOCATION

FILE COPY  
MAY 11 1959  
MAP INFORMATION OFFICE  
GEOLOGICAL SURVEY

ROAD CLASSIFICATION  
Medium-duty ——— Light-duty ———  
Unimproved dirt ———

LAKE HUGHES, CALIF.  
NW 1/4 BOUQUET RESERVOIR 15' QUADRANGLE  
N 3437.5—W 11822.5/7.5

1957