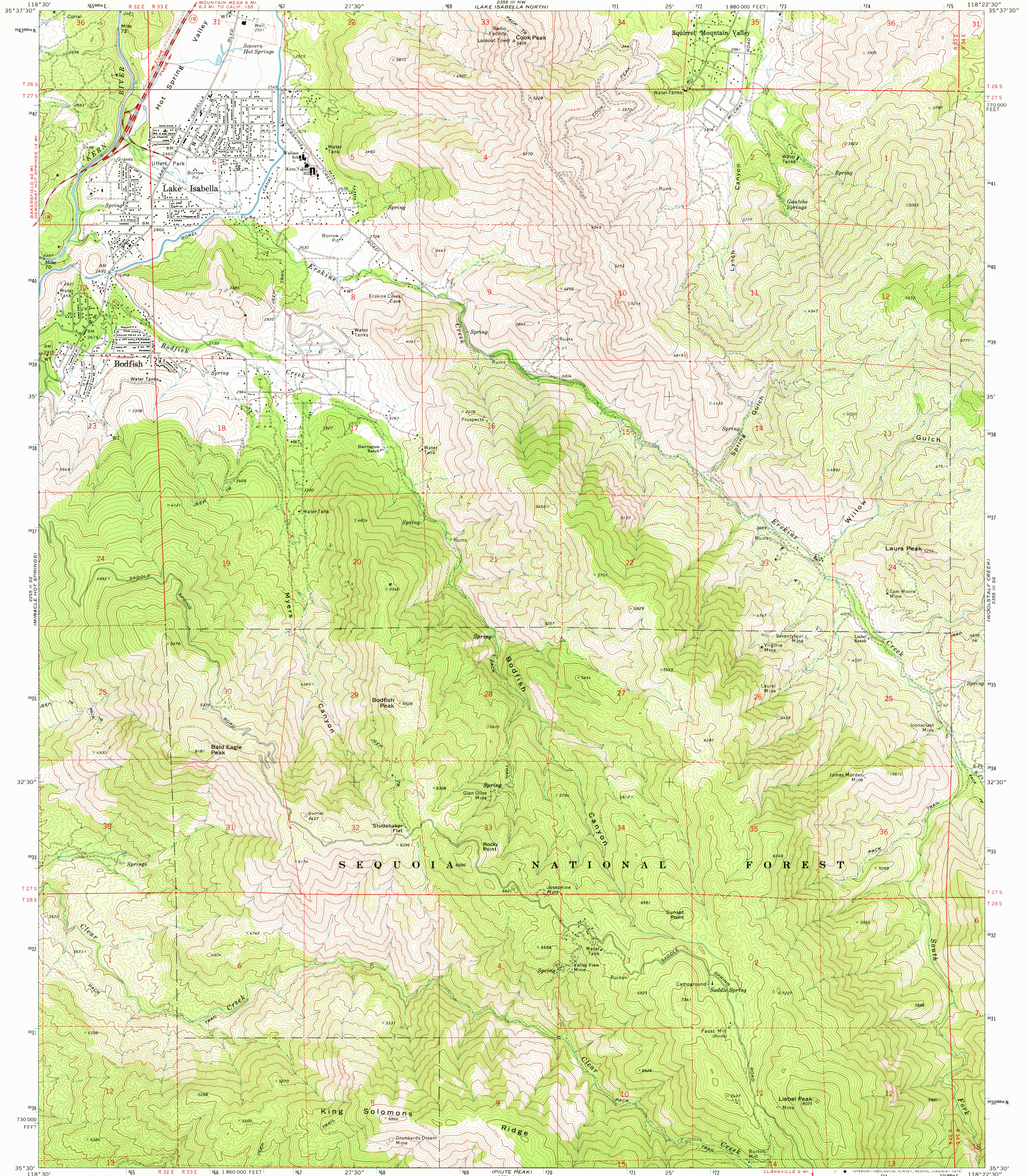
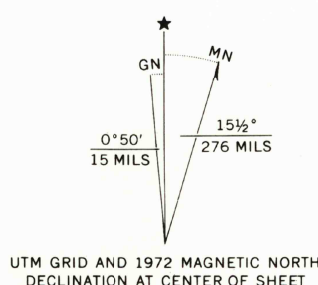


UNITED STATES
DEPARTMENT OF THE INTERIOR
GEOLOGICAL SURVEY

LAKE ISABELLA SOUTH QUADRANGLE
CALIFORNIA—KERN CO.
7.5 MINUTE SERIES (TOPOGRAPHIC)
SW 1/4 ISABELLA 15' QUADRANGLE



Mapped, edited, and published by the Geological Survey
Control by USGS and NOS/NOAA
Topography by photogrammetric methods from aerial
photographs taken 1970. Field checked 1972
Projection and 10,000-foot grid ticks: California coordinate
system, zone 5 (Lambert conformal conic)
1000-metre Universal Transverse Mercator grid ticks,
zone 11, shown in blue. 1927 North American datum
Fine red dashed lines indicate selected fence lines
Certain land lines are omitted because of insufficient data



SCALE 1:24 000
CONTOUR INTERVAL 40 FEET
DOTTED LINES REPRESENT 20-FOOT CONTOURS
NATIONAL GEODETIC VERTICAL DATUM OF 1929

THIS MAP COMPLIES WITH NATIONAL MAP ACCURACY STANDARDS
FOR SALE BY U. S. GEOLOGICAL SURVEY, DENVER, COLORADO 80225, OR RESTON, VIRGINIA 22092
A FOLDER DESCRIBING TOPOGRAPHIC MAPS AND SYMBOLS IS AVAILABLE ON REQUEST



ROAD CLASSIFICATION
Primary highway, hard surface
Secondary highway, hard surface
Interstate Route
Light-duty road, hard or improved surface
Unimproved road
U. S. Route
State Route

LAKE ISABELLA SOUTH, CALIF.
SW 1/4 ISABELLA 15' QUADRANGLE
N 3530—W 11822.5/7.5

USGS
Historical File
Topographic Division

1972
AMS 2555 III SW—SERIES V895

MAR 29 1976