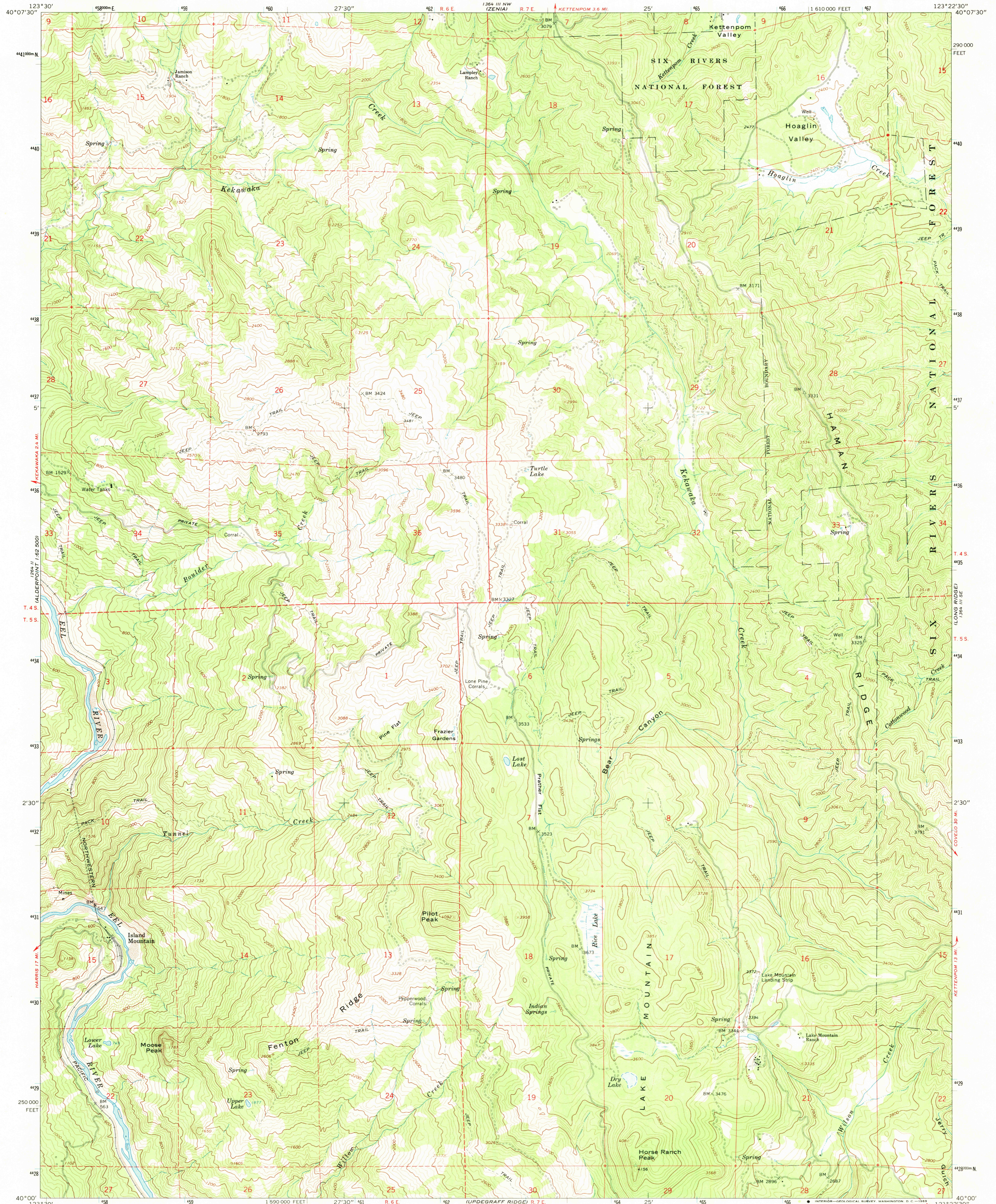
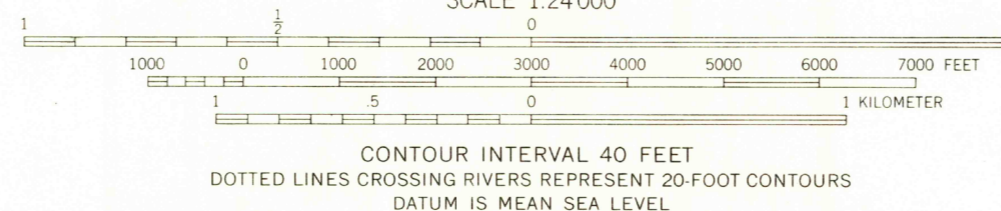
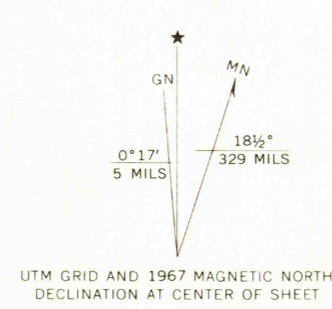


UNITED STATES  
DEPARTMENT OF THE INTERIOR  
GEOLOGICAL SURVEY

LAKE MOUNTAIN QUADRANGLE  
CALIFORNIA—TRINITY CO.  
7.5 MINUTE SERIES (TOPOGRAPHIC)  
SW/4 KETTENPOM 15' QUADRANGLE



Mapped, edited, and published by the Geological Survey  
Control by USGS and USC&GS  
Topography by photogrammetric methods from aerial  
photographs taken 1964. Field checked 1967  
Polyconic projection. 1927 North American datum  
10,000-foot grid based on California coordinate system, zone 1  
1000-meter Universal Transverse Mercator grid ticks,  
zone 10, shown in blue  
Fine red dashed lines indicate selected fence lines  
Where omitted, land lines have not been established



USGS  
Historical File  
Topographic Division



FILE COPY  
TOPOGRAPHIC DIVISION

U.S.G.S. ROAD CLASSIFICATION

Unimproved dirt -----

LAKE MOUNTAIN, CALIF.  
SW/4 KETTENPOM 15' QUADRANGLE  
N4000—W12322.5/7.5

1967

AMS 1364 III SW—SERIES V895

THIS MAP COMPLIES WITH NATIONAL MAP ACCURACY STANDARDS  
FOR SALE BY U. S. GEOLOGICAL SURVEY, DENVER, COLORADO 80225, OR WASHINGTON, D. C. 20242  
A FOLDER DESCRIBING TOPOGRAPHIC MAPS AND SYMBOLS IS AVAILABLE ON REQUEST

3520  
NOV 5 1969