

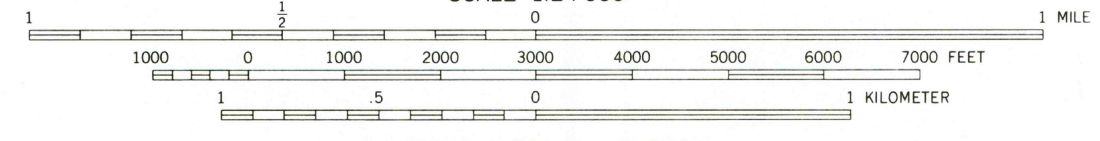
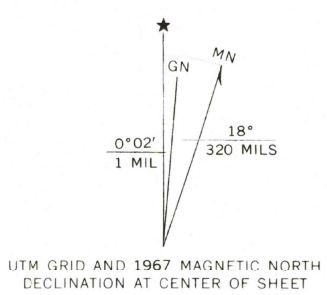
Mapped, edited, and published by the Geological Survey
Control by USGS and USC&GS

Topography by photogrammetric methods from aerial
photographs taken 1965. Field checked 1967

Polyconic projection. 1927 North American datum
10,000-foot grid based on California coordinate system, zone 2
1000-meter Universal Transverse Mercator grid ticks,
zone 10, shown in blue

To place on the predicted North American Datum 1983
move the projection lines 18 meters north and
95 meters east as shown by dashed corner ticks

There may be private inholdings within the boundaries of
the National or State reservations shown on this map
Areas covered by dashed light-blue pattern
are subject to controlled inundation



CONTOUR INTERVAL 40 FEET
DOTTED LINES REPRESENT 20-FOOT CONTOURS
NATIONAL GEODETIC VERTICAL DATUM OF 1929

THIS MAP COMPLIES WITH NATIONAL MAP ACCURACY STANDARDS
FOR SALE BY U. S. GEOLOGICAL SURVEY, DENVER, COLORADO 80225, OR RESTON, VIRGINIA 22092
A FOLDER DESCRIBING TOPOGRAPHIC MAPS AND SYMBOLS IS AVAILABLE ON REQUEST

Map photinspected 1973
No major culture or drainage changes observed

ROAD CLASSIFICATION
Light-duty ——— Unimproved dirt - - - - -



LAKE PILLSBURY, CALIF.
NW/4 LAKE PILLSBURY 15' QUADRANGLE
39122-D8-TF-024

1967
PHOTOINSPECTED 1973
DMA 1452 IV NW-SERIES V895

